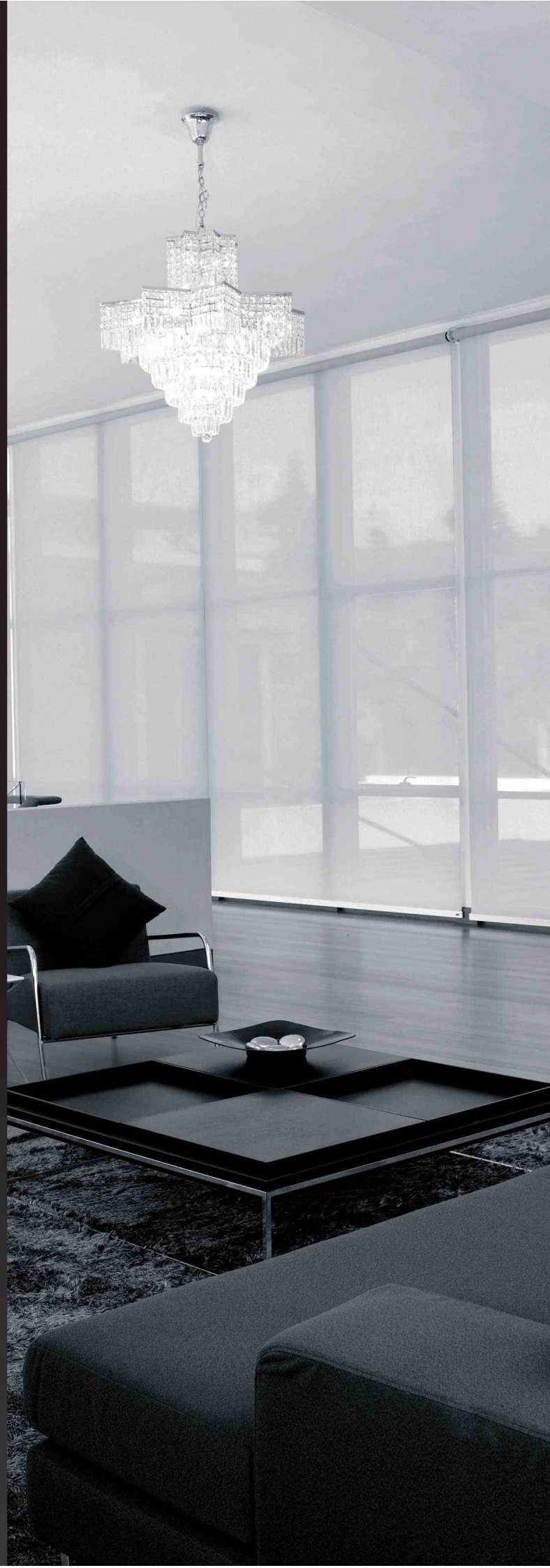


# HanDe®



## Company Introduction



Aerial view

**HanDe** was specialized in sunscreen fabric manufacturing since 2005. We believe stable quality come from stable environment control, HanDe is the first company in China who adopted full air conditioner control in his factory. For a long time, our company committed to provide high-quality, beautiful, stable and environmentally friendly products to our customers.

The factory is located in Guangzhou economic district with 65K m<sup>2</sup> land occupied, the equipment including warping, weaving and heat setting is all imported from Germany and production area is air conditioned and dust controlled. We passed SGS ISO 9001 Quality Management System in 2008, SGS ISO 14001 Environment Management System in 2004 and SGS OHSAS 18001 Occupational Health and Safety Assessment Series Management System in 2007. Besides this management certification, all our fabrics have been thoroughly tested and meet the strictest standards to obtain GREENGUARD GOLD Certification as well as the European Oeko-Tex Standard 100. Our new environmental friendly vinyl coating compound offers minimal V.O.C. emissions; along with our anti-fungal and anti-bacterial properties.

The brand: Sunesse fabrics are woven to the highest standard in the industry and stable quality level regarding flatness, surface appearance, color variance and defects control.





Developed two tone fabric, fiberglass sunscreen, silver backing sunscreen and digital printing sunscreen.

2017.Aug



Renewed ISO 9001 Quality Management System and ISO 14001 Environment Management System.

2016.Jun

Obtained Oeko Tex Standard 100 Certification and renewed GreenGuard Certification in USA

2015.Sep



Developed New brand called Sunesse, with slogan of "Sunscreen Finesse".

2015.Aug

HDMC was acquired by Sununion Group from Hunter Douglas, and name changed as HanDe Manufacturing China.

2015.Mar



Obtained ISO 9001 Quality Management System, ISO 14001 Environment Management System and OHSAS 18001 Occupational Health and Safety Assessment Series Management System.

2007.Aug



Sunscreen factory build up with full air conditioner control of production environment, which is the first company who adopt full environment control in sunscreen industry.

2007.Jun



HanDe Manufacturing China established in Guangzhou by Hunter Douglas which is called as Hunter Douglas Manufacturing China (HDMC).

2005.Dec



## Product Feature

### 1. High standard

- More than 50% rolls with no defects
- Better flatness after Welding
- Straight cutting edge, save cutting process when fabrication Colorfastness test on the highest level

### 2. Stable quality

- Stable quality on flatness control
- Little color difference between batches
- Strict fabric appearance control

### 3. Environmental Friendly and Safety

- Golden Green Guard certification
- Passed Oeko-Tex Standard 100
- Fire retardant certificate for China, UK, US
- 99.9% reduction on bacteria
- No contain irritating smell

### 4. Energy saving and Visual Comfort

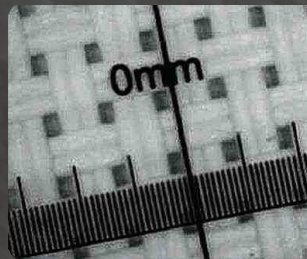
- Effective in reducing glare compare with other brand Thermal and Optical light reflection and absorption on a high level



Eco powered by solar panel



Coated yarn roundness measurement



Uniformity of openness



Screen Comparison

Tencent 腾讯

美的 Midea

Sheraton  
HOTELS & RESORTS

MC  
MATCHER  
名成智能窗饰

创明 Wintom

国贸集团  
MODERN CAPITAL GROUP

KINGFA

WESTIN  
HOTELS & RESORTS

台湾台塑集团

中国华能  
CHINA HUANENG

Baidu 百度

HUAWEI

HanDe®  
SUNESSE®  
Sunscreen Finesse  
By HanDe





# Fabric Selector

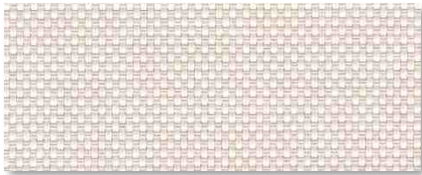
FABRIC SELECTOR



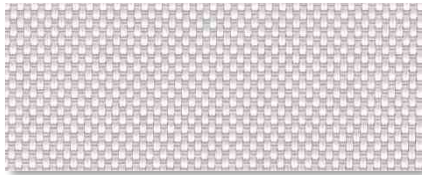




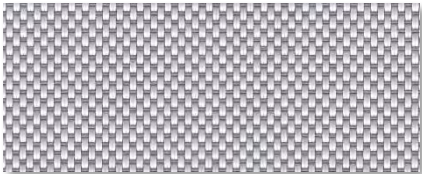
WHITE / WHITE



WHITE / LINEN



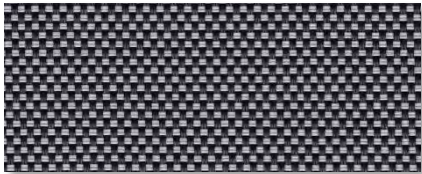
WHITE / PEARL



WHITE / GREY



WHITE / SAND



BLACK / PEARL



BLACK / BLACK

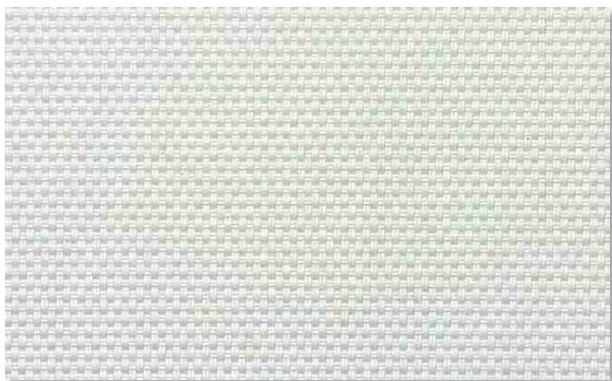


BLACK / GREY

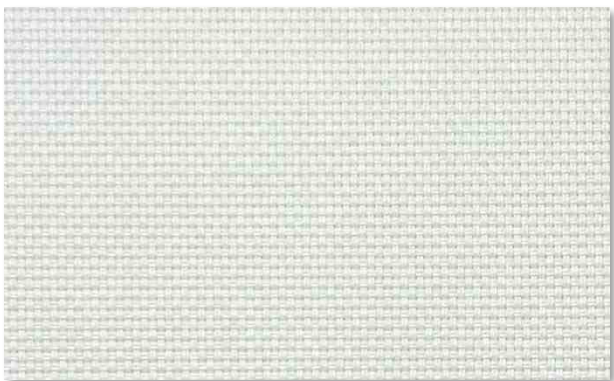


BLACK / BROWN

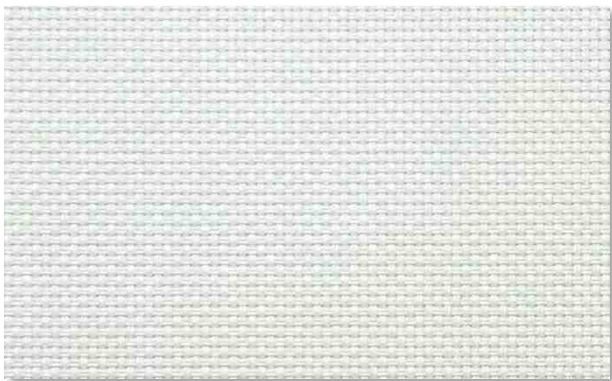
\* Colors may be slightly different from the actual ones



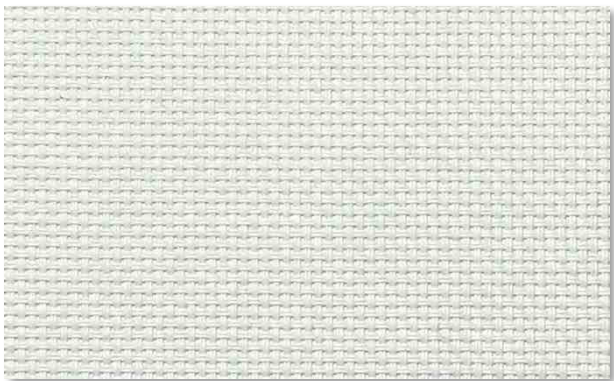
1% OPENNESS



3% OPENNESS



5% OPENNESS



10% OPENNESS

## Specifications

OPENNESS:	<b>Aprox 1%</b>	FIRE CLASSIFICATION	NFPA 701, B1-DIN4102, B1-GB17591
COMPOSITION:	25%Polyester, 75% PVC		BS 5867 TypeB Part2
MAX FABRIC WIDTH:	300cm	HEALTH & SAFETY	Oeko-tex 100, Greenguard® Gold
ROLL LENGTH:	30m		RoHS Directive (EU)2015/863, EN71 Part 3
FABRIC WEIGHT:	482g ± 5%	BACTERIAL RESISTANCE	ASTM G21, ASTM E 2180
FABRIC THICKNESS:	0.72mm ± 5%	COLOUR FASTNESS TO LIGHT	Grade 8 ISO105 B02, ≥4.0 AATCC 16

Color	Fabric Properties					Fabric & Glass		Recommended Comfort Classification				
	Thermal		Optical			SHGC % Improvement	SHGC	Thermal Control	Visual			
	Ts	Rs	As	Rv	Tv				Daylight Utilization	Glare Control	Night Privacy	Outward Visibility
0101 White*White	16	72	12	74	13	56%	0.21	2	2	1	2	1
0102 White*Linen	17	65	18	68	13	53%	0.23	2	2	1	2	1
0103 White*Pearl	17	60	23	62	14	47%	0.24	2	2	1	2	1
0105 White*Grey	8	45	47	50	5	40%	0.25	2	1	2	2	1
0107 White*Sand	12	55	33	59	8	46%	0.23	2	1	2	2	1
0403 Black*Pearl	0	11	89	12	0	18%	0.34	2	0	3	3	1
0404 Black*Black	0	3	97	3	0	13%	0.36	1	0	3	3	1
0405 Black*Grey	0	8	92	8	0	16%	0.35	1	0	3	3	1
0406 Black*Brown	1	5	94	5	1	14%	0.35	1	0	3	3	1

OPENNESS:	<b>Aprox 3%</b>	FIRE CLASSIFICATION	NFPA 701, B1-DIN4102, B1-GB17591
COMPOSITION:	25%Polyester, 75% PVC		BS 5867 TypeB Part2
MAX FABRIC WIDTH:	300cm	HEALTH & SAFETY	Oeko-tex 100, Greenguard® Gold
ROLL LENGTH:	30m		RoHS Directive (EU)2015/863, EN71 Part 3
FABRIC WEIGHT:	465g ± 5%	BACTERIAL RESISTANCE	ASTM G21, ASTM E 2180
FABRIC THICKNESS:	0.65mm ± 5%	COLOUR FASTNESS TO LIGHT	Grade 8 ISO105 B02, ≥4.0 AATCC 16

Color	Fabric Properties					Fabric & Glass		Recommended Comfort Classification				
	Thermal		Optical			SHGC % Improvement	SHGC	Thermal Control	Visual			
	Ts	Rs	As	Rv	Tv				Daylight Utilization	Glare Control	Night Privacy	Outward Visibility
0101 White*White	18	70	12	72	15	54%	0.23	2	2	1	2	1
0102 White*Linen	15	59	26	63	11	48%	0.24	2	2	1	2	1
0103 White*Pearl	14	52	34	57	11	44%	0.25	2	2	1	2	1
0105 White*Grey	9	40	51	44	7	36%	0.27	2	1	1	2	1
0107 White*Sand	14	51	35	54	10	42%	0.26	2	1	1	2	1
0403 Black*Pearl	4	13	83	15	4	19%	0.34	2	1	3	2	2
0404 Black*Black	3	3	94	3	3	13%	0.37	1	1	3	2	2
0405 Black*Grey	3	9	88	10	3	16%	0.35	1	1	3	2	2
0406 Black*Brown	3	6	91	6	3	14%	0.36	1	1	3	2	2



Specifications

OPENNESS:	Aprox 5%	FIRE CLASSIFICATION	NFPA 701, B1-DIN4102, B1-GB17591
COMPOSITION:	25%Polyester, 75% PVC		BS 5867 TypeB Part2
MAX FABRIC WIDTH:	300cm	HEALTH & SAFETY	Oeko-tex 100, Greenguard® Gold
ROLL LENGTH:	30m		RoHS Directive (EU)2015/863, EN71 Part 3
FABRIC WEIGHT:	420g ± 5%	BACTERIAL RESISTANCE	ASTM G21, ASTM E 2180
FABRIC THICKNESS:	0.62mm ± 5%	COLOUR FASTNESS TO LIGHT	Grade 8 ISO105 B02, ≥4.0 AATCC 16

Color	Fabric Properties					Fabric & Glass		Recommended Comfort Classification				
	Thermal		Optical			SHGC % Improvement	SHGC	Thermal Control	Visual			
	Ts	Rs	As	Rv	Tv				Daylight Utilization	Glare Control	Night Privacy	Outward Visibility
0101 White*White	21	67	12	69	17	51%	0.25	2	2	0	1	1
0102 White*Linen	18	56	26	60	14	46%	0.25	2	2	0	1	1
0103 White*Pearl	16	49	35	54	13	41%	0.27	2	2	0	1	2
0105 White*Grey	12	38	50	40	9	33%	0.30	2	1	0	1	2
0107 White*Sand	14	46	40	50	12	40%	0.28	2	1	0	1	2
0403 Black*Pearl	8	15	77	17	8	19%	0.35	1	1	1	1	3
0404 Black*Black	6	3	91	3	3	11%	0.37	1	1	1	1	3
0405 Black*Grey	7	3	90	3	7	12%	0.38	1	1	1	1	3
0406 Black*Brown	7	6	87	6	7	14%	0.38	1	1	1	1	3

OPENNESS:	Aprox 10%	FIRE CLASSIFICATION	NFPA 701, B1-DIN4102, B1-GB17591
COMPOSITION:	25%Polyester, 75% PVC		BS 5867 TypeB Part2
MAX FABRIC WIDTH:	300cm	HEALTH & SAFETY	Oeko-tex 100, Greenguard® Gold
ROLL LENGTH:	30m		RoHS Directive (EU)2015/863, EN71 Part 3
FABRIC WEIGHT:	380g ± 5%	BACTERIAL RESISTANCE	ASTM G21, ASTM E 2180
FABRIC THICKNESS:	0.58mm ± 5%	COLOUR FASTNESS TO LIGHT	Grade 8 ISO105 B02, ≥4.0 AATCC 16

Color	Fabric Properties					Fabric & Glass		Recommended Comfort Classification				
	Thermal		Optical			SHGC % Improvement	SHGC	Thermal Control	Visual			
	Ts	Rs	As	Rv	Tv				Daylight Utilization	Glare Control	Night Privacy	Outward Visibility
0101 White*White	21	61	18	60	17	45%	0.26	2	2	0	0	2
0102 White*Linen	18	56	26	60	14	45%	0.26	2	2	0	1	2
0103 White*Pearl	16	49	35	54	13	41%	0.27	2	2	0	1	2
0105 White*Grey	18	36	46	38	15	31%	0.33	2	2	0	1	3
0107 White*Sand	18	48	34	23	12	40%	0.30	2	2	0	1	3
0403 Black*Pearl	12	17	71	19	10	18%	0.35	1	1	1	1	3
0404 Black*Black	10	3	87	3	6	10%	0.37	1	1	1	1	3
0405 Black*Grey	11	4	85	5	10	11%	0.38	1	1	1	1	3
0406 Black*Brown	11	5	84	8	10	13%	0.38	1	1	1	1	3

Ts (Solar transmittance): Proportion of solar energy transmitted through the fabric.

Rs (Solar reflectance): Proportion of solar radiation reflected by the fabric.

As (Solar absorptance): Proportion of solar radiation absorbed by the fabric.

Tv (Visible light transmittance): Total percentage of light radiation through the fabric over a wavelength of 380 to 780 nm.

Rv (visible light reflectance): Total percentage of light radiation reflected by the fabric over a wavelength of 380 to 780 nm.

SHGC (Total solar factor): Solar energy which actually penetrates into a room through the blind and glazing. A low value means good thermal performance.

Comfort Classification According to EN14501 :

0. Very little effect

1. Little effect

2. Moderate effect

3. Good effect

4. Very good effect



# Horizon Basket

1%-3%-5%-10% Openness

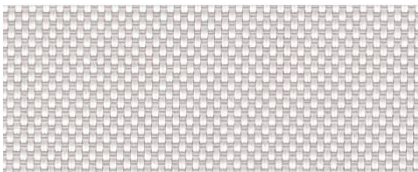
FABRIC SELECTOR



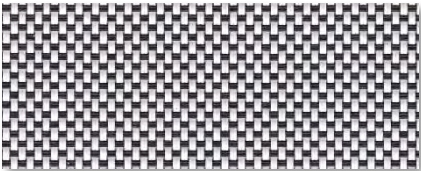
WHITE / WHITE



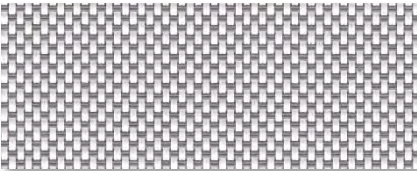
WHITE / LINEN



WHITE / PEARL



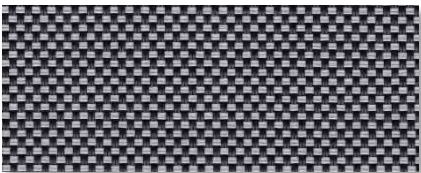
WHITE / BLACK



WHITE / GREY



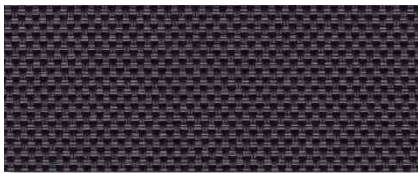
WHITE / SAND



BLACK / PEARL

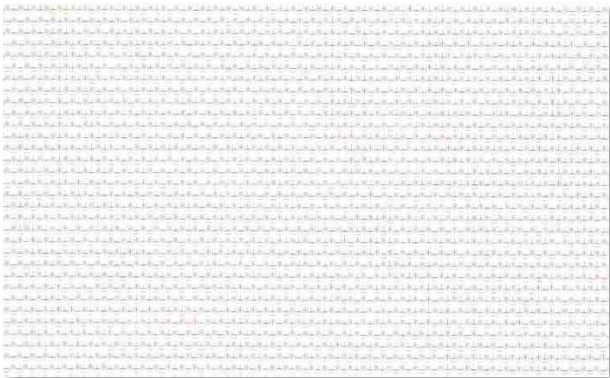


BLACK / BLACK

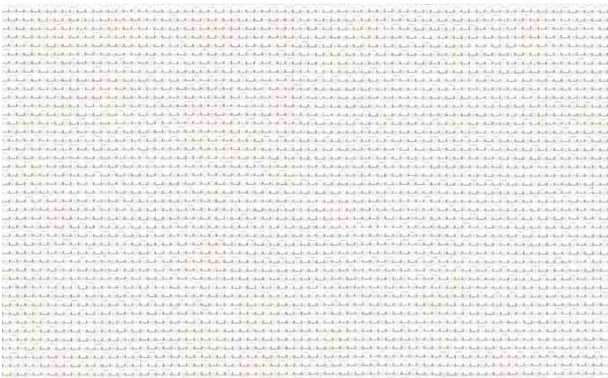


BLACK / BROWN

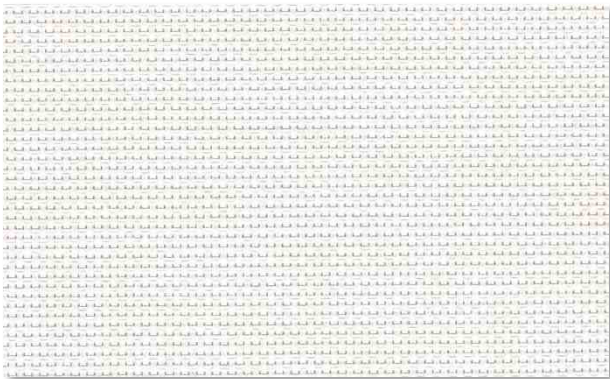
\* Colors may be slightly different from the actual ones



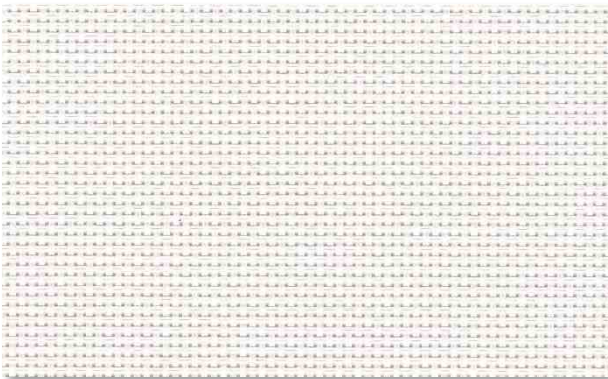
1% OPENNESS



3% OPENNESS



5% OPENNESS



10% OPENNESS

## Specifications

OPENNESS:	<b>Aprox 1%</b>
COMPOSITION:	22%Polyester, 78% PVC
MAX FABRIC WIDTH:	300cm
ROLL LENGTH:	30m
FABRIC WEIGHT:	495g ± 5%
FABRIC THICKNESS:	0.72mm ± 5%

FIRE CLASSIFICATION	NFPA 701, B1-DIN4102, B1-GB17591
	BS 5867 TypeB Part2
HEALTH & SAFETY	Oeko-tex 100, Greenguard® Gold
	RoHS Directive (EU)2015/863, EN71 Part 3
BACTERIAL RESISTANCE	ASTM G21, ASTM E 2180
COLOUR FASTNESS TO LIGHT	Grade 8 ISO105 B02, ≥4.0 AATCC 16

Color	Fabric Properties					Fabric & Glass		Recommended Comfort Classification				
	Thermal		Optical			SHGC % Improvement	SHGC	Thermal Control	Visual			
	Ts	Rs	As	Rv	Tv				Daylight Utilization	Glare Control	Night Privacy	Outward Visibility
0101 White*White	15	72	13	74	13	56%	0.21	2	2	1	2	1
0102 White*Linen	17	65	18	68	13	53%	0.23	2	2	1	2	1
0103 White*Pearl	17	60	23	62	14	47%	0.24	2	2	1	2	1
0104 White*Black	3	25	72	35	3	40%	0.28	2	1	2	2	1
0105 White*Grey	8	45	47	50	5	40%	0.25	2	1	2	2	1
0107 White*Sand	12	55	33	59	8	46%	0.23	2	1	2	2	1
0403 Black*Pearl	0	10	89	12	0	18%	0.34	2	0	3	3	1
0404 Black*Black	0	3	97	3	0	13%	0.36	1	0	3	3	1
0406 Black*Brown	1	5	94	5	1	14%	0.35	1	0	3	3	1

OPENNESS:	<b>Aprox 3%</b>
COMPOSITION:	22%Polyester, 78% PVC
MAX FABRIC WIDTH:	300cm
ROLL LENGTH:	30m
FABRIC WEIGHT:	485g ± 5%
FABRIC THICKNESS:	0.70mm ± 5%

FIRE CLASSIFICATION	NFPA 701, B1-DIN4102, B1-GB17591
	BS 5867 TypeB Part2
HEALTH & SAFETY	Oeko-tex 100, Greenguard® Gold
	RoHS Directive (EU)2015/863, EN71 Part 3
BACTERIAL RESISTANCE	ASTM G21, ASTM E 2180
COLOUR FASTNESS TO LIGHT	Grade 8 ISO105 B02, ≥4.0 AATCC 16

Color	Fabric Properties					Fabric & Glass		Recommended Comfort Classification				
	Thermal		Optical			SHGC % Improvement	SHGC	Thermal Control	Visual			
	Ts	Rs	As	Rv	Tv				Daylight Utilization	Glare Control	Night Privacy	Outward Visibility
0101 White*White	17	71	12	74	24	46%	0.26	2	2	1	2	1
0102 White*Linen	20	66	14	74	16	48%	0.25	2	2	1	2	1
0103 White*Pearl	15	58	27	66	12	46%	0.26	2	2	1	2	1
0104 White*Black	8	26	66	40	7	40%	0.29	2	1	1	2	1
0105 White*Grey	9	49	42	55	7	44%	0.27	2	1	1	2	1
0107 White*Sand	18	59	23	62	13	46%	0.26	2	1	1	2	1
0403 Black*Pearl	6	14	80	15	6	38%	0.30	2	1	3	2	2
0404 Black*Black	5	3	92	3	5	35%	0.31	1	1	3	2	2
0406 Black*Brown	6	8	86	7	5	38%	0.30	1	1	3	2	2



Horizon Basket

5%-10% Openness

Specifications

OPENNESS:	Aprox 5%	FIRE CLASSIFICATION	NFPA 701, B1-DIN4102, B1-GB17591
COMPOSITION:	22%Polyester, 78% PVC		BS 5867 TypeB Part2
MAX FABRIC WIDTH:	300cm	HEALTH & SAFETY	Oeko-tex 100, Greenguard® Gold
ROLL LENGTH:	30m		RoHS Directive (EU)2015/863, EN71 Part 3
FABRIC WEIGHT:	460g ± 5%	BACTERIAL RESISTANCE	ASTM G21, ASTM E 2180
FABRIC THICKNESS:	0.64mm ± 5%	COLOUR FASTNESS TO LIGHT	Grade 8 ISO105 B02, ≥4.0 AATCC 16

Color	Fabric Properties					Fabric & Glass		Recommended Comfort Classification				
	Thermal		Optical			SHGC % Improvement	SHGC	Thermal Control	Visual			
	Ts	Rs	As	Rv	Tv				Daylight Utilization	Glare Control	Night Privacy	Outward Visibility
0101 White*White	19	72	9	80	15	48%	0.25	2	2	0	1	1
0102 White*Linen	22	63	15	71	18	48%	0.25	2	2	0	1	1
0103 White*Pearl	18	57	25	65	15	46%	0.26	2	2	0	1	2
0104 White*Black	12	27	61	45	11	40%	0.29	2	1	0	1	2
0105 White*Grey	12	44	44	51	10	44%	0.27	2	1	0	1	2
0107 White*Sand	20	59	21	63	16	46%	0.26	2	1	0	1	2
0403 Black*Pearl	10	14	76	17	10	38%	0.30	1	1	1	1	3
0404 Black*Black	7	3	90	3	7	35%	0.31	1	1	1	1	3
0406 Black*Brown	8	5	87	6	8	35%	0.31	1	1	1	1	3

OPENNESS:	Aprox 10%	FIRE CLASSIFICATION	NFPA 701, B1-DIN4102, B1-GB17591
COMPOSITION:	22%Polyester, 78% PVC		BS 5867 TypeB Part2
MAX FABRIC WIDTH:	300cm	HEALTH & SAFETY	Oeko-tex 100, Greenguard® Gold
ROLL LENGTH:	30m		RoHS Directive (EU)2015/863, EN71 Part 3
FABRIC WEIGHT:	410g ± 5%	BACTERIAL RESISTANCE	ASTM G21, ASTM E 2180
FABRIC THICKNESS:	0.60mm ± 5%	COLOUR FASTNESS TO LIGHT	Grade 8 ISO105 B02, ≥4.0 AATCC 16

Color	Fabric Properties					Fabric & Glass		Recommended Comfort Classification				
	Thermal		Optical			SHGC % Improvement	SHGC	Thermal Control	Visual			
	Ts	Rs	As	Rv	Tv				Daylight Utilization	Glare Control	Night Privacy	Outward Visibility
0101 White*White	23	66	11	75	19	48%	0.25	2	2	0	0	2
0102 White*Linen	25	60	15	68	21	46%	0.26	2	2	0	1	2
0103 White*Pearl	24	52	24	60	21	46%	0.26	2	2	0	1	2
0104 White*Black	19	23	58	47	18	40%	0.29	2	2	0	1	3
0105 White*Grey	18	43	39	50	15	44%	0.27	2	2	0	1	3
0107 White*Sand	26	55	19	60	21	46%	0.26	2	2	0	1	3
0403 Black*Pearl	16	14	70	17	15	38%	0.30	1	1	1	1	3
0404 Black*Black	13	3	84	3	13	35%	0.31	1	1	1	1	3
0406 Black*Brown	14	7	79	6	13	38%	0.30	1	1	1	1	3

Ts (Solar transmittance): Proportion of solar energy transmitted through the fabric.

Rs (Solar reflectance): Proportion of solar radiation reflected by the fabric.

As (Solar absorptance): Proportion of solar radiation absorbed by the fabric.

Tv (Visible light transmittance): Total percentage of light radiation through the fabric over a wavelength of 380 to 780 nm.

Rv (visible light reflectance): Total percentage of light radiation reflected by the fabric over a wavelength of 380 to 780 nm.

SHGC (Total solar factor): Solar energy which actually penetrates into a room through the blind and glazing. A low value means good thermal performance.

Comfort Classification According to EN14501 :

0. Very little effect

1. Little effect

2. Moderate effect

3. Good effect

4. Very good effect



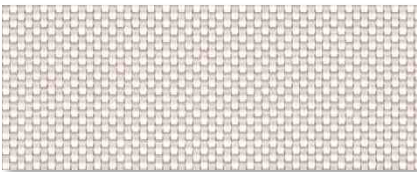
Mario

1%-3%-5%-10% Openness

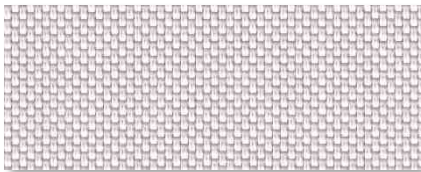
FABRIC SELECTOR



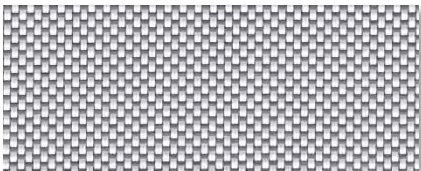
WHITE / WHITE



WHITE / LINEN



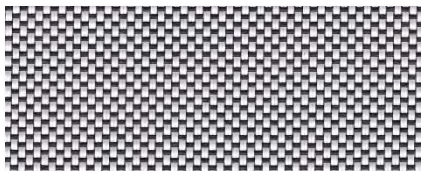
WHITE / PEARL



WHITE / GREY

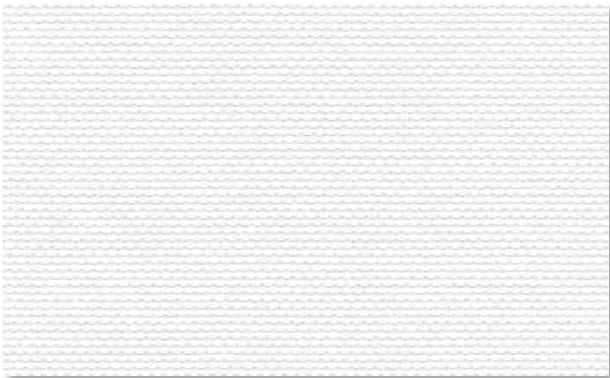


WHITE / SAND

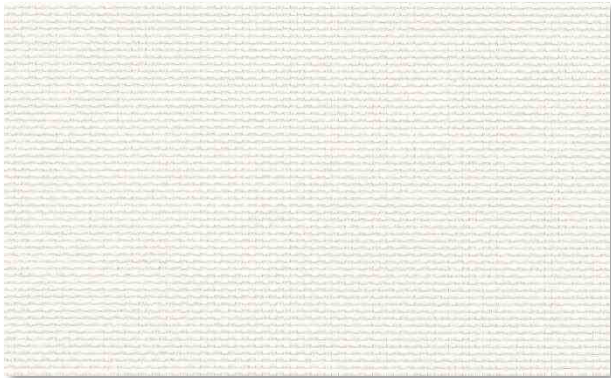


WHITE / BLACK

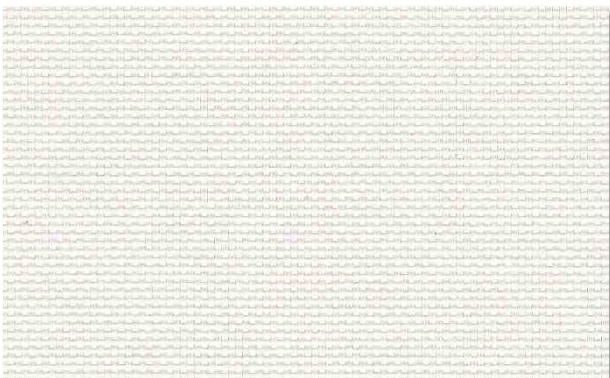
\* Colors may be slightly different from the actual ones



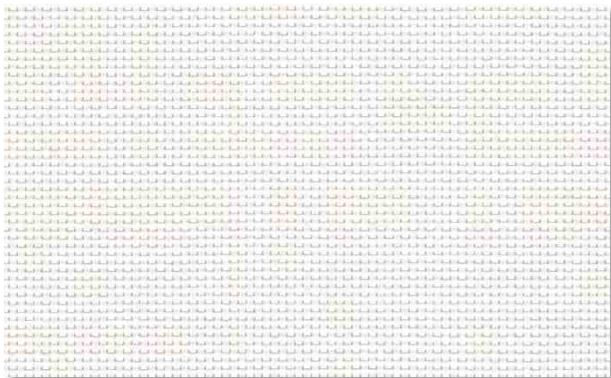
1% OPENNESS



3% OPENNESS



5% OPENNESS



10% OPENNESS

# Specifications

OPENNESS:	<b>Aprox 1%</b>	FIRE CLASSIFICATION	NFPA 701, B1-DIN4102, B2-GB17591
COMPOSITION:	24%Polyester, 76% PVC	HEALTH & SAFETY	Oeko-tex 100, Greenguard® Gold RoHS Directive (EU)2015/863, EN71 Part 3
MAX FABRIC WIDTH:	300cm	COLOUR FASTNESS TO LIGHT	Grade 6 ISO105 B02, ≥4.0 AATCC 16
ROLL LENGTH:	30m		
FABRIC WEIGHT:	540g ± 5%		
FABRIC THICKNESS:	0.69mm ± 5%		

OPENNESS:	<b>Aprox 3%</b>	FIRE CLASSIFICATION	NFPA 701, B1-DIN4102, B2-GB17591
COMPOSITION:	24%Polyester, 76% PVC	HEALTH & SAFETY	Oeko-tex 100, Greenguard® Gold RoHS Directive (EU)2015/863, EN71 Part 3
MAX FABRIC WIDTH:	300cm	COLOUR FASTNESS TO LIGHT	Grade 6 ISO105 B02, ≥4.0 AATCC 16
ROLL LENGTH:	30m		
FABRIC WEIGHT:	485g ± 5%		
FABRIC THICKNESS:	0.56mm ± 5%		

OPENNESS:	<b>Aprox 5%</b>	FIRE CLASSIFICATION	NFPA 701, B1-DIN4102, B2-GB17591
COMPOSITION:	24%Polyester, 76% PVC	HEALTH & SAFETY	Oeko-tex 100, Greenguard® Gold RoHS Directive (EU)2015/863, EN71 Part 3
MAX FABRIC WIDTH:	300cm	COLOUR FASTNESS TO LIGHT	Grade 6 ISO105 B02, ≥4.0 AATCC 16
ROLL LENGTH:	30m		
FABRIC WEIGHT:	460g ± 5%		
FABRIC THICKNESS:	0.56mm ± 5%		

OPENNESS:	<b>Aprox 10%</b>	FIRE CLASSIFICATION	NFPA 701, B1-DIN4102, B2-GB17591
COMPOSITION:	24%Polyester, 76% PVC	HEALTH & SAFETY	Oeko-tex 100, Greenguard® Gold RoHS Directive (EU)2015/863, EN71 Part 3
MAX FABRIC WIDTH:	300cm	COLOUR FASTNESS TO LIGHT	Grade 6 ISO105 B02, ≥4.0 AATCC 16
ROLL LENGTH:	30m		
FABRIC WEIGHT:	413g ± 5%		
FABRIC THICKNESS:	0.56mm ± 5%		



Nova Twill

1%-3% Openness

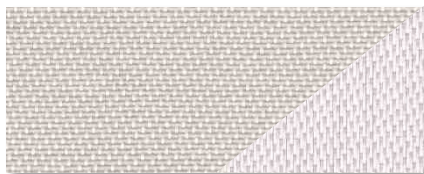
FABRIC SELECTOR



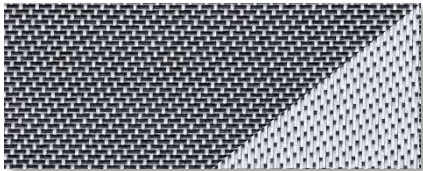
WHITE / WHITE



WHITE / LINEN



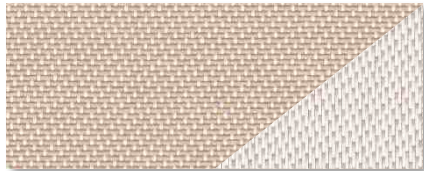
WHITE / PEARL



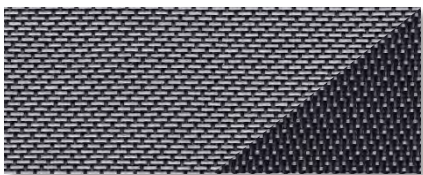
WHITE / BLACK



WHITE / GREY



WHITE / SAND



BLACK / PEARL



BLACK / BLACK

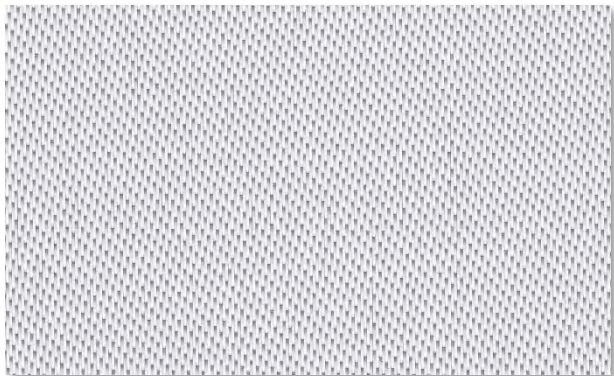


BLACK / BROWN

\* Colors may be slightly different from the actual ones



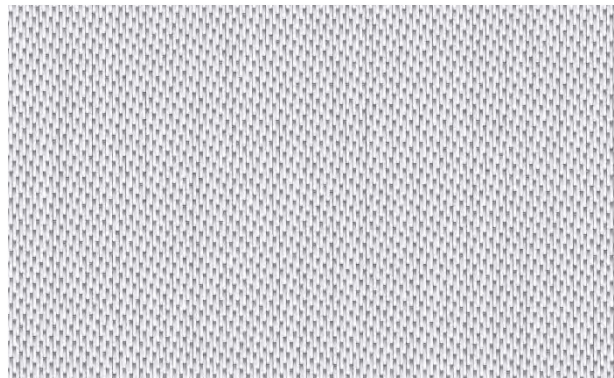
1% OPENNESS FACE



1% OPENNESS BACK



3% OPENNESS FACE



3% OPENNESS BACK

Specifications

OPENNESS:	Aprox 1%	FIRE CLASSIFICATION	NFPA 701, B1-DIN4102, B1-GB17591
COMPOSITION:	25%Polyester, 75% PVC		BS 5867 TypeB Part2
MAX FABRIC WIDTH:	300cm	HEALTH & SAFETY	Oeko-tex 100, Greenguard® Gold
ROLL LENGTH:	30m		RoHS Directive (EU)2015/863, EN71 Part 3
FABRIC WEIGHT:	450g ± 5%	BACTERIAL RESISTANCE	ASTM G21, ASTM E 2180
FABRIC THICKNESS:	0.65mm ± 5%	COLOUR FASTNESS TO LIGHT	Grade 8 ISO105 B02, ≥4.0 AATCC 16

Color	Side	Fabric Properties					Fabric & Glass		Recommended Comfort Classification				
		Thermal			Optical		SHGC % Improvement	SHGC	Thermal Control	Visual			
		Ts	Rs	As	Rv	Tv				Daylight Utilization	Glare Control	Night Privacy	Outward Visibility
0101 White*White	A	17	66	17	73	14	55%	0.22	2	2	1	2	0
0102 White*Linen	A	15	63	22	68	11	52%	0.22	2	2	1	2	1
	B	15	57	28	60	11	46%	0.24					
0103 White*Pearl	A	15	57	28	60	11	46%	0.24	2	2	1	2	1
	B	14	60	26	66	11	51%	0.22					
0104 White*Black	A	7	47	46	47	6	42%	0.27	2	1	3	2	2
	B	9	22	69	32	8	30%	0.29					
0105 White*Grey	A	11	54	35	60	7	47%	0.23	2	1	2	2	1
	B	11	36	53	38	7	33%	0.29					
0107 White*Sand	A	14	60	26	65	10	50%	0.22	2	1	2	2	1
	B	14	49	37	50	10	40%	0.26					
0403 Black*Pearl	A	0	6	94	6	0	15%	0.35	1	1	3	3	1
	B	0	16	84	18	0	21%	0.32					
0404 Black*Black	A	0	3	97	3	0	13%	0.36	1	1	3	3	1
0406 Black*Brown	A	0	4	96	4	0	14%	0.36	1	1	3	3	1
	B	0	6	94	6	0	15%	0.35					

Specifications

OPENNESS:	Aprox 3%	FIRE CLASSIFICATION	NFPA 701, B1-DIN4102, B1-GB17591
COMPOSITION:	22%Polyester, 78% PVC		BS 5867 TypeB Part2
MAX FABRIC WIDTH:	300cm	HEALTH & SAFETY	Oeko-tex 100, Greenguard® Gold
ROLL LENGTH:	30m		RoHS Directive (EU)2015/863, EN71 Part 3
FABRIC WEIGHT:	430g ± 5%	BACTERIAL RESISTANCE	ASTM G21, ASTM E 2180
FABRIC THICKNESS:	0.63mm ± 5%	COLOUR FASTNESS TO LIGHT	Grade 8 ISO105 B02, ≥4.0 AATCC 16

Color	Side	Fabric Properties					Fabric & Glass		Recommended Comfort Classification				
		Thermal			Optical		SHGC % Improvement	SHGC	Thermal Control	Visual			
		Ts	Rs	As	Rv	Tv				Daylight Utilization	Glare Control	Night Privacy	Outward Visibility
0101 White*White	A	19	64	17	71	16	53%	0.23	2	2	1	2	0
0102 White*Linen	A	19	63	18	67	13	53%	0.23	2	2	1	2	1
	B	17	62	21	59	13	45%	0.25					
0103 White*Pearl	A	17	56	27	64	12	49%	0.24	2	2	1	2	1
	B	15	58	27	53	12	41%	0.27					
0104 White*Black	A	8	43	49	34	7	39%	0.27	2	1	2	2	2
	B	9	20	71	8	8	27%	0.29					
0105 White*Grey	A	15	48	37	57	7	45%	0.24	2	1	1	2	1
	B	11	52	37	36	7	31%	0.30					
0107 White*Sand	A	11	34	55	62	11	48%	0.24	2	2	1	2	1
	B	15	58	27	48	11	38%	0.28					
0403 Black*Pearl	A	15	47	38	7	2	15%	0.36	1	1	2	2	1
	B	2	6	92	20	2	22%	0.32					
0404 Black*Black	A	2	17	81	3	2	13%	0.37	1	1	2	2	1
0406 Black*Brown	A	2	4	94	4	2	14%	0.36	1	1	2	2	1
	B	2	7	91	7	2	15%	0.36					

Ts (Solar transmittance): Proportion of solar energy transmitted through the fabric.

Rs (Solar reflectance): Proportion of solar radiation reflected by the fabric.

As (Solar absorptance): Proportion of solar radiation absorbed by the fabric.

Tv (Visible light transmittance): Total percentage of light radiation through the fabric over a wavelength of 380 to 780 nm.

Rv (visible light reflectance): Total percentage of light radiation reflected by the fabric over a wavelength of 380 to 780 nm.

SHGC (Total solar factor): Solar energy which actually penetrates into a room through the blind and glazing. A low value means good thermal performance.

Comfort Classification According to EN14501 :

0. Very little effect

1. Little effect

2. Moderate effect

3. Good effect

4. Very good effect

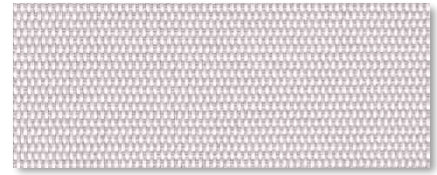




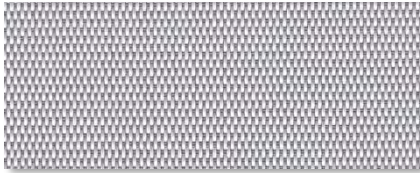
WHITE / WHITE



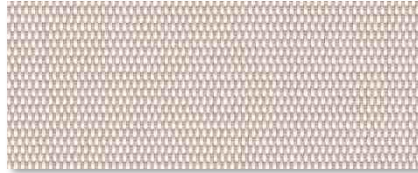
WHITE / LINEN



WHITE / PEARL



WHITE / GREY



WHITE / SAND

\* Colors may be slightly different from the actual ones

## Specifications

OPENNESS:	<b>Aprox 3%</b>
COMPOSITION:	25%Polyester, 75% PVC
MAX FABRIC WIDTH:	300cm
ROLL LENGTH:	30m
FABRIC WEIGHT:	485g ± 5%
FABRIC THICKNESS:	0.70mm ± 5%

FIRE CLASSIFICATION	NFPA 701, B1-DIN4102, B1-GB17591
HEALTH & SAFETY	BS 5867 TypeB Part2 * Colors may be slightly different from the actual ones Oeko-tex 100, Greenguard® Gold
BACTERIAL RESISTANCE	RoHS Directive (EU)2015/863, EN71 Part 3
COLOUR FASTNESS TO LIGHT	ASTM G21, ASTM E 2180 Grade 8 ISO105 B02, ≥4.0 AATCC 16

Color	Fabric Properties					Fabric & Glass		Recommended Comfort Classification				
	Thermal		Optical			SHGC % Improvement	SHGC	Thermal Control	Visual			
	Ts	Rs	As	Rv	Tv				Daylight Utilization	Glare Control	Night Privacy	Outward Visibility
0101 White*White	16	65	19	72	13	55%	0.21	2	2	1	2	0
0102 White*Linen	15	59	26	63	11	49%	0.23	2	2	1	2	0
0103 White*Pearl	13	52	35	58	10	45%	0.25	2	2	1	2	0
0105 White*Grey	9	42	49	47	6	38%	0.26	2	2	1	2	1
0107 White*Sand	13	52	35	55	9	43%	0.25	2	2	1	2	0

Ts (Solar transmittance): Proportion of solar energy transmitted through the fabric.

Rs (Solar reflectance): Proportion of solar radiation reflected by the fabric.

As (Solar absorptance): Proportion of solar radiation absorbed by the fabric.

Tv (Visible light transmittance): Total percentage of light radiation through the fabric over a wavelength of 380 to 780 nm.

Rv (visible light reflectance): Total percentage of light radiation reflected by the fabric over a wavelength of 380 to 780 nm.

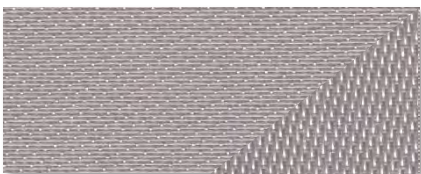
SHGC (Total solar factor): Solar energy which actually penetrates into a room through the blind and glazing. A low value means good thermal performance.

Comfort Classification According to EN14501 :

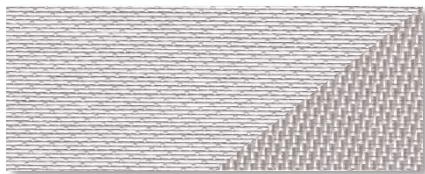
0. Very little effect      1. Little effect      2. Moderate effect      3. Good effect      4. Very good effect



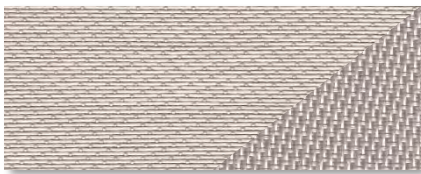
BASKET SILVERY



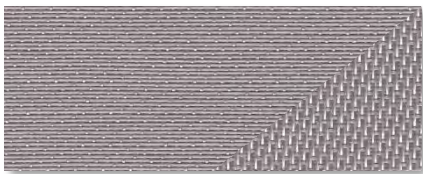
TWILL SILVERY



SILVERY / WHITE



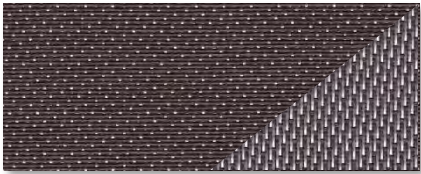
SILVERY / LINEN



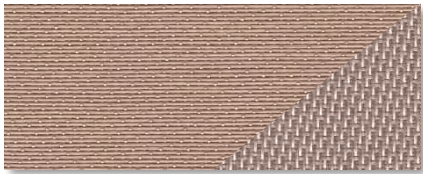
SILVERY / GREY



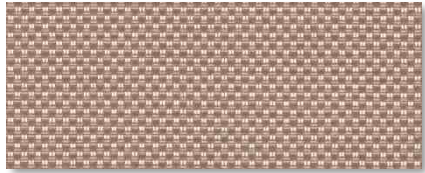
SILVERY / BLACK



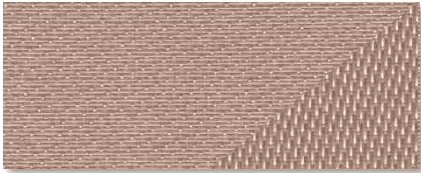
SILVERY / BROWN



SILVERY / SAND



BASKET BRIGHT GOLD



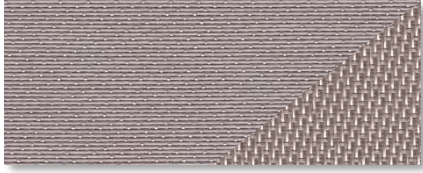
TWILL BRIGHT GOLD



BRIGHT GOLD / WHITE



BRIGHT GOLD / LINEN



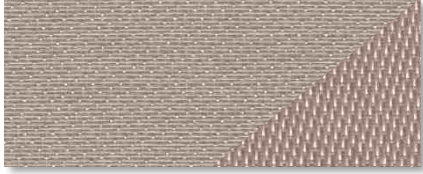
BRIGHT GOLD / GREY



BRIGHT GOLD / WHITE



BRIGHT GOLD / LINEN



BRIGHT GOLD / GREY

\* Colors may be slightly different from the actual ones

## Specifications

OPENNESS:	<b>Aprox 3% - Basket</b>
COMPOSITION:	25%Polyester, 75% PVC
MAX FABRIC WIDTH:	300cm
ROLL LENGTH:	30m
FABRIC WEIGHT:	450g ± 5%
FABRIC THICKNESS:	0.63mm ± 5%

FIRE CLASSIFICATION	NFPA 701, B1-DIN4102, B1-GB17591
	BS 5867 TypeB Part2
HEALTH & SAFETY	Oeko-tex 100, Greenguard® Gold
	RoHS Directive (EU)2015/863, EN71 Part 3
BACTERIAL RESISTANCE	ASTM G21, ASTM E 2180
COLOUR FASTNESS TO LIGHT	Grade 8 ISO105 B02, ≥4.0 AATCC 16

Color	Fabric Properties					Fabric & Glass		Recommended Comfort Classification				
	Thermal			Optical		SHGC % Improvement	SHGC	Thermal Control	Visual			
	Ts	Rs	As	Rv	Tv				Daylight Utilization	Glare Control	Night Privacy	Outward Visibility
0341 Bright Gold	29	26	45	24	27	21%	0.30	2	2	1	1	1
0342 SILVERY	29	25	46	24	28	21%	0.29	2	2	1	1	1

OPENNESS:	<b>Aprox 3% - Twill</b>
COMPOSITION:	25%Polyester, 75% PVC
MAX FABRIC WIDTH:	300cm
ROLL LENGTH:	30m
FABRIC WEIGHT:	480g ± 5%
FABRIC THICKNESS:	0.68mm ± 5%

FIRE CLASSIFICATION	NFPA 701, B1-DIN4102, B1-GB17591
	BS 5867 TypeB Part2
HEALTH & SAFETY	Oeko-tex 100, Greenguard® Gold
	RoHS Directive (EU)2015/863, EN71 Part 3
BACTERIAL RESISTANCE	ASTM G21, ASTM E 2180
COLOUR FASTNESS TO LIGHT	Grade 8 ISO105 B02, ≥4.0 AATCC 16

Color	Side	Fabric Properties					Fabric & Glass		Recommended Comfort Classification				
		Thermal			Optical		SHGC % Improvement	SHGC	Thermal Control	Visual			
		Ts	Rs	As	Rv	Tv				Daylight Utilization	Glare Control	Night Privacy	Outward Visibility
0343 Silvery*White	A	20	29	51	55	18	50%	0.15	3	2	1	2	1
	B	21	37	42	43	19	49%	0.15					
0345 Silvery*Grey	A	15	54	31	30	13	40%	0.18	3	1	1	2	1
	B	16	51	33	33	14	40%	0.18					
0346 Silvery*Black	A	22	10	68	10	12	14%	0.23	2	1	2	2	2
	B	7	10	83	10	7	16%	0.26					

Ts (Solar transmittance): Proportion of solar energy transmitted through the fabric.

Rs (Solar reflectance): Proportion of solar radiation reflected by the fabric.

As (Solar absorptance): Proportion of solar radiation absorbed by the fabric.

Tv (Visible light transmittance): Total percentage of light radiation through the fabric over a wavelength of 380 to 780 nm.

Rv (visible light reflectance): Total percentage of light radiation reflected by the fabric over a wavelength of 380 to 780 nm.

SHGC (Total solar factor): Solar energy which actually penetrates into a room through the blind and glazing. A low value means good thermal performance.

Comfort Classification According to EN14501 :

0. Very little effect

1. Little effect

2. Moderate effect

3. Good effect

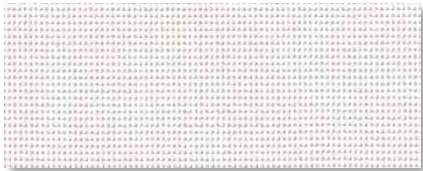
4. Very good effect



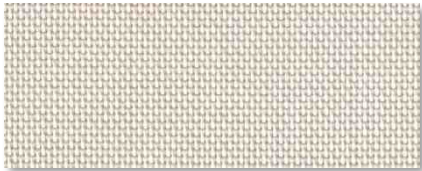
FABRIC SELECTOR

SheerScreen

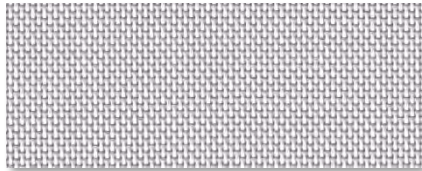
12% Openness



WHITE / WHITE



WHITE / LINEN



WHITE / GREY

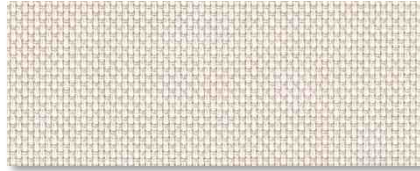
\* Colors may be slightly different from the actual ones

## Specifications

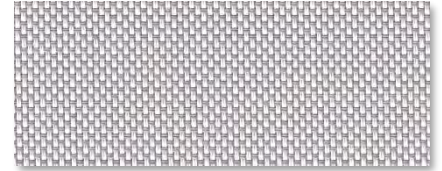
OPENNESS:	Aprox 12%	FIRE CLASSIFICATION	NFPA 701, B1-DIN4102, B2-GB17591
COMPOSITION:	24%Polyester, 76% PVC	HEALTH & SAFETY	Oeko-tex 100, Greenguard® Gold
MAX FABRIC WIDTH:	300cm		RoHS Directive (EU)2015/863, EN71 Part 3
ROLL LENGTH:	30m	BACTERIAL RESISTANCE	
FABRIC WEIGHT:	340g ± 5%	COLOUR FASTNESS TO LIGHT	Grade 6 ISO105 B02, ≥4.0 AATCC 16
FABRIC THICKNESS:	0.48mm ± 5%		



WHITE / WHITE



WHITE / LINEN



WHITE / GREY

\* Colors may be slightly different from the actual ones

## Specifications

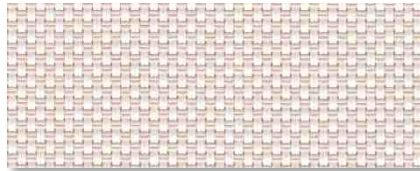
OPENNESS:	<b>Aprox 3%</b>
COMPOSITION:	30%Polyester, 70% PVC
MAX FABRIC WIDTH:	300cm
ROLL LENGTH:	30m
FABRIC WEIGHT:	317g ± 5%
FABRIC THICKNESS:	0.42mm ± 5%

FIRE CLASSIFICATION	NFPA 701, B1-DIN4102, B1-GB17591 BS 5867 TypeB Part2
HEALTH & SAFETY	Oeko-tex 100, Greenguard® Gold RoHS Directive (EU)2015/863, EN71 Part 3
BACTERIAL RESISTANCE	ASTM G21, ASTM E 2180
COLOUR FASTNESS TO LIGHT	Grade 8 ISO105 B02, ≥4.0 AATCC 16

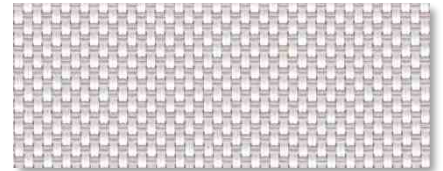
# External Basket | 3%-5% Openness



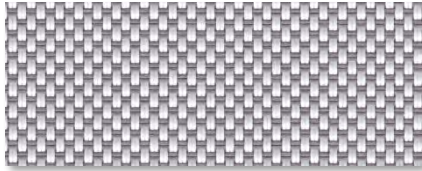
WHITE / WHITE



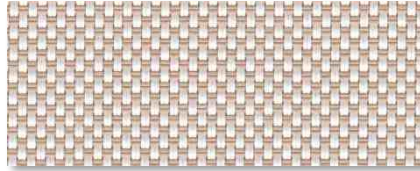
WHITE / LINEN



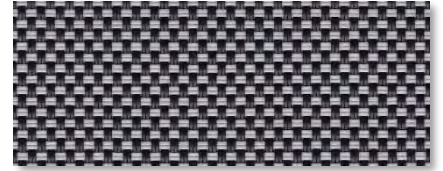
WHITE / PEARL



WHITE / GREY



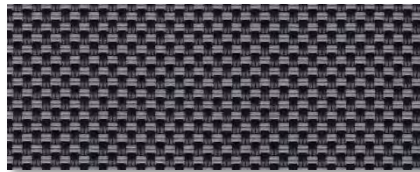
WHITE / SAND



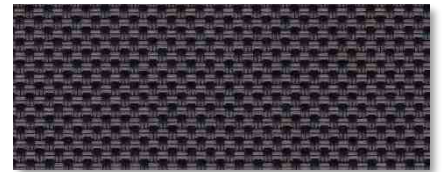
BLACK / PEARL



BLACK / BLACK



BLACK / GREY



BLACK / BROWN

\* Colors may be slightly different from the actual ones



3% OPENNESS



5% OPENNESS



Specifications

OPENNESS:	Aprox 3%	FIRE CLASSIFICATION	NFPA 701, B1-DIN4102, B1-GB17591
COMPOSITION:	26%Polyester, 74% PVC		BS 5867 TypeB Part2
MAX FABRIC WIDTH:	300cm	HEALTH & SAFETY	Oeko-tex 100, Greenguard® Gold
ROLL LENGTH:	30m		RoHS Directive (EU)2015/863, EN71 Part 3
FABRIC WEIGHT:	570g ± 5%	BACTERIAL RESISTANCE	ASTM G21, ASTM E 2180
FABRIC THICKNESS:	0.80mm ± 5%	COLOUR FASTNESS TO LIGHT	Grade 8 ISO105 B02, ≥4.0 AATCC 16

Color	Fabric Properties					Fabric & Glass		Recommended Comfort Classification				
	Thermal		Optical			SHGC % Improvement	SHGC	Thermal Control	Visual			
	Ts	Rs	As	Rv	Tv				Daylight Utilization	Glare Control	Night Privacy	Outward Visibility
0101 White*White	17	67	16	73	14	55%	0.22	2	2	1	2	1
0102 White*Linen	14	59	27	63	11	48%	0.23	2	2	1	2	1
0103 White*Pearl	13	52	35	57	10	44%	0.25	2	2	1	2	1
0105 White*Grey	9	41	50	45	7	36%	0.27	2	1	1	2	2
0107 White*Sand	13	52	35	54	10	42%	0.25	2	2	1	2	1
0403 Black*Pearl	6	15	79	17	5	20%	0.34	2	1	3	2	2
0404 Black*Black	5	3	92	3	5	13%	0.38	1	1	3	2	2
0405 Black*Grey	5	10	85	10	5	16%	0.36	1	1	3	2	2
0406 Black*Brown	5	6	89	6	5	14%	0.37	1	1	3	2	2

OPENNESS:	Aprox 5%	FIRE CLASSIFICATION	NFPA 701, B1-DIN4102, B1-GB17591
COMPOSITION:	26%Polyester, 74% PVC		BS 5867 TypeB Part2
MAX FABRIC WIDTH:	300cm	HEALTH & SAFETY	Oeko-tex 100, Greenguard® Gold
ROLL LENGTH:	30m		RoHS Directive (EU)2015/863, EN71 Part 3
FABRIC WEIGHT:	545g ± 5%	BACTERIAL RESISTANCE	ASTM G21, ASTM E 2180
FABRIC THICKNESS:	0.75mm ± 5%	COLOUR FASTNESS TO LIGHT	Grade 8 ISO105 B02, ≥4.0 AATCC 16

Color	Fabric Properties					Fabric & Glass		Recommended Comfort Classification				
	Thermal		Optical			SHGC % Improvement	SHGC	Thermal Control	Visual			
	Ts	Rs	As	Rv	Tv				Daylight Utilization	Glare Control	Night Privacy	Outward Visibility
0101 White*White	23	66	11	72	20	54%	0.25	2	2	0	1	1
0102 White*Linen	16	58	26	61	13	46%	0.24	2	2	0	1	1
0103 White*Pearl	15	50	35	55	12	42%	0.26	2	2	0	1	2
0105 White*Grey	11	39	50	42	9	34%	0.28	2	2	0	1	2
0107 White*Sand	14	49	37	51	11	40%	0.27	2	2	0	1	2
0403 Black*Pearl	8	16	76	18	8	20%	0.35	1	1	1	1	3
0404 Black*Black	7	3	90	3	7	13%	0.38	1	1	1	1	3
0405 Black*Grey	6	11	83	10	6	16%	0.36	1	1	1	1	3
0406 Black*Brown	7	6	87	6	7	14%	0.37	1	1	1	1	3

Ts (Solar transmittance): Proportion of solar energy transmitted through the fabric.

Rs (Solar reflectance): Proportion of solar radiation reflected by the fabric.

As (Solar absorptance): Proportion of solar radiation absorbed by the fabric.

Tv (Visible light transmittance): Total percentage of light radiation through the fabric over a wavelength of 380 to 780 nm.

Rv (visible light reflectance): Total percentage of light radiation reflected by the fabric over a wavelength of 380 to 780 nm.

SHGC (Total solar factor): Solar energy which actually penetrates into a room through the blind and glazing. A low value means good thermal performance.

Comfort Classification According to EN14501 :

0. Very little effect

1. Little effect

2. Moderate effect

3. Good effect

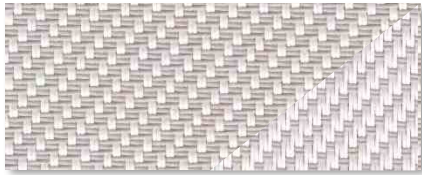
4. Very good effect



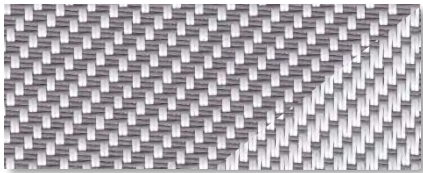
WHITE / WHITE



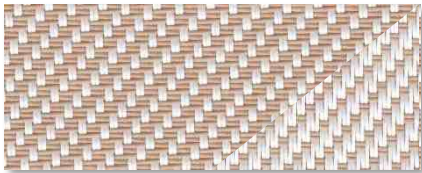
WHITE / LINEN



WHITE / PEARL



WHITE / GREY



WHITE / SAND

\* Colors may be slightly different from the actual ones

Specifications

OPENNESS:	Aprox 3%	FIRE CLASSIFICATION	NFPA 701, B1-DIN4102, B1-GB17591
COMPOSITION:	26% Polyester, 74% PVC		BS 5867 TypeB Part2
MAX FABRIC WIDTH:	300cm	HEALTH & SAFETY	Oeko-tex 100, Greenguard® Gold
ROLL LENGTH:	30m		RoHS Directive (EU)2015/863, EN71 Part 3
FABRIC WEIGHT:	590g ± 5%	BACTERIAL RESISTANCE	ASTM G21, ASTM E 2180
FABRIC THICKNESS:	0.86mm ± 5%	COLOUR FASTNESS TO LIGHT	Grade 8 ISO105 B02, ≥4.0 AATCC 16

Color	Side	Fabric Properties					Fabric & Glass		Recommended Comfort Classification				
		Thermal		Optical			SHGC % Improvement	SHGC	Thermal Control	Visual			
		Ts	Rs	As	Rv	Tv				Daylight Utilization	Glare Control	Night Privacy	Outward Visibility
0101 White*White	A	20	68	12	73	14	55%	0.20	1	2	0	1	1
0102 White*Linen	A	12	62	26	67	9	51%	0.21	1	2	0	1	1
	B	12	58	30	60	9	47%	0.23					
0103 White*Pearl	A	10	56	34	62	8	48%	0.22	1	2	1	2	2
	B	10	49	41	53	8	42%	0.25					
0104 White*Black	A	7	47	46	51	5	41%	0.24	1	1	1	2	2
	B	7	35	58	37	5	32%	0.28					
0105 White*Grey	A	10	56	34	58	7	46%	0.23	1	2	1	2	2
	B	10	48	42	48	7	39%	0.26					
0107 White*Sand	A	20	68	12	73	14	55%	0.20	1	2	0	1	1
	A	12	62	26	67	9	51%	0.21					



Ts (Solar transmittance): Proportion of solar energy transmitted through the fabric.

Rs (Solar reflectance): Proportion of solar radiation reflected by the fabric.

As (Solar absorptance): Proportion of solar radiation absorbed by the fabric.

Tv (Visible light transmittance): Total percentage of light radiation through the fabric over a wavelength of 380 to 780 nm.

Rv (visible light reflectance): Total percentage of light radiation reflected by the fabric over a wavelength of 380 to 780 nm.

SHGC (Total solar factor): Solar energy which actually penetrates into a room through the blind and glazing. A low value means good thermal performance.

Comfort Classification According to EN14501 :

0. Very little effect

1. Little effect

2. Moderate effect

3. Good effect

4. Very good effect



## Specifications

Color	Side	Fabric Properties					Fabric & Glass		Recommended Comfort Classification				
		Thermal			Optical		SHGC % Improvement	SHGC	Thermal Control	Visual			
		Ts	Rs	As	Rv	Tv			Daylight Utilization	Glare Control	Night Privacy	Outward Visibility	
0101 White*White	A	70	19	11	21	69	57%	0.23	2	2	2	3	2
	B	18	64	18	71	14							
0102 White*Linen	A	70	18	12	20	69	47%	0.25	2	2	2	3	2
	B	13	52	35	55	8							
0313 White*White &Linen	A	70	19	11	21	69	52%	0.24	2	2	2	3	2
	B	15	59	26	64	11							
0105 White*White &Grey	A	70	15	15	16	68	44%	0.26	2	2	2	3	2
	B	9	46	45	50	6							

Ts (Solar transmittance): Proportion of solar energy transmitted through the fabric.

Rs (Solar reflectance): Proportion of solar radiation reflected by the fabric.

As (Solar absorptance): Proportion of solar radiation absorbed by the fabric.

Tv (Visible light transmittance): Total percentage of light radiation through the fabric over a wavelength of 380 to 780 nm.

Rv (visible light reflectance): Total percentage of light radiation reflected by the fabric over a wavelength of 380 to 780 nm.

SHGC (Total solar factor): Solar energy which actually penetrates into a room through the blind and glazing. A low value means good thermal performance.

Comfort Classification According to EN14501 :

0. Very little effect

1. Little effect

2. Moderate effect

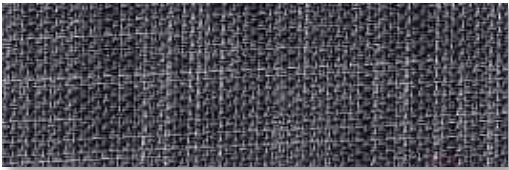
3. Good effect

4. Very good effect





Bronze



GREY

\* Colors may be slightly different from the actual ones

Specifications

OPENNESS:	Aprox 5%
COMPOSITION:	35%Polyester, 65% PVC
MAX FABRIC WIDTH:	300cm
ROLL LENGTH:	30m
FABRIC WEIGHT:	395g ± 5%
FABRIC THICKNESS:	0.64mm ± 5%

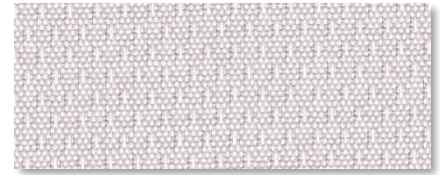
FIRE CLASSIFICATION	NFPA 701, B1-DIN4102, B1-GB17591 BS 5867 TypeB Part2
HEALTH & SAFETY	Oeko-tex 100, Greenguard® Gold RoHS Directive (EU)2015/863, EN71 Part 3
BACTERIAL RESISTANCE	ASTM G21, ASTM E 2180
COLOUR FASTNESS TO LIGHT	Grade 8 ISO105 B02, ≥4.0 AATCC 16



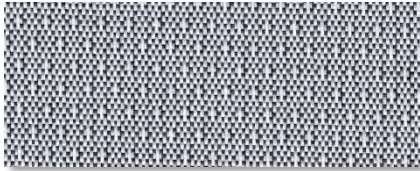
WHITE / WHITE



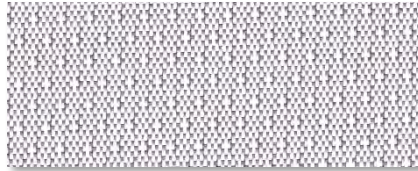
WHITE / LINEN



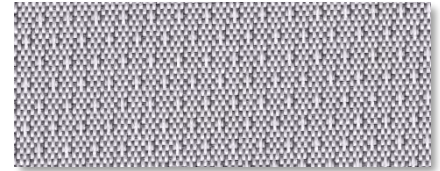
WHITE / PEARL



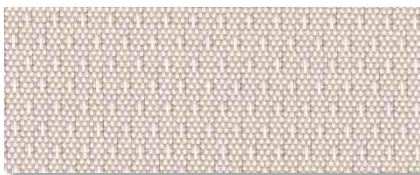
WHITE / BLACK



WHITE / GREY



WHITE / BROWN



WHITE / SAND

\* Colors may be slightly different from the actual ones

## Specifications

OPENNESS:	<b>Aprox 5%</b>
COMPOSITION:	25% Polyester, 75% PVC
MAX FABRIC WIDTH:	300cm
ROLL LENGTH:	30m
FABRIC WEIGHT:	440g ± 5%
FABRIC THICKNESS:	0.77mm ± 5%

FIRE CLASSIFICATION	NFPA 701, B1-DIN4102, B1-GB17591
	BS 5867 TypeB Part2
HEALTH & SAFETY	Oeko-tex 100, Greenguard® Gold
	RoHS Directive (EU)2015/863, EN71 Part 3
BACTERIAL RESISTANCE	ASTM G21, ASTM E 2180
COLOUR FASTNESS TO LIGHT	Grade 8 ISO105 B02, ≥4.0 AATCC 16

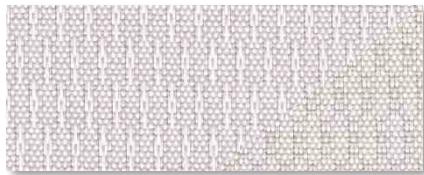
Color	Fabric Properties					Fabric & Glass		Recommended Comfort Classification				
	Thermal		Optical			SHGC % Improvement	SHGC	Thermal Control	Visual			
	Ts	Rs	As	Rv	Tv				Daylight Utilization	Glare Control	Night Privacy	Outward Visibility
0101 White*White	16	65	19	72	12	54%	0.22	2	2	1	1	1
0102 White*Linen	16	59	25	64	12	49%	0.24	2	2	1	1	1
0103 White*Pearl	14	53	33	58	11	45%	0.25	2	2	2	2	2
0104 White*Black	6	29	65	35	5	31%	0.29	2	1	2	2	2
0105 White*Grey	10	42	48	46	7	37%	0.27	2	2	2	2	2
0403 White*Brown	7	35	58	40	5	34%	0.27	2	1	2	2	2
0107 White*Sand	14	52	34	55	10	43%	0.25	2	2	2	2	2



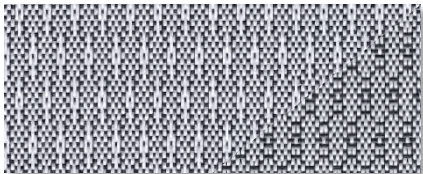
WHITE / WHITE



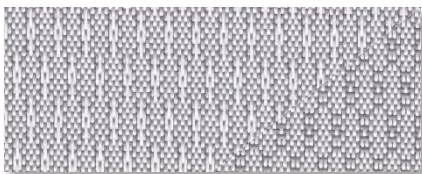
WHITE / LINEN



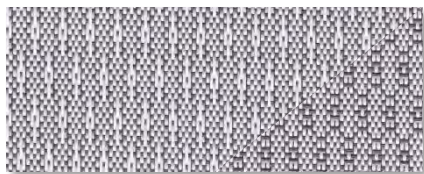
WHITE / PEARL



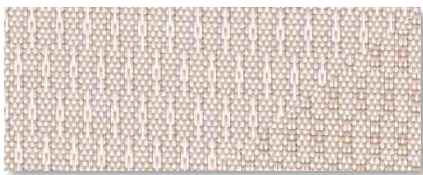
WHITE / BLACK



WHITE / GREY



WHITE / BROWN



WHITE / SAND

\* Colors may be slightly different from the actual ones

Specifications

OPENNESS:	Aprox 3%	FIRE CLASSIFICATION	NFPA 701, B1-DIN4102, B1-GB17591
COMPOSITION:	25% Polyester, 75% PVC		BS 5867 TypeB Part2
MAX FABRIC WIDTH:	300cm	HEALTH & SAFETY	Oeko-tex 100, Greenguard® Gold
ROLL LENGTH:	30m		RoHS Directive (EU)2015/863, EN71 Part 3
FABRIC WEIGHT:	440g ± 5%	BACTERIAL RESISTANCE	ASTM G21, ASTM E 2180
FABRIC THICKNESS:	0.77mm ± 5%	COLOUR FASTNESS TO LIGHT	Grade 8 ISO105 B02, ≥4.0 AATCC 16

Color	Fabric Properties					Fabric & Glass		Recommended Comfort Classification				
	Thermal		Optical			SHGC % Improvement	SHGC	Thermal Control	Visual			
	Ts	Rs	As	Rv	Tv				Daylight Utilization	Glare Control	Night Privacy	Outward Visibility
0101 White*White	19	64	17	71	16	32%	0.24	2	2	1	1	1
0102 White*Linen	17	58	25	62	13	35%	0.24	2	2	1	1	1
0103 White*Pearl	15	52	33	57	12	38%	0.25	2	2	2	2	2
0104 White*Black	7	27	66	32	6	49%	0.29	2	1	2	2	2
0105 White*Grey	11	40	49	44	8	43%	0.27	2	2	2	2	2
0403 White*Brown	9	32	59	37	7	46%	0.28	2	1	2	2	2
0107 White*Sand	15	50	35	53	11	39%	0.26	2	2	2	2	2

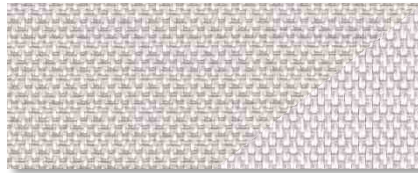




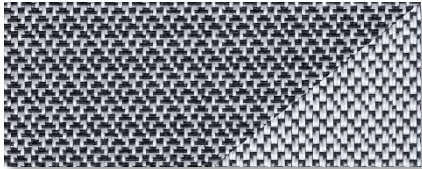
WHITE / WHITE



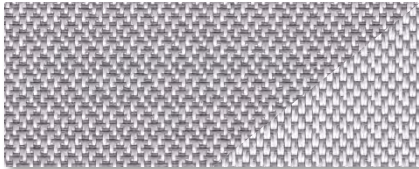
WHITE / LINEN



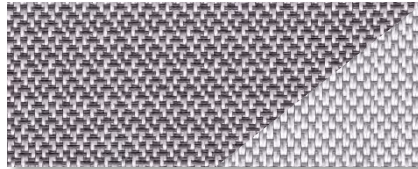
WHITE / PEARL



WHITE / BLACK



WHITE / GREY



WHITE / BROWN



WHITE / SAND

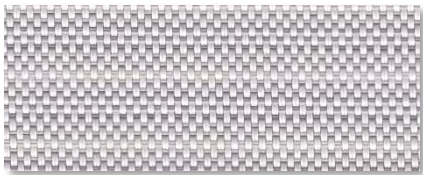
\* Colors may be slightly different from the actual ones

Specifications

OPENNESS:	Aprox 3%
COMPOSITION:	25% Polyester, 75% PVC
MAX FABRIC WIDTH:	300cm
ROLL LENGTH:	30m
FABRIC WEIGHT:	490g ± 5%
FABRIC THICKNESS:	0.76mm ± 5%

FIRE CLASSIFICATION	NFPA 701, B1-DIN4102, B1-GB17591
	BS 5867 TypeB Part2
HEALTH & SAFETY	Oeko-tex 100, Greenguard® Gold
	RoHS Directive (EU)2015/863, EN71 Part 3
BACTERIAL RESISTANCE	ASTM G21, ASTM E 2180
COLOUR FASTNESS TO LIGHT	Grade 8 ISO105 B02, ≥4.0 AATCC 16

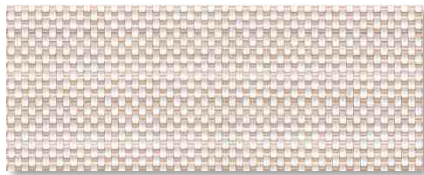
Color	Fabric Properties					Fabric & Glass		Recommended Comfort Classification				
	Thermal		Optical			SHGC % Improvement	SHGC	Thermal Control	Visual			
	Ts	Rs	As	Rv	Tv				Daylight Utilization	Glare Control	Night Privacy	Outward Visibility
0101 White*White	17	65	18	72	14	55%	0.22	2	2	1	1	1
0102 White*Linen	15	60	25	65	11	49%	0.24	2	2	1	1	1
0103 White*Pearl	5	54	41	60	4	47%	0.22	2	2	2	2	2
0104 White*Black	5	34	61	40	4	34%	0.32	2	1	2	2	2
0105 White*Grey	8	45	47	49	6	40%	0.28	2	2	2	2	2
0403 White*Brown	6	38	56	43	4	36%	0.30	2	1	2	2	2
0107 White*Sand	13	54	33	57	9	44%	0.26	2	2	2	2	2



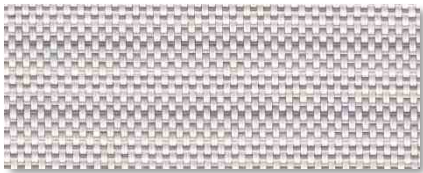
WHITE / PEARL\*GREY



WHITE / WHITE\*LINEN



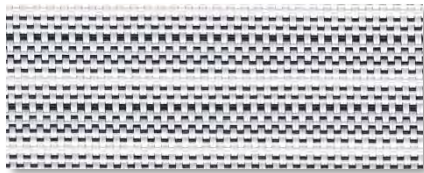
WHITE / LINEN\*SAND



WHITE / LINEN\*GREY



WHITE / WHITE\*SAND



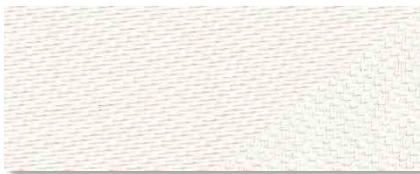
WHITE / WHITE\*BLACK

\* Colors may be slightly different from the actual ones

Specifications

OPENNESS:	Aprox 3%	FIRE CLASSIFICATION	NFPA 701, B1-DIN4102, B1-GB17591
COMPOSITION:	25% Polyester, 75% PVC		BS 5867 TypeB Part2
MAX FABRIC WIDTH:	300cm	HEALTH & SAFETY	Oeko-tex 100, Greenguard® Gold
ROLL LENGTH:	30m		RoHS Directive (EU)2015/863, EN71 Part 3
FABRIC WEIGHT:	475g ± 5%	BACTERIAL RESISTANCE	ASTM G21, ASTM E 2180
FABRIC THICKNESS:	0.67mm ± 5%	COLOUR FASTNESS TO LIGHT	Grade 8 ISO105 B02, ≥4.0 AATCC 16

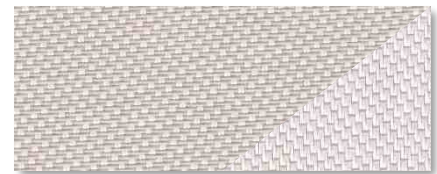
Color	Fabric Properties					Fabric & Glass		Recommended Comfort Classification				
	Thermal		Optical			SHGC % Improvement	SHGC	Thermal Control	Visual			
	Ts	Rs	As	Rv	Tv				Daylight Utilization	Glare Control	Night Privacy	Outward Visibility
0101 White*White	12	46	42	51	9	40%	0.26	2	1	2	1	2
0102 White*Linen	16	62	22	68	13	51%	0.23	2	2	1	1	1
0103 White*Pearl	14	55	31	58	10	45%	0.24	2	2	1	1	1
0104 White*Black	12	49	39	53	8	42%	0.25	2	1	2	1	2
0105 White*Grey	10	43	47	50	9	40%	0.27	2	1	2	1	2
0403 White*Brown	15	58	27	63	12	48%	0.24	2	2	1	1	1
0107 White*Sand	12	46	42	51	9	40%	0.26	2	1	2	1	2



WHITE / WHITE



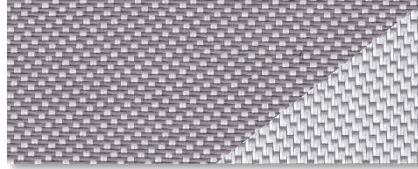
WHITE / LINEN



WHITE / PEARL



WHITE / BLACK



WHITE / GREY



WHITE / BROWN



WHITE / SAND

\* Colors may be slightly different from the actual ones

## Specifications

OPENNESS:	<b>Aprox 3%</b>
COMPOSITION:	25% Polyester, 75% PVC
MAX FABRIC WIDTH:	300cm
ROLL LENGTH:	30m
FABRIC WEIGHT:	480g ± 5%
FABRIC THICKNESS:	0.70mm ± 5%

FIRE CLASSIFICATION	NFPA 701, B1-DIN4102, B1-GB17591
HEALTH & SAFETY	BS 5867 TypeB Part2 Oeko-tex 100, Greenguard® Gold RoHS Directive (EU)2015/863, EN71 Part 3
BACTERIAL RESISTANCE	ASTM G21, ASTM E 2180
COLOUR FASTNESS TO LIGHT	Grade 8 ISO105 B02, ≥4.0 AATCC 16

Color	Side	Fabric Properties					Fabric & Glass		Recommended Comfort Classification				
		Thermal		Optical			SHGC % Improvement	SHGC	Thermal Control	Visual			
		Ts	Rs	As	Rv	Tv				Daylight Utilization	Glare Control	Night Privacy	Outward Visibility
0101 White*White	A	17	67	16	73	14	55%	0.21	2	2	1	2	0
0102 White*Linen	A	13	62	25	67	10	51%	0.21	2	2	1	2	1
	B	13	57	30	59	10	46%	0.24					
0103 White*Pearl	A	12	57	31	63	9	48%	0.23	2	2	1	2	1
	B	12	47	41	51	9	41%	0.26					
0104 White*Black	A	4	37	59	43	3	36%	0.26	2	1	1	2	1
	B	4	15	81	17	3	21%	0.34					
0105 White*Grey	A	15	48	37	57	7	45%	0.24	2	1	1	2	1
	B	11	52	37	36	7	31%	0.30					
0106 White*Bronze	A	5	41	54	46	3	38%	0.25	2	1	1	2	1
	B	5	21	74	22	3	23%	0.32					
0107 White*Sand	A	12	56	32	59	8	46%	0.23	2	2	1	2	1
	B	12	46	42	46	8	37%	0.27					



Ts (Solar transmittance): Proportion of solar energy transmitted through the fabric.

Rs (Solar reflectance): Proportion of solar radiation reflected by the fabric.

As (Solar absorptance): Proportion of solar radiation absorbed by the fabric.

Tv (Visible light transmittance): Total percentage of light radiation through the fabric over a wavelength of 380 to 780 nm.

Rv (visible light reflectance): Total percentage of light radiation reflected by the fabric over a wavelength of 380 to 780 nm.

SHGC (Total solar factor): Solar energy which actually penetrates into a room through the blind and glazing. A low value means good thermal performance.

Comfort Classification According to EN14501 :

0. Very little effect

1. Little effect

2. Moderate effect

3. Good effect

4. Very good effect



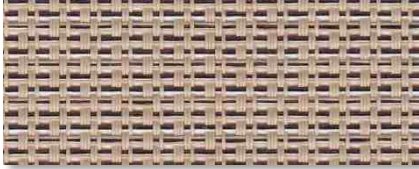
PAPYRUS



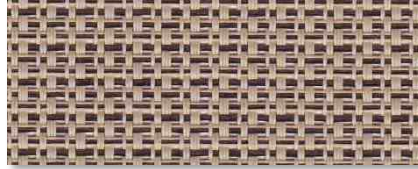
TAPIOCA



SAFARI



CEMENT



OTTER



DUNE

\* Colors may be slightly different from the actual ones

## Specifications

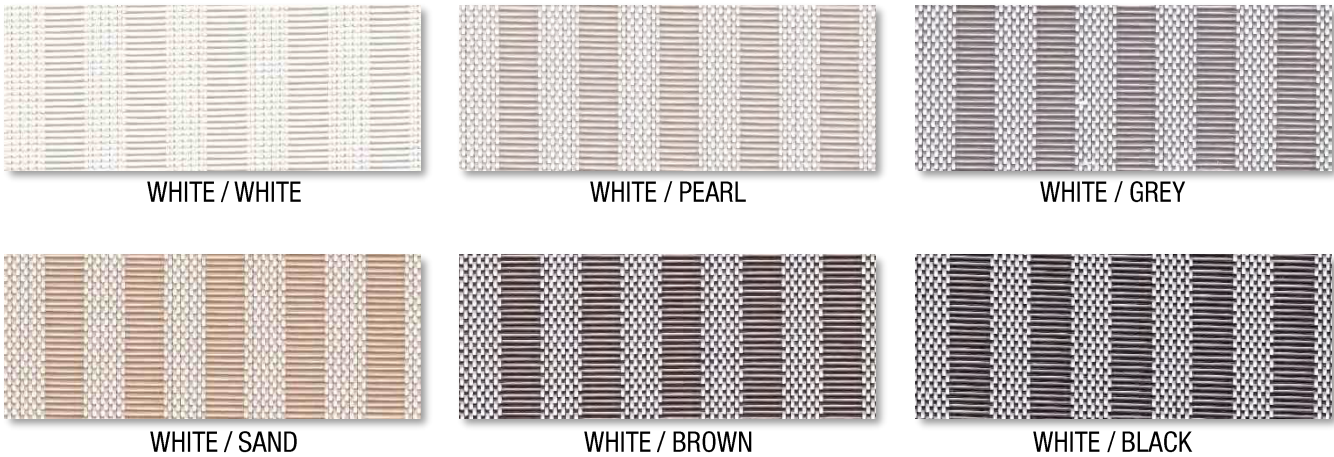
OPENNESS:	<b>Aprox 12%</b>
COMPOSITION:	27% Polyester, 73% PVC
MAX FABRIC WIDTH:	290cm
ROLL LENGTH:	30m
FABRIC WEIGHT:	325g ± 5%
FABRIC THICKNESS:	0.60mm ± 5%

FIRE CLASSIFICATION	NFPA 701, B1-DIN4102, B1-GB17591 BS 5867 TypeB Part2
HEALTH & SAFETY	Oeko-tex 100, Greenguard® Gold RoHS Directive (EU)2015/863, EN71 Part 3
BACTERIAL RESISTANCE	ASTM G21, ASTM E 2180
COLOUR FASTNESS TO LIGHT	Grade 8 ISO105 B02, ≥4.0 AATCC 16

Color	Fabric Properties					Fabric & Glass		Recommended Comfort Classification				
	Thermal		Optical			SHGC % Improvement	SHGC	Thermal Control	Visual			
	Ts	Rs	As	Rv	Tv				Daylight Utilization	Glare Control	Night Privacy	Outward Visibility
0074 Papyrus	32	58	10	65	29	46%	0.26	2	2	2	1	2
0075 Tapioca	26	44	30	51	23	44%	0.27	2	2	2	1	2
0078 Safari	18	36	46	43	13	42%	0.28	2	2	1	1	2
0079 Cement	26	30	44	37	23	42%	0.28	2	2	2	1	2
0080 Otter	18	25	57	32	16	40%	0.29	2	2	1	1	2
0082 Dune	19	24	57	31	16	40%	0.29	2	2	1	1	2
0074 Papyrus	32	58	10	65	29	46%	0.26	2	2	2	1	2

Special – Champlain

25% Openness



\* Colors may be slightly different from the actual ones

Specifications

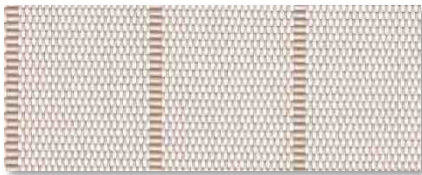
OPENNESS:	Aprox 25%	FIRE CLASSIFICATION	NFPA 701, B1-DIN4102, B1-GB17591
COMPOSITION:	22% Polyester, 78% PVC		BS 5867 TypeB Part2
MAX FABRIC WIDTH:	290cm	HEALTH & SAFETY	Oeko-tex 100, Greenguard® Gold
ROLL LENGTH:	30m		RoHS Directive (EU)2015/863, EN71 Part 3
FABRIC WEIGHT:	285g ± 5%	BACTERIAL RESISTANCE	ASTM G21, ASTM E 2180
FABRIC THICKNESS:	0.52mm ± 5%	COLOUR FASTNESS TO LIGHT	Grade 8 ISO105 B02, ≥4.0 AATCC 16

Color	Fabric Properties					Fabric & Glass		Recommended Comfort Classification				
	Thermal		Optical			SHGC % Improvement	SHGC	Thermal Control	Visual			
	Ts	Rs	As	Rv	Tv				Daylight Utilization	Glare Control	Night Privacy	Outward Visibility
0101 White*White	26	71	3	75	22	48%	0.25	2	2	0	0	3
0103 White*Pearl	24	51	25	58	22	40%	0.29	2	2	0	0	3
0104 White*Black	19	23	58	30	20	40%	0.29	2	2	1	0	3
0105 White*Grey	28	41	31	48	19	44%	0.27	2	2	1	0	3
0106 White*Brown	21	32	47	39	18	42%	0.28	2	2	1	0	3
0107 White*Sand	25	54	21	61	20	46%	0.26	2	2	0	0	3

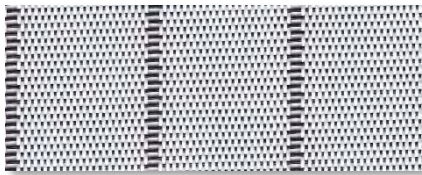




WHITE \ WHITE



WHITE \ SAND



WHITE \ BLACK

\* Colors may be slightly different from the actual ones

Specifications

OPENNESS: **Aprox 5%**  
COMPOSITION: 22% Polyester, 78% PVC  
MAX FABRIC WIDTH: 290cm  
ROLL LENGTH: 30m  
FABRIC WEIGHT: 420g ± 5%  
FABRIC THICKNESS: 0.60mm ± 5%

FIRE CLASSIFICATION NFPA 701, B1-DIN4102, B1-GB17591  
BS 5867 TypeB Part2  
HEALTH & SAFETY Oeko-tex 100, Greenguard® Gold  
RoHS Directive (EU)2015/863, EN71 Part 3  
BACTERIAL RESISTANCE ASTM G21, ASTM E 2180  
COLOUR FASTNESS TO LIGHT Grade 8 ISO105 B02, ≥4.0 AATCC 16

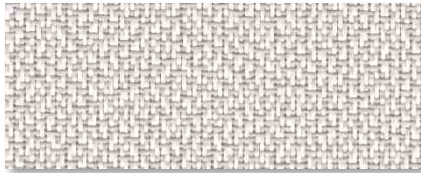
Color	Fabric Properties					Fabric & Glass		Recommended Comfort Classification				
	Thermal		Optical			SHGC % Improvement	SHGC	Thermal Control	Visual			
	Ts	Rs	As	Rv	Tv				Daylight Utilization	Glare Control	Night Privacy	Outward Visibility
0113 White*White	35	50	15	66	33	44%	0.27	2	2	1	1	2
0116 White*Black	21	36	43	41	20	42%	0.28	2	2	1	1	2
0119 White*Sand	33	39	28	55	30	42%	0.28	2	2	1	1	2



WHITE



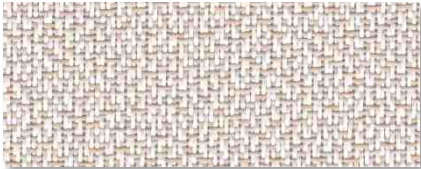
LINEN



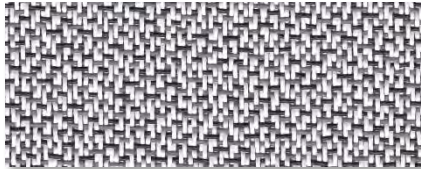
PEARL



SAND



SAND / PEARL



BLACK

\* Colors may be slightly different from the actual ones

Specifications

OPENNESS:	Aprox 9%	FIRE CLASSIFICATION	NFPA 701, B1-DIN4102, B1-GB17591
COMPOSITION:	26% Polyester, 74% PVC		BS 5867 TypeB Part2
MAX FABRIC WIDTH:	300cm	HEALTH & SAFETY	Oeko-tex 100, Greenguard® Gold
ROLL LENGTH:	30m		RoHS Directive (EU)2015/863, EN71 Part 3
FABRIC WEIGHT:	420g ± 5%	BACTERIAL RESISTANCE	ASTM G21, ASTM E 2180
FABRIC THICKNESS:	0.60mm ± 5%	COLOUR FASTNESS TO LIGHT	Grade 8 ISO105 B02, ≥4.0 AATCC 16

Color	Fabric Properties					Fabric & Glass		Recommended Comfort Classification				
	Thermal		Optical			SHGC % Improvement	SHGC	Thermal Control	Visual			
	Ts	Rs	As	Rv	Tv				Daylight Utilization	Glare Control	Night Privacy	Outward Visibility
0030 Linen	19	59	22	66	15	46%	0.26	2	2	2	2	2
0031 Black	10	37	53	43	14	42%	0.28	2	2	3	2	2
0032 Sand*Pearl	17	58	25	62	14	46%	0.26	2	2	2	2	2
0101 White	19	71	10	79	16	48%	0.25	2	2	2	2	2
0103 Pearl	18	56	26	63	15	46%	0.26	2	2	2	2	2
0107 Sand	18	60	22	61	13	46%	0.26	2	2	2	2	2

# Special – Viewscreen

12% Openness



WHITE



BEIGE



BLACK



GREY



BROWN

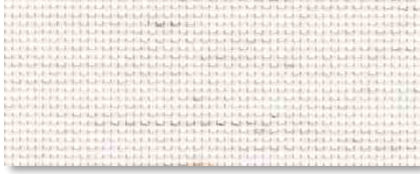
\* Colors may be slightly different from the actual ones

## Specifications

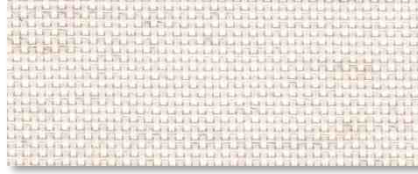
OPENNESS:	<b>Aprox 12%</b>
COMPOSITION:	26% Polyester, 74% PVC
MAX FABRIC WIDTH:	300cm
ROLL LENGTH:	30m
FABRIC WEIGHT:	455g ± 5%
FABRIC THICKNESS:	0.82mm ± 5%

FIRE CLASSIFICATION	NFPA 701, B1-DIN4102, B1-GB17591 BS 5867 TypeB Part2
HEALTH & SAFETY	Oeko-tex 100, Greenguard® Gold RoHS Directive (EU)2015/863, EN71 Part 3
BACTERIAL RESISTANCE	ASTM G21, ASTM E 2180
COLOUR FASTNESS TO LIGHT	Grade 8 ISO105 B02, ≥4.0 AATCC 16

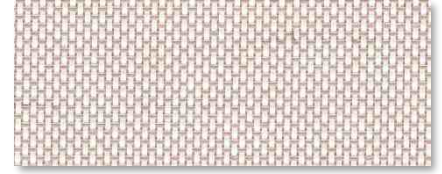
Color	Fabric Properties					Fabric & Glass		Recommended Comfort Classification				
	Thermal		Optical			SHGC % Improvement	SHGC	Thermal Control	Visual			
	Ts	Rs	As	Rv	Tv				Daylight Utilization	Glare Control	Night Privacy	Outward Visibility
0084 White	32	56	12	65	30	46%	0.26	2	2	0	1	2
0085 Beige	32	37	31	43	29	42%	0.28	2	2	0	1	2
0086 Black	18	8	74	10	18	38%	0.30	2	2	1	1	3
0087 Grey	17	13	70	22	17	38%	0.30	2	2	1	1	3
0088 Brown	20	14	66	16	20	38%	0.30	2	2	1	1	3



WHITE / WHITE



WHITE / LINEN



WHITE / SAND



WHITE / PEARL

\* Colors may be slightly different from the actual ones

## Specifications

OPENNESS:	<b>Aprox 5%</b>
COMPOSITION:	30% Polyester, 4% Flax, 66% PVC
MAX FABRIC WIDTH:	300cm
ROLL LENGTH:	30m
FABRIC WEIGHT:	455g ± 5%
FABRIC THICKNESS:	0.82mm ± 5%

FIRE CLASSIFICATION	NFPA 701, B1-DIN4102, B1-GB17591 BS 5867 TypeB Part2
HEALTH & SAFETY	Oeko-tex 100, Greenguard® Gold RoHS Directive (EU)2015/863, EN71 Part 3
BACTERIAL RESISTANCE	ASTM G21, ASTM E 2180
COLOUR FASTNESS TO LIGHT	Grade 8 ISO105 B02, ≥4.0 AATCC 16

Color	Fabric Properties					Fabric & Glass		Recommended Comfort Classification				
	Thermal		Optical			SHGC % Improvement	SHGC	Thermal Control	Visual			
	Ts	Rs	As	Rv	Tv				Daylight Utilization	Glare Control	Night Privacy	Outward Visibility
0185 White*Linen	32	56	12	61	28	46%	0.26	2	2	1	2	1
0187 White*White	34	57	9	63	31	46%	0.26	2	2	1	2	1
0189 White*Sand	29	50	21	53	25	44%	0.27	2	2	2	2	2
0191 White*Pearl	30	52	18	57	26	46%	0.26	2	2	2	2	2



Ts (Solar transmittance): Proportion of solar energy transmitted through the fabric.

Rs (Solar reflectance): Proportion of solar radiation reflected by the fabric.

As (Solar absorptance): Proportion of solar radiation absorbed by the fabric.

Tv (Visible light transmittance): Total percentage of light radiation through the fabric over a wavelength of 380 to 780 nm.

Rv (visible light reflectance): Total percentage of light radiation reflected by the fabric over a wavelength of 380 to 780 nm.

SHGC (Total solar factor): Solar energy which actually penetrates into a room through the blind and glazing. A low value means good thermal performance.

Comfort Classification According to EN14501 :

0. Very little effect

1. Little effect

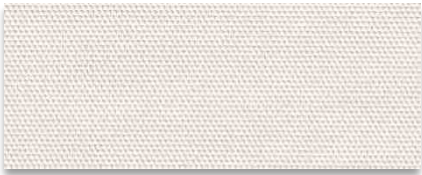
2. Moderate effect

3. Good effect

4. Very good effect



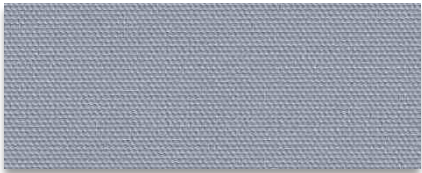
WHITE



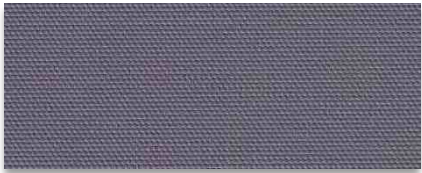
LINEN



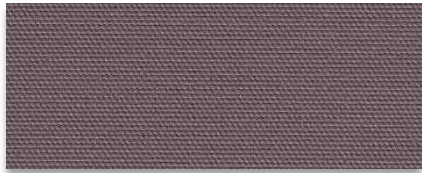
PEARL



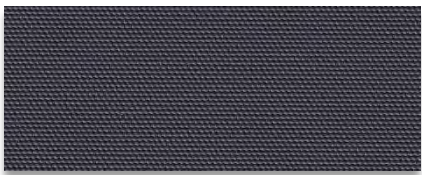
GREY



PEWTER



BRONZE



BLACK

\* Colors may be slightly different from the actual ones

Specifications

OPENNESS:	0%	FIRE CLASSIFICATION	FR (US) - NFPA 701 (By Request)
COMPOSITION:	100% Polyester coated with Acrylic		B1 (CN) - GB17591 (By Request)
MAX FABRIC WIDTH:	300cm	HEALTH & SAFETY	Greenguard® Gold , EN71 Part 3
ROLL LENGTH:	25m		RoHS Directive (EU)2015/863,
FABRIC WEIGHT:	400g ± 5%	BACTERIAL RESISTANCE	ASTM G21, ASTM E 2180
FABRIC THICKNESS:	0.48mm ± 5%	COLOUR FASTNESS TO LIGHT	Grade 6 ISO105 B02, ≥4.0 AATCC 16

Color	Fabric Properties					Fabric & Glass		Recommended Comfort Classification				
	Thermal			Optical		SHGC % Improvement	SHGC	Thermal Control	Visual			
	Ts	Rs	As	Rv	Tv				Daylight Utilization	Glare Control	Night Privacy	Outward Visibility
White ( Foam Back )	0	75	25	91	0	58%	0.07	4	0	4	4	0

Ts (Solar transmittance): Proportion of solar energy transmitted through the fabric.

Rs (Solar reflectance): Proportion of solar radiation reflected by the fabric.

As (Solar absorptance): Proportion of solar radiation absorbed by the fabric.

Tv (Visible light transmittance): Total percentage of light radiation through the fabric over a wavelength of 380 to 780 nm.

Rv (visible light reflectance): Total percentage of light radiation reflected by the fabric over a wavelength of 380 to 780 nm.

SHGC (Total solar factor): Solar energy which actually penetrates into a room through the blind and glazing. A low value means good thermal performance.

Comfort Classification According to EN14501 :

0. Very little effect

1. Little effect

2. Moderate effect

3. Good effect

4. Very good effect



Team is the eternal power of HanDe

# HanDe®

## Hande Manufacturing(China)Co.,Ltd

Add: No.161, Yao TianHe Street,Yong shun Avenue,Yonghe Economic Zone,  
GZ Economic&Technological Development District, Guang zhou, China

Tel: 86-20-32222888 Fax: 86-20-32222205 PostCode: 511356

Mail: [info@handegroup.com.cn](mailto:info@handegroup.com.cn)



[www.handegroup.com.cn](http://www.handegroup.com.cn)