

Blockout

Prairie & Lintex
Mirabell & Monaco



SUNESSE[®]
Sunscreen Finesse

By HanDe

Product Certificate

Fire, Smoke Classification	Non-FR	【FR (US) - NFPA 701 TM#1 by Requirement】
Health & Safety	Greenguard® Gold	
	RoHS Directive (EU)2015/863	EN71 Part 3:1994
	AATCC112-2014	GB18586 - 2001
Colour fastness to light	Grade 6 ISO105 B02:2014	
	≥4.0 AATCC TM 16.3-2014; Option 3; Xenon Arc Lamp	
Warranty	5 Years	

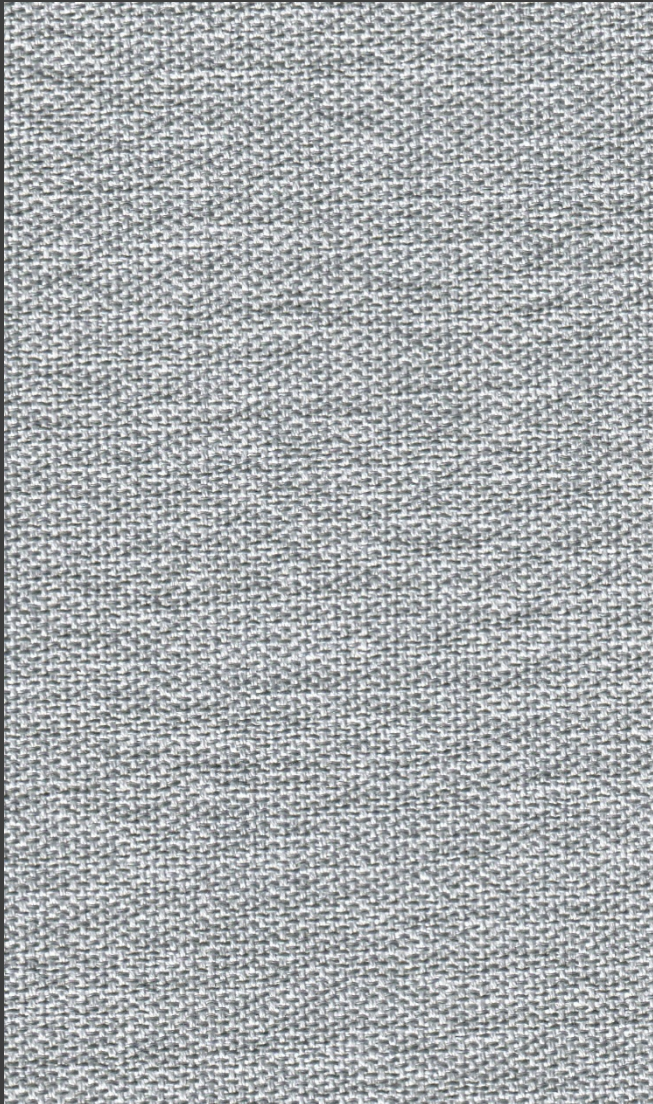


Technical Data

STYLE		Prairie	Lintex	Mirabell	Monaco
Composition		100% Polyester coated with Acrylic	100% Polyester coated with Acrylic	100% Polyester coated with Acrylic	100% Polyester coated with Acrylic
Openness Factor		0%	0%	0%	0%
UV Screen		100%	100%	100%	100%
Width	inch	98"-118"	98"-118"	98"-118"	98"-118"
	cm	250-300	250-300	250-300	250-300
Weight	oz/yd ²	12.68±5%	10.76±5%	10.61±5%	12.68±5%
(ISO 2286-2)	g/m ²	430 ± 5%	365 ± 5%	360 ± 5%	430 ± 5%
Thickness	inch	0.028 ± 5%	0.024 ± 5%	0.027 ± 5%	0.028 ± 5%
(ISO 2286-3)	mm	0.72 ± 5%	0.61 ± 5%	0.69 ± 5%	0.71 ± 5%
MECHANICAL RESISTANCE					
Breaking	Warp	≥1720 N/5cm	≥1170 N/5cm	≥1040 N/5cm	≥1980 N/5cm
(ISO 13934-1)	Weft	≥1300 N/5cm	≥1120 N/5cm	≥2150 N/5cm	≥2050 N/5cm
Tear	Warp	≥ 330 N	≥ 145 N	≥ 125 N	≥ 370 N
(ISO 4674)	Weft	≥ 240 N	≥ 240 N	≥ 325 N	≥ 590 N
Packing	Yards	27.4	27.4	27.4	27.4
(Roll Length)	Im	25	25	25	25

Colours

Prairie



S2261-4 Smoke



S2261-1 Ivoey



S2261-2 Shell

Colours

Lintex



S2262-2 Oyster



S2262-4 Chrome



S2262-5 Sail

Colours

Mirabell



S2265-3 Parchment



S2265-1 Cotton



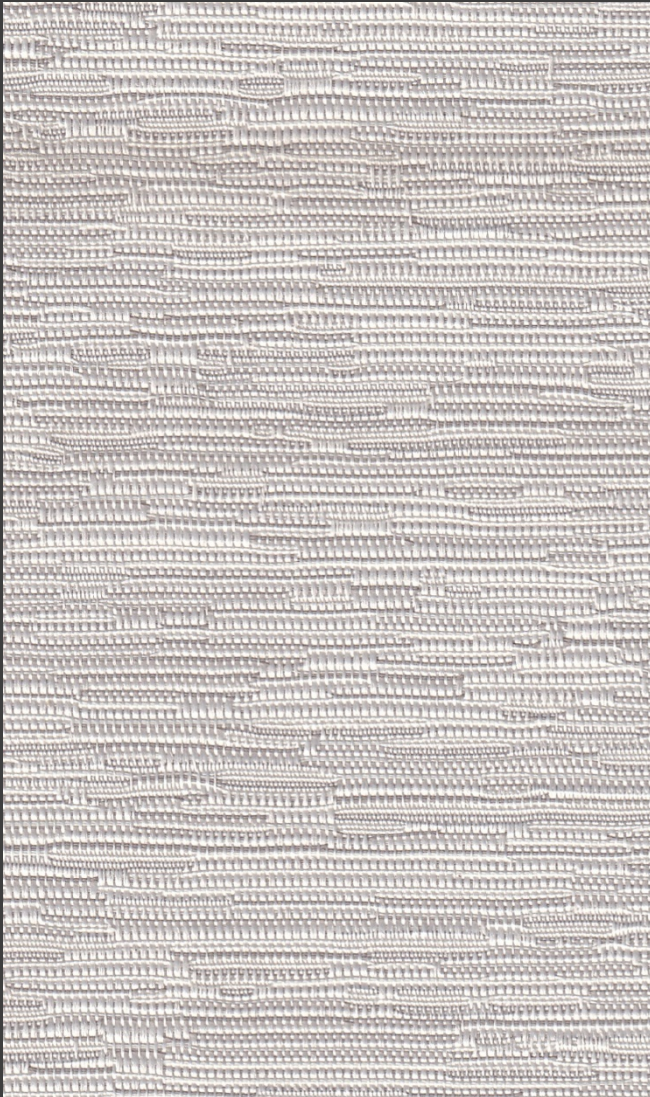
S2265-2 Linen



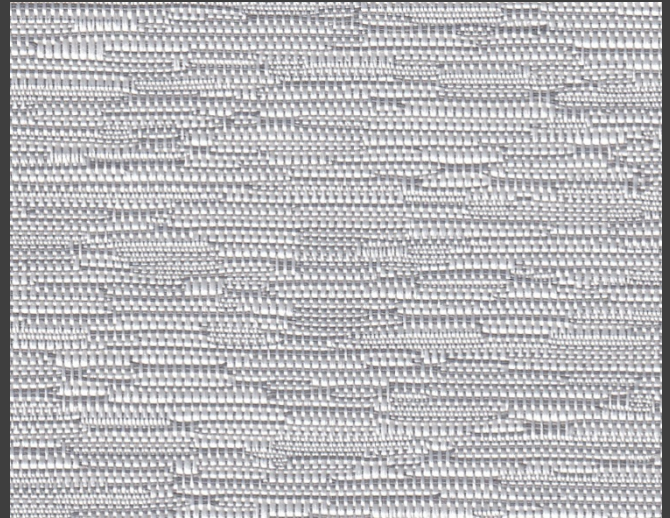
S2265-4 Pebble

Colours

Monaco



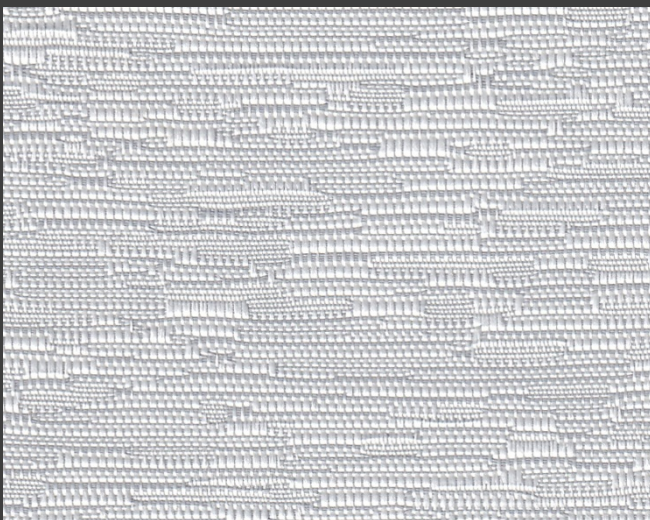
S2266-1 Chalk



S2266-2 Graphite



S2266-3 Cream



S2266-4 Concrete



S2266-5 Pearl



HanDe[®]

Hande Manufacturing(China)Co.,Ltd

Add: No.161, Yao TianHe Street,Yong shun Avenue,Yonghe Economic Zone,
GZ Economic&Technological Development District, Guang zhou, China

Tel: 86-20-32222888 Fax: 86-20-32222205 PostCode: 511356

Mail: info@handegroup.com.cn

www.handegroup.com.cn