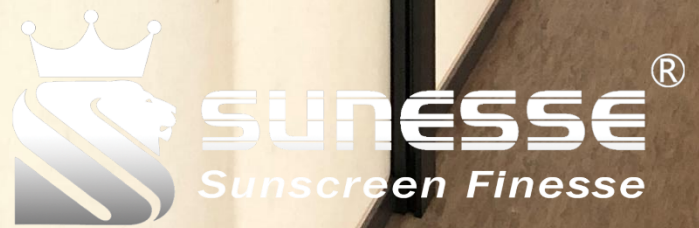


 Blockout Screen

Solar Blockout

Superior Durability



By HanDe

Product Certificate

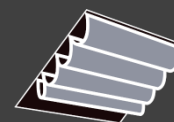
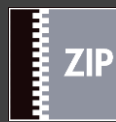
Fire, Smoke Classification	FR (US) - NFPA 701 TM#1 B1 (CN) - GB17591	BS (GB) - 5867 Part2 TypeB B1 (DE) – DIN4102
Health & Safety	Oeko-tex Standard 100 class IV RoHS Directive (EU)2015/863 AATCC112-2014	Greenguard® Gold EN71 Part 3:1994 GB18586 - 2001
Bacterial & Fungal Resistance	ASTM G21-15 0 Grade None fungi growth ASTM E 2180-07 Reduce more than 99.9% of bacteria	
Colour fastness to light	≥Grade 8 ISO105 B02:2014 ≥4.0 AATCC TM 16.3-2014; Option 3; Xenon Arc Lamp	
Warranty	5 Years	



Technical Data

STYLE		Solar Blockout - SK			
Composition		25% Polyester – 75% PVC		Mechanical Resistance	
Openness Factor		0%		Breaking	Warp ≥2700 N/5cm
UV Screen		100%		(ISO 13934-1)	Weft ≥ 990 N/5cm
Width	Inch	98" – 118"		Tear	Warp ≥110 N
	cm	250 – 300			Weft ≥ 40 N
Weight	oz/yd2	16.95±5%		Packing	32.8 yards
	(ISO 2286-2) g/m²	575 ± 5%			(Roll Length)
Thickness	Inch	0.027 ± 5%			
	(ISO 2286-3) mm	0.69 ± 5%			

Applications



Thermal and Optical Factors

Color	Fabric Properties					Fabric & Glass	
	Thermal			Optical		SHGC % Improvement	SHGC
	Ts	Rs	As	Rv	Tv		

Recommended Comfort Classification				
Thermal Control	Visual			
	Daylight Utilization	Glare Control	Night Privacy	Outward Visibility

Solar Blockout

0101 White	0	68	32	72	0	63%	0.13
0105 White*Grey	0	59	41	64	0	60%	0.16
0105 White*Sand	0	59	41	63	0	60%	0.17
0505 Grey	0	30	70	33	0	50%	0.27
0540 Grey*Dark Grey	0	24	76	27	0	48%	0.28
0405 Black*Grey	0	3	97	4	0	41%	0.35
0406 Black*Bronze	0	9	91	9	0	43%	0.33
0539 Black*Dark Grey	0	4	96	4	0	41%	0.35
0404 Black	0	4	96	4	0	41%	0.35

3	0	4	4	0
3	0	4	4	0
3	0	4	4	0
2	0	4	4	0
2	0	4	4	0
1	0	4	4	0
1	0	4	4	0
1	0	4	4	0
1	0	4	4	0

Ts (Solar transmittance): Proportion of solar energy transmitted through the fabric.

Rs (Solar reflectance): Proportion of solar radiation reflected by the fabric.

As (Solar absorptance): Proportion of solar radiation absorbed by the fabric.

Tv (Visible light transmittance): Total percentage of light radiation through the fabric over a wavelength of 380 to 780 nm.

Rv (visible light reflectance): Total percentage of light radiation reflected by the fabric over a wavelength of 380 to 780 nm.

SHGC (Total solar factor): Solar energy which actually penetrates into a room through the blind and glazing. A low value means good thermal performance.

Comfort Classification According to EN14501 : 0. Very little effect 1. Little effect 2. Moderate effect 3. Good effect 4. Very good effect

Fabrication

- ✦ Cutting: Cold, Ultrasonic or Crush
- ✦ Welding: Hot compression, Radio Frequency, High Frequency, Impulse,
- ✦ We recommend testing all cutting and welding methods prior to use to confirm they meet your individual fabric specifications.

Care & Cleaning

- ✦ Remove dust with vacuum cleaner or compressed air.
- ✦ Handle the fabric with care (clean and dry hands, or use of gloves).
- ✦ Do not scrub, use a plant-based eraser to remove superficial stains.
- ✦ Do not use solvents or any abrasive substance that might damage the face of fabric.
- ✦ All types of chemicals will cause permanent damage to the fabric. Therefore, if cleaning windows etc., the blind will have to be raised to avoid any direct or indirect spray or splatter of chemicals on the fabric.

SOLAR BLOCKOUT

INNOVATIVE SUNSCREEN FABRICS WITH BLOCK 100% VISIBLE LIGHT

- WELDING AVIABLE, Ideal for zipper blinds and ceiling blinds;
- Superior durability, Good to abrasion resistant and scratch resistant, EASY MAINTENANCE;
- Thermal Comfort : Excellent solar protection, Up to 68% of solar reflection (RS=68%,SHGC=0.13)
- Meet fire resistance requirements of most countries;
- Good Weather Resistance: light colorfastness 8 Grade (ISO105 B02);
- 9 COLORS , More inspiration for designers;
- To Optimize Solar Protection In All Applications, Maintaining a Consistent Design Aesthetic;
- Available In 2 Standard Widths: 250cm and 300cm, The CUSTOMIZABLE MAXIMUM WIDTH is 360cm;
- Health & Safty: Conforms To Standard Requirements For Buildings Open To The Public;
- Excellent digital printing medium for custom designs

360 cm

MAXIMUM WIDTH

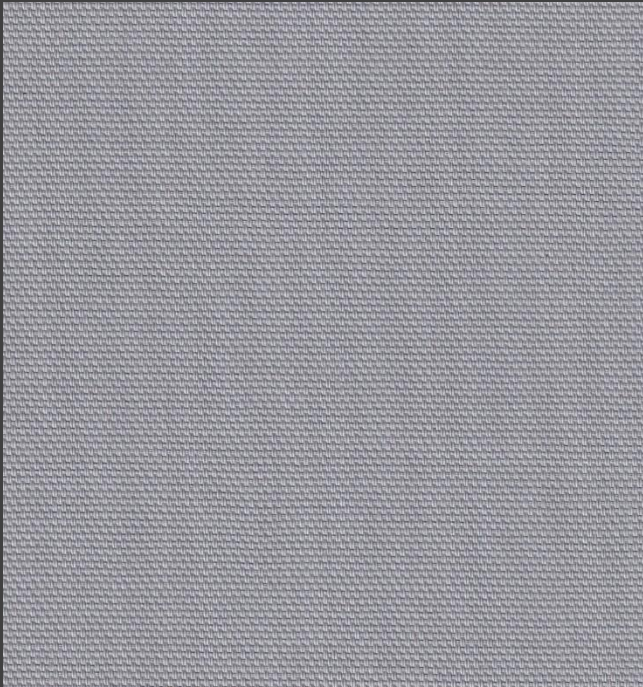
Fire Resistant

Welding

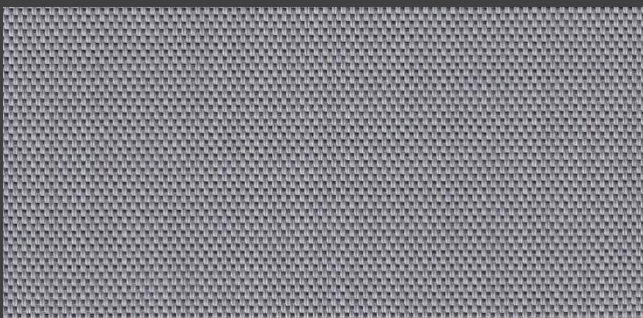
AVILABLE



Colours



SK0505 Grey



SK0540 Grey*Dark Grey



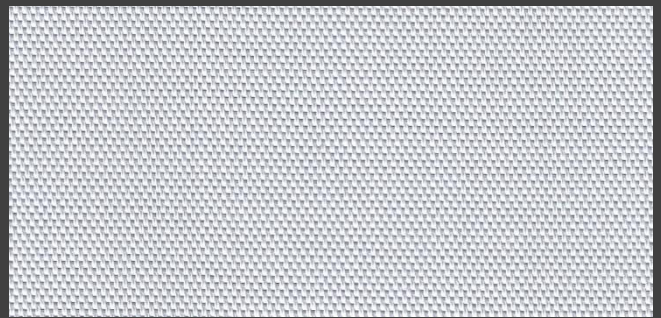
SK0405 Black*Grey



SK0539 Black*Dark Grey



SK0101 White* White



SK0105 White*Grey



SK0107 White*Sand



SK0406 Black*Bronze



SK0404 Black

* Colours may be slightly different from the actual ones



HanDe[®]

Hande Manufacturing(China)Co.,Ltd

Add: No.161, Yao TianHe Street,Yong shun Avenue,Yonghe Economic Zone,
GZ Economic&Technological Development District, Guang zhou, China

Tel: 86-20-3222888 Fax: 86-20-3222205 PostCode: 511356

Mail: info@handegroup.com.cn

www.handegroup.com.cn