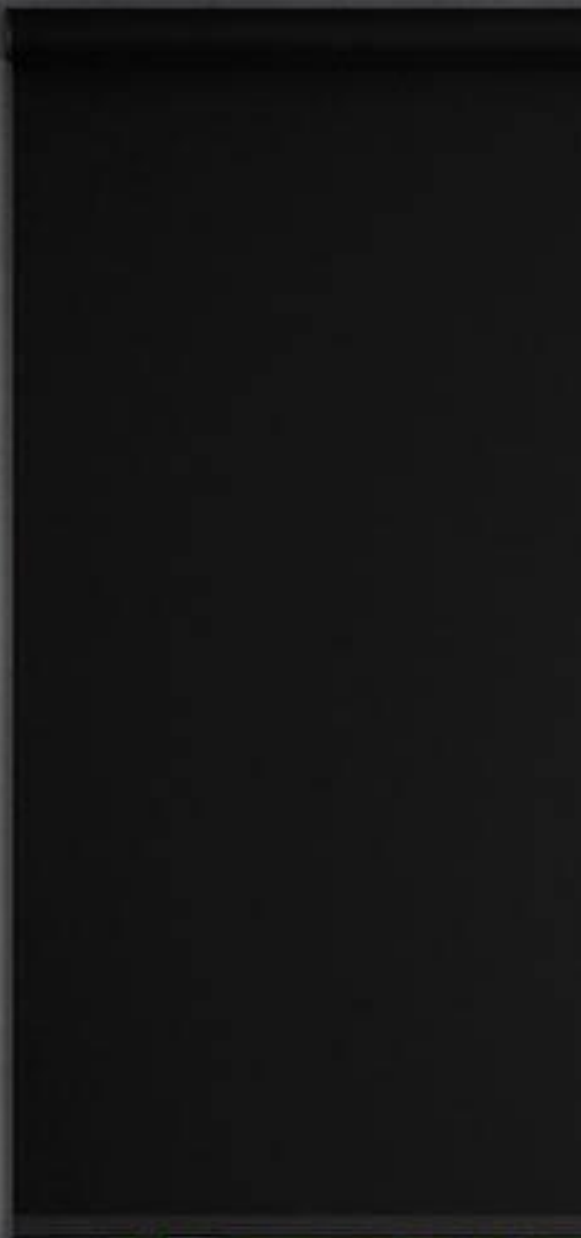


Blockout

Twilight



SUNESSE®
Sunscreen Finesse

By HanDe

Product Certificate

Fire, Smoke Classification	Non-FR FR(US) - NFPA 701 TM#1 (By Request)		
Health & Safety	Greenguard® Gold RoHS Directive (EU)2015/863 EN71 Part 3:1994 AATCC112-2014 GB18586 - 2001		
Colour fastness to light	≥Grade 6 ISO105 B02:2014 ≥4.0 AATCC TM 16.3-2014; Option 3; Xenon Arc Lamp		
Warranty	5 Years		



Technical Data

STYLE		Twilight		
Composition		100% Polyester coated with Acrylic		Mechanical Resistance
Openness Factor		0%		Breaking Warp ≥1700 N/5cm
UV Screen		Approximately 100%		(ISO 13934-1) Weft ≥1100 N/5cm
Width	Inch	118"		Tear Warp ≥85 N
	cm	300		(ISO 4674) Weft ≥60 N
Weight	oz/yd ²	10.31 ± 5%		Packing 32.8 yards
	(ISO 2286-2) g/m ²	350 ± 5%		(Roll Length) 30 Im
Thickness	Inch	0.016 ± 5%		
	(ISO 2286-3) mm	0.41 ± 5%		

Thermal and Optical Factors

Color	Fabric Properties					Fabric & Glass	
	Thermal			Optical		SHGC % Improvement	SHGC
	Ts	Rs	As	Rv	Tv		

Recommended Comfort Classification				
Thermal Control	Visual			
	Daylight Utilization	Glare Control	Night Privacy	Outward Visibility

Blockout Twilight - BackSide

White	0	75	25	91	0	58%	0.07
-------	---	----	----	----	---	-----	------

4	0	4	4	0
---	---	---	---	---

Ts (Solar transmittance): Proportion of solar energy transmitted through the fabric.

Rs (Solar reflectance): Proportion of solar radiation reflected by the fabric.

As (Solar absorptance): Proportion of solar radiation absorbed by the fabric.

Tv (Visible light transmittance): Total percentage of light radiation through the fabric over a wavelength of 380 to 780 nm.

Rv (visible light reflectance): Total percentage of light radiation reflected by the fabric over a wavelength of 380 to 780 nm.

SHGC (Total solar factor): Solar energy which actually penetrates into a room through the blind and glazing. A low value means good thermal performance.

Comfort Classification According to EN14501 : 0. Very little effect 1. Little effect 2. Moderate effect 3. Good effect 4. Very good effect

Care & Cleaning

- ✧ Remove dust with vacuum cleaner or compressed air.
- ✧ Handle the fabric with care (clean and dry hands, or use of gloves).
- ✧ Do not scrub, use a plant-based eraser to remove superficial stains.
- ✧ Do not use solvents or any abrasive substance that might damage the coating of fabric.
- ✧ All types of chemicals will cause permanent damage to the fabric. Therefore, if cleaning windows etc., the blind will have to be raised to avoid any direct or indirect spray or splatter of chemicals on the fabric.

Fabrication

- ✧ Cutting: Cold ,Crush.
- ✧ Welding: Heat impulse,high-frequency.
- ✧ For fabrics with a white acrylic coating on one side, it is recommended to handle it on a clean dust-free and dry surface.
- ✧ Recommendations for Handling: For an easier handling of wide width fabric and to avoid having marks on it, recommends to roll the panel(s) onto a tube at each stage of the making-up.



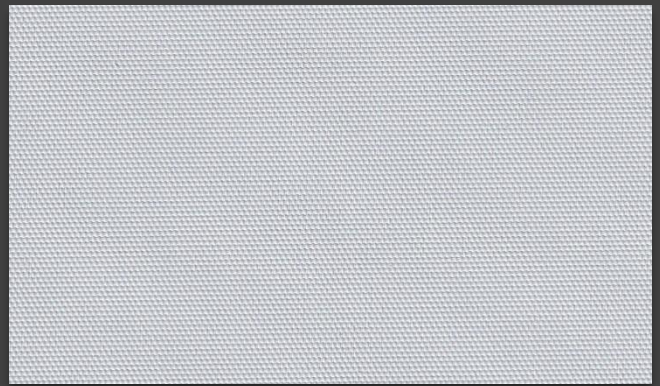
Colours



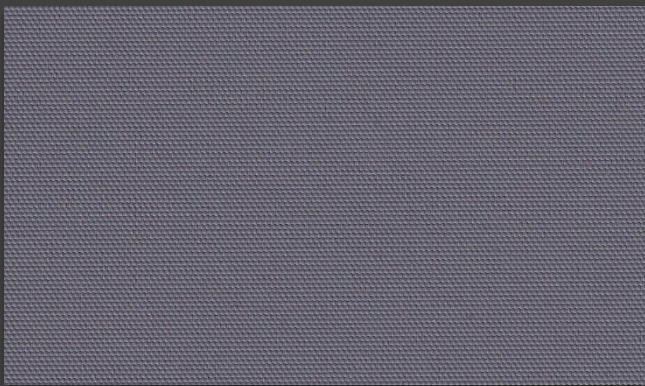
TL0102 Linen



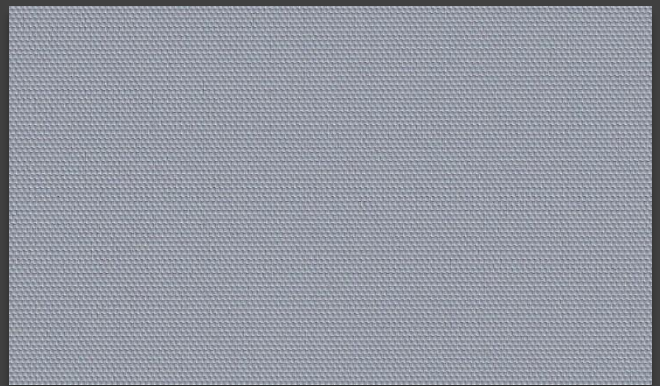
TL0101 White



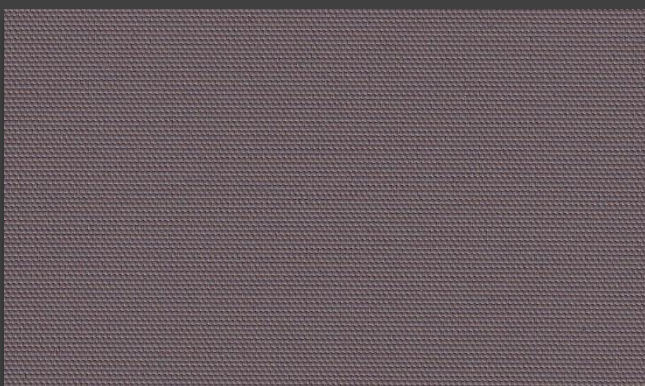
TL0107 Pearl



TL0105 Pewter



TL0103 Grey



TL0106 Bronze



TL0104 Black



HanDe[®]

Hande Manufacturing(China)Co.,Ltd

Add: No.161, Yao TianHe Street, Yong shun Avenue, Yonghe Economic Zone,
GZ Economic&Technological Development District, Guang zhou, China

Tel: 86-20-32222888 Fax: 86-20-32222205 PostCode: 511356

Mail: info@handegroup.com.cn



www.handegroup.com.cn