 Blockout Screen

# NightFall

Superior Durability



**SUNESSE**<sup>®</sup>  
Sunscreen Finesse

*By HanDe*

# Product Certificate

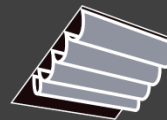
<b>Fire, Smoke Classification</b>	FR (US) - NFPA 701 TM#1 B1 (CN) - GB17591	BS (GB) - 5867 Part2 TypeB B1 (DE) – DIN4102
<b>Health &amp; Safety</b>	Oeko-tex Standard 100 class IV RoHS Directive (EU)2015/863 AATCC112-2014	Greenguard® Gold EN71 Part 3:1994 GB18586 - 2001
<b>Bacterial &amp; Fungal Resistance</b>	ASTM G21-15 0 Grade None fungi growth ASTM E 2180-07 Reduce more than 99.9% of bacteria	
<b>Colour fastness to light</b>	≥Grade 8 ISO105 B02:2014 ≥4.0 AATCC TM 16.3-2014; Option 3; Xenon Arc Lamp	
<b>Warranty</b>	5 Years	



## Technical Data

STYLE		NightFall - NF			
<b>Composition</b>		24% Polyester – 76% PVC		<b>Mechanical Resistance</b>	
<b>Openness Factor</b>		0%		<b>Breaking</b>	Warp ≥2250 N/5cm
<b>UV Screen</b>		100%		(ISO 13934-1)	Weft ≥1830 N/5cm
<b>Width</b>	Inch	98" – 118"		<b>Tear</b>	Warp ≥130 N
	cm	250 – 300			Weft ≥100 N
<b>Weight</b>	oz/yd2	18.57 ± 5%		<b>Packing</b>	32.8 yards
	(ISO 2286-2) g/m²	630 ± 5%			(Roll Length)
<b>Thickness</b>	Inch	0.028 ± 5%			
	(ISO 2286-3) mm	0.70 ± 5%			

## Applications



## Thermal and Optical Factors

Color	Fabric Properties					Fabric & Glass	
	Thermal			Optical		SHGC % Improvement	SHGC
	Ts	Rs	As	Rv	Tv		

Recommended Comfort Classification				
Thermal Control	Visual			
	Daylight Utilization	Glare Control	Night Privacy	Outward Visibility

### NightFall

0101 White	0	68	32	72	0	63%	0.13
0105 White*Grey	0	59	41	64	0	60%	0.16
0105 White*Sand	0	59	41	63	0	60%	0.17
0505 Grey	0	30	70	33	0	50%	0.27
0540 Grey*Dark Grey	0	24	76	27	0	48%	0.28
0405 Black*Grey	0	3	97	4	0	41%	0.35
0406 Black*Bronze	0	9	91	9	0	43%	0.33
0539 Black*Dark Grey	0	4	96	4	0	41%	0.35
0404 Black	0	4	96	4	0	41%	0.35

3	0	4	4	0
3	0	4	4	0
3	0	4	4	0
2	0	4	4	0
2	0	4	4	0
1	0	4	4	0
1	0	4	4	0
1	0	4	4	0
1	0	4	4	0

Ts (Solar transmittance): Proportion of solar energy transmitted through the fabric.

Rs (Solar reflectance): Proportion of solar radiation reflected by the fabric.

As (Solar absorptance): Proportion of solar radiation absorbed by the fabric.

Tv (Visible light transmittance): Total percentage of light radiation through the fabric over a wavelength of 380 to 780 nm.

Rv (visible light reflectance): Total percentage of light radiation reflected by the fabric over a wavelength of 380 to 780 nm.

SHGC (Total solar factor): Solar energy which actually penetrates into a room through the blind and glazing. A low value means good thermal performance.

Comfort Classification According to EN14501 : 0. Very little effect    1. Little effect    2. Moderate effect    3. Good effect    4. Very good effect

## Fabrication

✧ Cutting: Cold, Ultrasonic or Crush

✧ Welding: Hot compression, Radio Frequency, High Frequency, Impulse,

For reference only (Hot compression parameter) : Welding Temperature:160°C, Hot-pressing time: 20 S, Dwell time: 20 S

✧ We recommend testing all cutting and welding methods prior to use to confirm they meet your individual fabric specifications.

## Care & Cleaning

✧ Remove dust with vacuum cleaner or compressed air.

✧ Handle the fabric with care (clean and dry hands, or use of gloves).

✧ Do not scrub, use a plant-based eraser to remove superficial stains.

✧ Do not use solvents or any abrasive substance that might damage the face of fabric.

✧ All types of chemicals will cause permanent damage to the fabric. Therefore, if cleaning windows etc., the blind will have to be raised to avoid any direct or indirect spray or splatter of chemicals on the fabric.

# NIGHTFALL

## INNOVATIVE SUNSCREEN FABRICS WITH BLOCK 100% VISIBLE LIGHT

- Thermal Comfort : Excellent solar protection, Up to 68% of solar reflection (RS=78%,SHGC=0.13)
  - WELDING AVIABLE, Ideal for zipper blinds and ceiling blinds;
  - Superior durability, Good to abrasion resistant and scratch resistant, EASY MAINTENANCE;
  - Good Weather Resistance: light colorfastness 8 Grade (ISO105 B02);
  - Meet fire resistance requirements of most countries;
  - Excellent MECHANICAL RESISTANCE And Dimensional Stability For Large Roller Blinds;
  - 9 COLORS , More inspiration for designers;
- To Optimize Solar Protection In All Applications, Maintaining a Consistent Design Aesthetic;
- Available In 2 Standard Widths: 250cm and 300cm, The CUSTOMIZABLE MAXIMUM WIDTH is 360cm;
  - Health & Safty: Conforms To Standard Requirements For Buildings Open To The Public;
  - Excellent digital printing medium for custom designs.

---

**360** cm

MAXIMUM WIDTH

---

**High Tensile**

2250<sub>warp</sub>/ 1830<sub>weft</sub> N/5cm

---

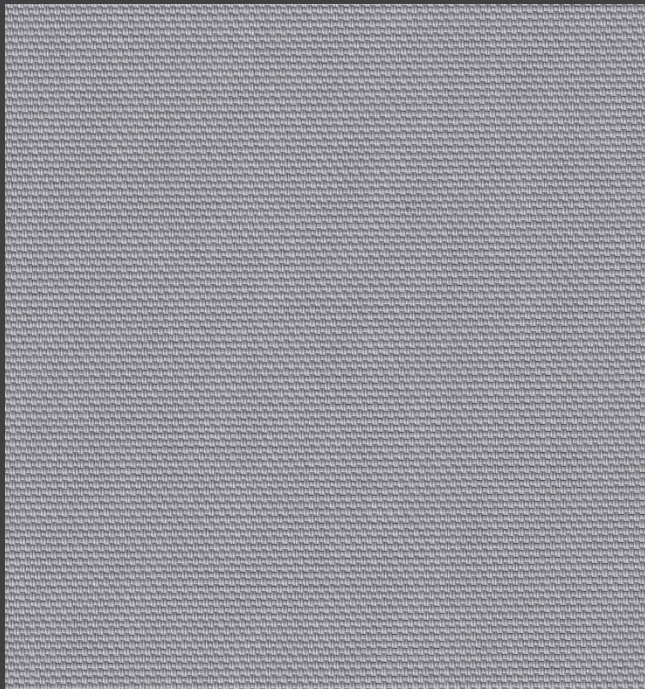
**Welding**

AVILABLE

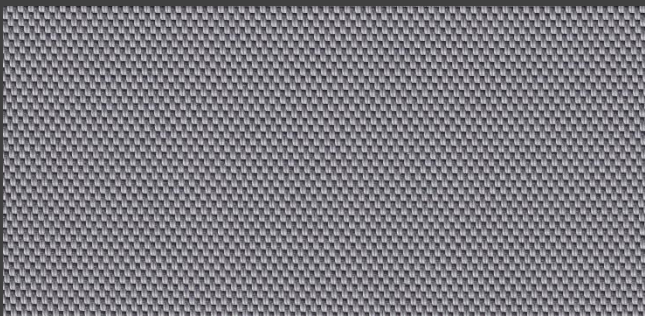
---



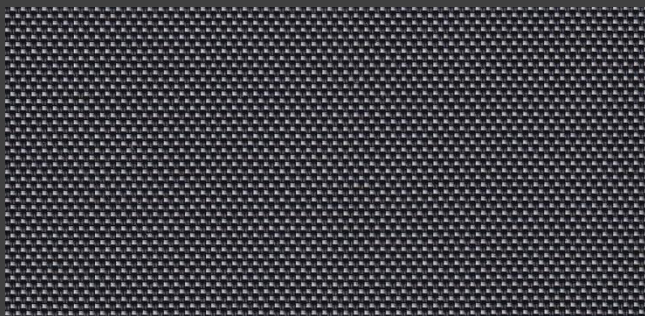
# Colours



**NF0505 Grey**



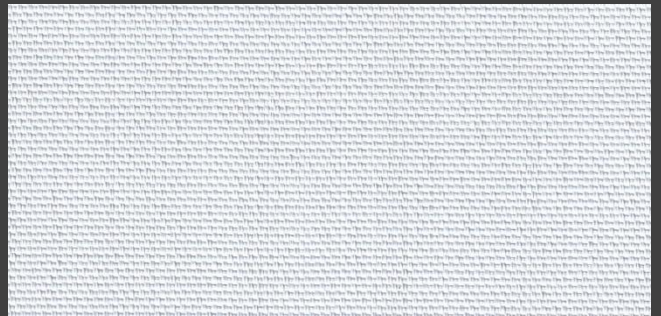
**NF0540 Grey\*Dark Grey**



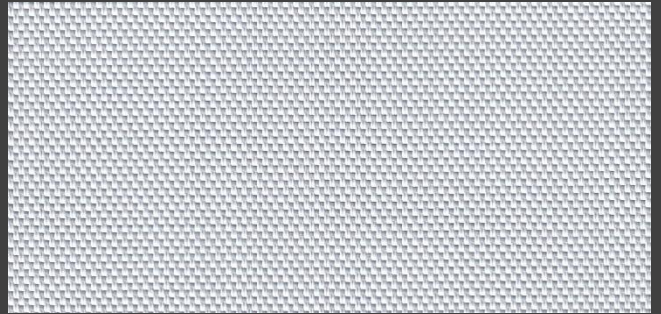
**NF0405 Black\*Grey**



**NF0539 Black\*Dark Grey**



**NF0101 White\* White**



**NF0105 White\*Grey**



**NF0107 White\*Sand**



**NF0406 Black\*Bronze**



**NF0404 Black**

\* Colours may be slightly different from the actual ones



**HanDe<sup>®</sup>**

**Hande Manufacturing(China)Co.,Ltd**

Add: No.161, Yao TianHe Street,Yong shun Avenue,Yonghe Economic Zone,  
GZ Economic&Technological Development District, Guang zhou, China

Tel: 86-20-3222888 Fax: 86-20-3222205 PostCode: 511356

Mail: info@handegroup.com.cn

[www.handegroup.com.cn](http://www.handegroup.com.cn)