 UltraFine Screen

UltraFine Twill

UDT01 / UT03



SUNESSE®
Sunscreen Finesse

By HanDe

Product Certificate

Fire, Smoke Classification	FR (US) - NFPA 701 TM#1 B1(CN) – GB17591	BS (GB) - 5867 Part2 TypeB B1(DE) - DIN4102
Health & Safety	Oeko-tex Standard 100 class IV RoHS Directive (EU)2015/863 AATCC112-2014	Greenguard® Gold MIF Certificate EN71 Part 3:1994 GB18586 - 2001
Bacterial & Fungal Resistance	ASTM G21-15 0 Grade None fungi growth ASTM E 2180-07 Reduce more than 99.9% of bacteria	
Colour fastness to light	Grade 8 ISO105 B02:2014 ≥4.0 AATCC TM 16.3-2014; Option 3; Xenon Arc Lamp	
Warranty	5 Years	



Technical Data

STYLE		UDT01	UT03
Composition		30%Polyester 70% PVC	30%Polyester 70% PVC
Openness Factor		≈3%	≈3%
UV Screen		Up to 97%	Up to 97%
Width	inch	98"–118"–126"	98"–118"–126"
	cm	250–300–320	250–300–320
Weight	oz/yd ²	9.29 ± 5%	9.08 ± 5%
	(ISO 2286–2) g/m ²	315 ± 5%	308 ± 5%
Thickness	inch	0.017 ± 5%	0.018 ± 5%
	(ISO 2286–3) mm	0.44 ± 5%	0.46 ± 5%
Mechanical	Resistance		
Breaking (ISO 13934–1)	Warp	≥1460 N/5cm	≥1450 N/5cm
	Weft	≥1200 N/5cm	≥1290 N/5cm
Tear (ISO 4674)	Warp	≥ 82 N	≥ 90 N
	Weft	≥ 63 N	≥ 80 N
Packing (Roll Length)		32.8 yards 30 lm	32.8 yards 30 lm

ULTRAFINE TWILL UDT01 - UT03

ULTRAFINE YARN AND DOUBLE-SIDED DESIGN BRING SILKY SENSATIONS AND COMBINE THERMAL WITH VISUAL COMFORT

- ✦ With the exclusive patented coating process, precise coating technology controlled by 0.01mm and 60tex ultrafine coated yarn diam is only 0.18mm
- ✦ The fabric woven by ultrafine yarn is more visible and the sight will not be concentrated on the yarn, so as to ensure the visual effect of the fabric.
- ✦ Fine woven, soft touch, Elegant and thin design can be used in tight spaces
- ✦ 2 Style, 2 Openness Factor, 9 colors
- ✦ 2 Standard width, 250-300cm, the Maximum width 320cm
- ✦ Extra wide width: 320cm for large windows to create a seamless aesthetic
- ✦ Optimum durability: Mechanical endurance test of 10,000 cycles (Class 3 ,JG/T 254-2015)

2 STYLE

OPENNESS FACTOR 1% & 3%

320 cm

EXTRA WIDTH



Care & Cleaning

- ✦ Remove dust with vacuum cleaner or compressed air.
- ✦ Handle the fabric with care (clean and dry hands, or use of gloves).
- ✦ Do not scrub, use a plant-based eraser to remove superficial stains.
- ✦ Do not use solvents or any abrasive substance that might damage the face of fabric.
- ✦ All types of chemicals will cause permanent damage to the fabric. Therefore, if cleaning windows etc., the blind will have to be raised to avoid any direct or indirect spray or splatter of chemicals on the fabric.

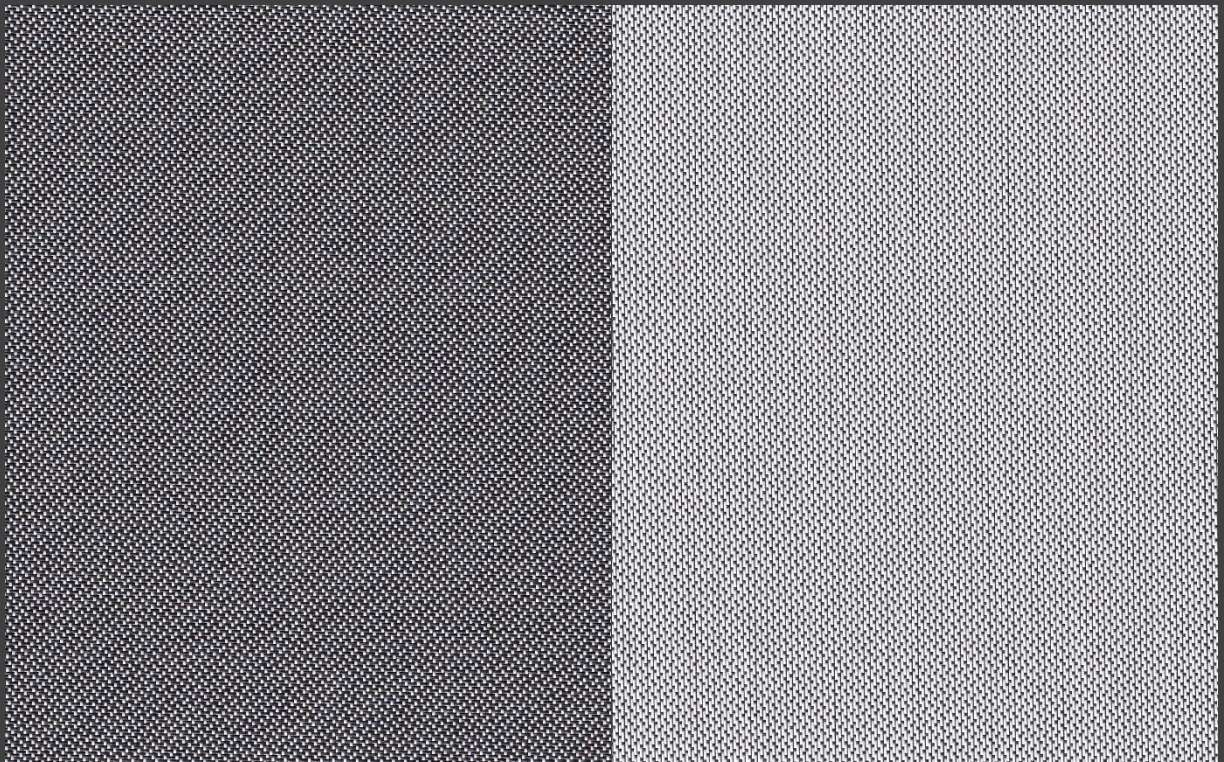
Fabrication

- ✦ Cutting: Cold, Ultrasonic, Crush.
- ✦ Welding: Heat impulse, high-frequency.
- ✦ Recommendations for Handling: For an easier handling of wide width fabric and to avoid having marks on it, recommends to roll the panel(s) onto a tube at each stage of the making-up.

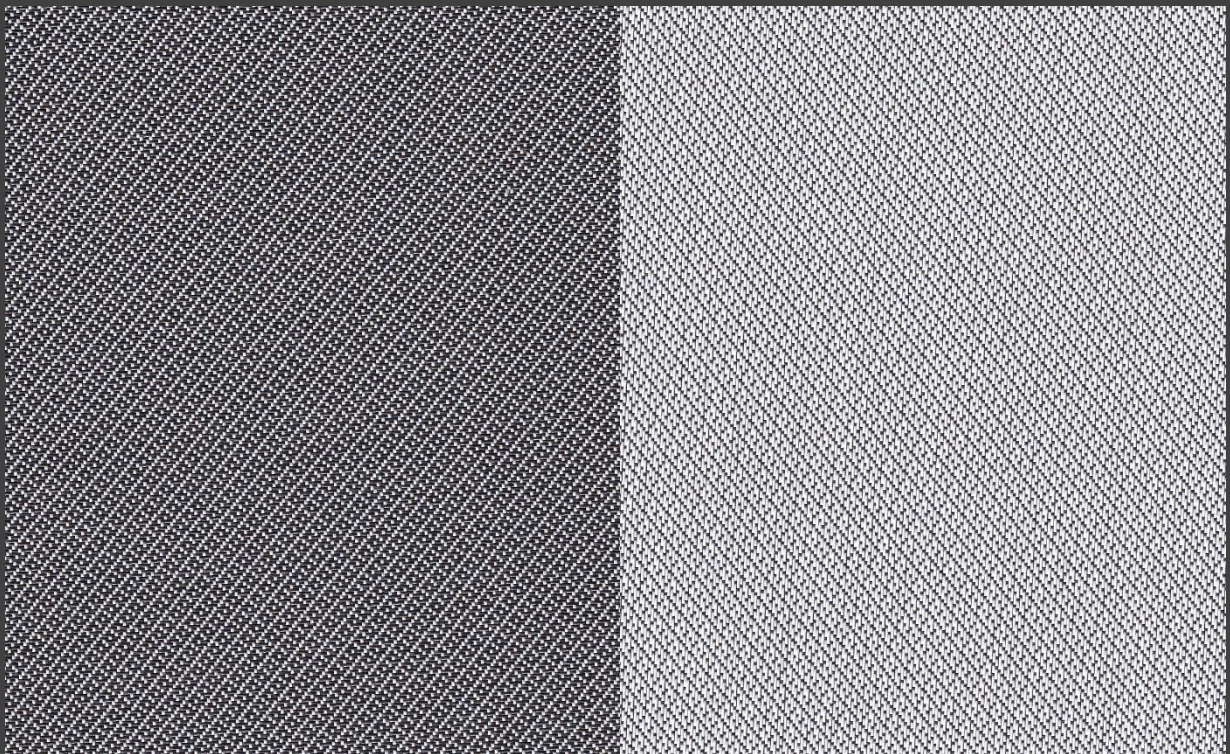
Openness Factor

0104 White * Black

UDT 1%

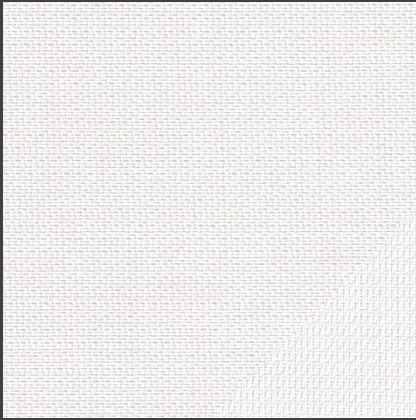


UT 3%



Colors

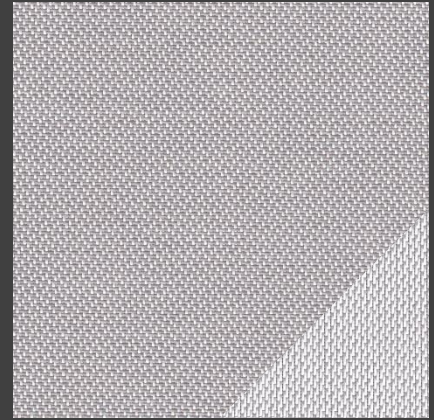
UDT 1%



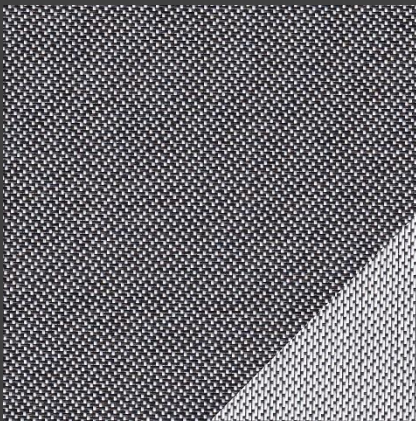
0101 White * White



0102 White * Linen



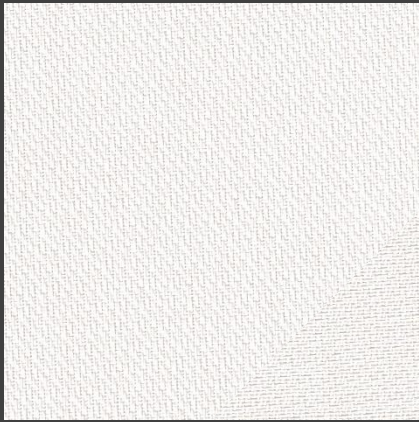
0105 White * Grey



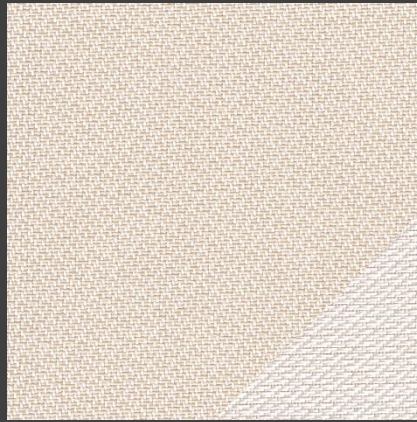
0104 White * Black

Colors

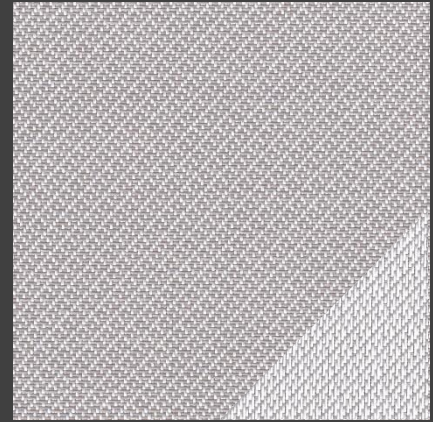
UT 3%



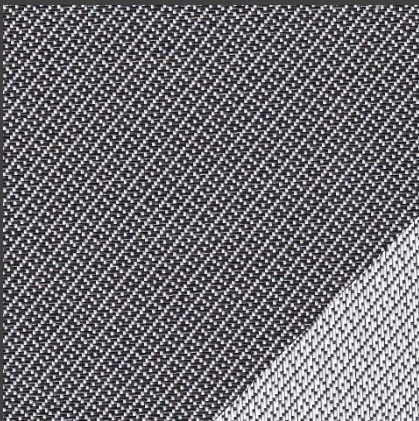
0101 White * White



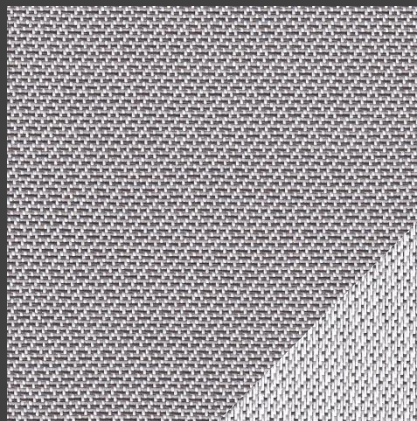
0102 White * Linen



0105 White * Grey



0104 White * Black



0476 White * Dark Grey • Grey



HanDe[®]

Hande Manufacturing(China)Co.,Ltd

Add: No.161, Yao TianHe Street,Yong shun Avenue,Yonghe Economic Zone,
GZ Economic&Technological Development District, Guang zhou, China

Tel: 86-20-3222888 Fax: 86-20-3222205 PostCode: 511356

Mail: info@handegroup.com.cn



www.handegroup.com.cn