

 Fibreglass Screen

Serge GS

GS03



By HanDe

Product Certificate

Fire, Smoke Classification	FR (US) - NFPA 701 TM#1 B1(CN) - GB8624	BS (GB) - 5867 Part2 TypeB M1 (F) - NF P 92-507	B1(DE) - DIN4102
Health & Safety	Oeko-tex Standard 100 class IV RoHS Directive (EU)2015/863 AATCC112-2014	Greenguard® Gold EN71 Part 3:1994 GB18586 - 2001	MIF Certificate
Bacterial & Fungal Resistance	ASTM G21-15 0 Grade	None fungi growth	
	ASTM E 2180-07	Reduce more than 99.9% of bacteria	
Colour fastness to light	Grade 8 ISO105 B02:2014 ≥4.0 AATCC TM 16.3-2014; Option 3; Xenon Arc Lamp		
Warranty	5 Years		



Technical Data

STYLE		Serge GS03
Composition		36% Fibreglass 64% PVC
Openness Factor		≈ 3%
UV Screen		Up to 97%
Width	inch	98"–118"
	cm	250–300
Weight	oz/yd ²	18.13±5%
(ISO 2286–2)	g/m ²	615 ± 5%
Thickness	inch	0.034 ± 5%
(ISO 2286–3)	mm	0.87 ± 5%
Mechanical	Resistance	
Breaking	Warp	≥2500 N/5cm
(ISO 13934–1)	Weft	≥2000 N/5cm
Tear	Warp	≥145 N
(ISO 4674)	Weft	≥135 N
Packing		32.8 yards
(Roll Length)		30 Im

Thermal and Optical Factors

Color	Side	Fabric Properties					Fabric & Glass	
		Thermal			Optical		SHGC % Improvement	SHGC
		Ts	Rs	As	Rv	Tv		

Recommended Comfort Classification				
Thermal Control	Visual			
	Daylight Utilization	Glare Control	Night Privacy	Outward Visibility

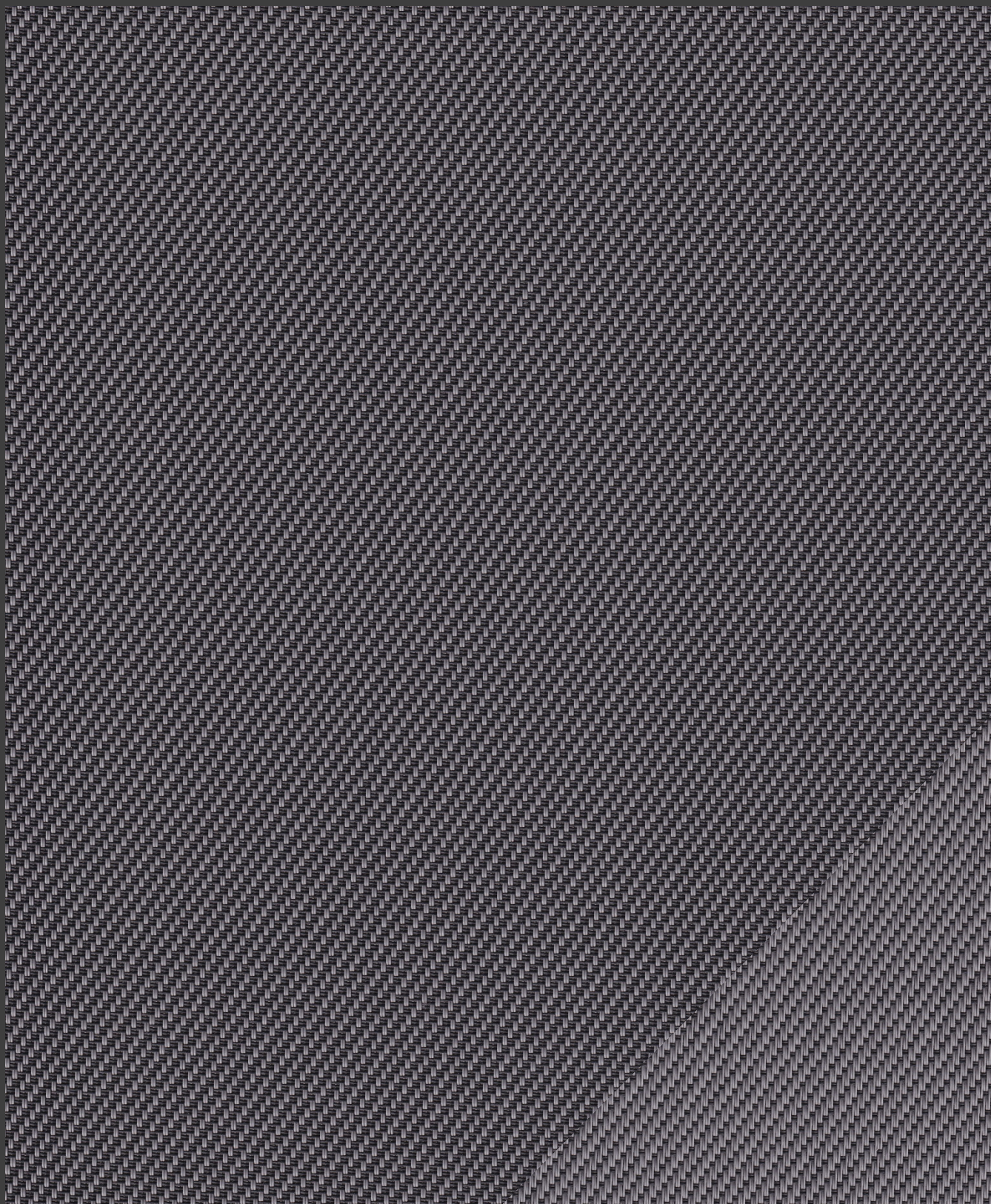
Serge GS 3%

0101 White*White	A	8	77	15	81	7	55%	0.14
0102 White*Linen	A	9	66	25	68	7	47%	0.18
	B	9	71	20	73	7	51%	0.17
0105 White*Grey	A	6	46	48	47	5	34%	0.24
	B	6	58	36	60	5	41%	0.21
0503 Grey*Pearl	A	4	28	68	26	4	32%	0.29
	B	4	25	71	23	4	31%	0.29
0504 Grey*Black	A	5	13	82	13	5	21%	0.34
	B	5	17	78	16	4	25%	0.34
0505 Grey*Grey	A	6	22	72	21	5	28%	0.32
0509 Grey*Blue	A	5	21	74	16	5	28%	0.32
	B	5	21	74	18	5	28%	0.32

3	2	0	1	1
2	2	0	2	1
2	1	1	2	1
1	1	1	1	3
1	1	1	1	3
1	1	1	1	3
1	1	2	2	2

Ts (Solar transmittance): Proportion of solar energy transmitted through the fabric. Rs (Solar reflectance): Proportion of solar radiation reflected by the fabric. As (Solar absorptance): Proportion of solar radiation absorbed by the fabric. Tv (Visible light transmittance): Total percentage of light radiation through the fabric over a wavelength of 380 to 780 nm. Rv (visible light reflectance): Total percentage of light radiation reflected by the fabric over a wavelength of 380 to 780 nm. SHGC (Total solar factor): Solar energy which actually penetrates into a room through the blind and glazing. A low value means good thermal performance.

Comfort Classification According to EN14501 : 0. Very little effect 1. Little effect 2. Moderate effect 3. Good effect 4. Very good effect

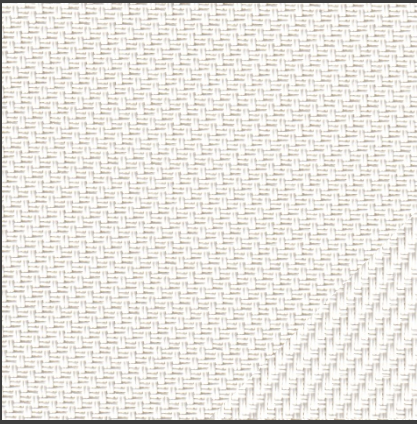


GS 3%

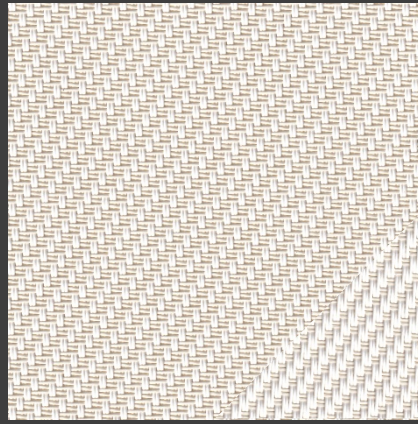
Openness Factor may be slightly different from the actual ones

Colours

GS 3%



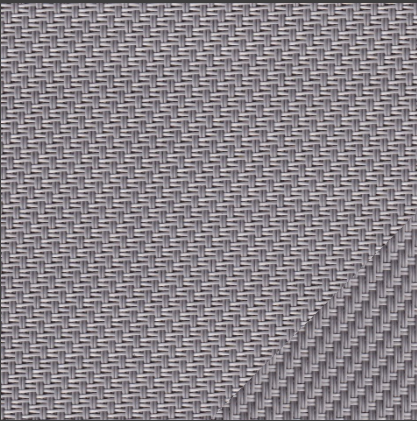
0101 White * White



0102 White * Linen



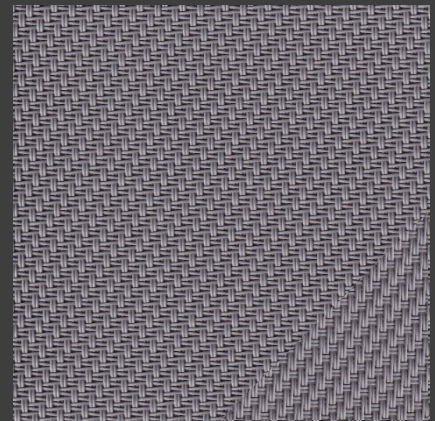
0105 White * Grey



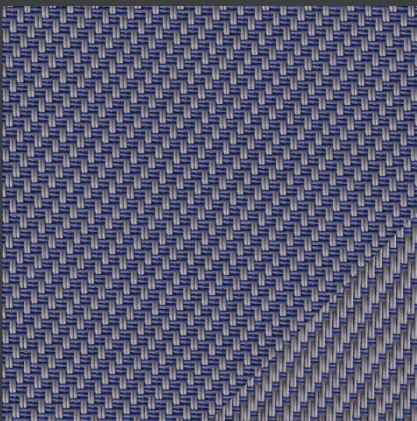
0503 Grey * Pearl



0504 Grey * Black



0505 Grey * Grey



0509 Grey * Blue

* Colours may be slightly different from the actual ones



HanDe[®]

Hande Manufacturing(China)Co.,Ltd

Add: No.161, Yao TianHe Street, Yong shun Avenue, Yonghe Economic Zone,
GZ Economic&Technological Development District, Guang zhou, China

Tel: 86-20-3222888 Fax: 86-20-3222205 PostCode: 511356

Mail: info@handegroup.com.cn

www.handegroup.com.cn