

Digital Printing



SUNESSE®
Sunscreen Finesse

By HanDe

Product Certificate

Fire, Smoke Classification FR (US) - NFPA 701 TM#1 BS (GB) - 5867 Part2 TypeB
B1(CN) - GB50222

Health & Safety Oeko-tex Standard 100 class IV Greenguard® Gold
RoHS Directive (EU)2015/863 EN71 Part 3:1994
AATCC112-2014 GB18586 - 2001

Bacterial & Fungal Resistance ASTM G21-09
ASTM E 2180-07 Reduce more than 99.9% of bacteria

Colour fastness to light ≥Grade 6 ISO105 B02:2014

Warranty 5 Years



Technical Data

STYLE		DP 5%
Composition		25%Polyester 75% PVC
Openness Factor		≈5%
UV Screen		Up to 99%
Width	inch	79"-98"-118"
	cm	200-250-300
Weight	oz/yd ²	12.35 ± 5%
	(ISO 2286-2) g/m ²	420 ± 5%
Thickness	inch	0.024 ± 5%
	(ISO 2286-3) mm	0.62 ± 5%
Mechanical		
Breaking	Warp	≥1550 N/5cm
	(ISO 13934-1) Weft	≥1400 N/5cm
Tear	Warp	≥125 N
	(ISO 4674) Weft	≥110 N
Resistance		
Packing		32.8 yards
(Roll Length)		30 Im

Thermal and Optical Factors

Color	Fabric Properties					Fabric & Glass	
	Thermal			Optical		SHGC % Improvement	SHGC
	Ts	Rs	As	Rv	Tv		

Recommended Comfort Classification				
Thermal Control	Visual			
	Daylight Utilization	Glare Control	Night Privacy	Outward Visibility

DP 5%

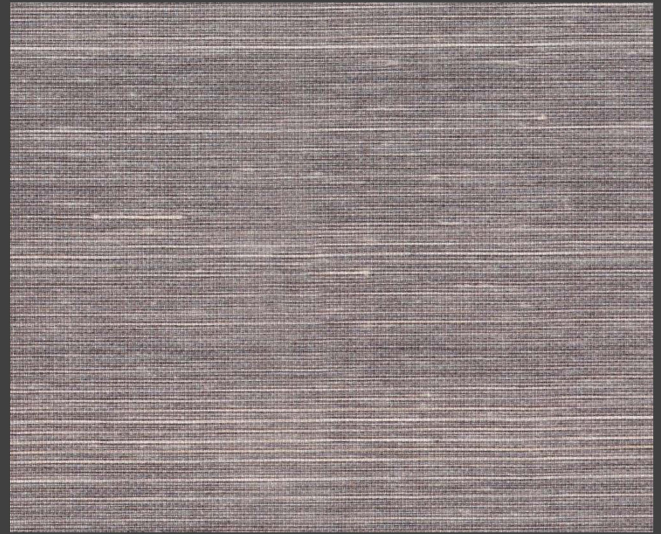
0101 White*White	21	67	12	69	17	51%	0.25
------------------	----	----	----	----	----	-----	------

2	2	0	1	1
---	---	---	---	---

Ts (Solar transmittance): Proportion of solar energy transmitted through the fabric. Rs (Solar reflectance): Proportion of solar radiation reflected by the fabric. As (Solar absorptance): Proportion of solar radiation absorbed by the fabric. Tv (Visible light transmittance): Total percentage of light radiation through the fabric over a wavelength of 380 to 780 nm. Rv (visible light reflectance): Total percentage of light radiation reflected by the fabric over a wavelength of 380 to 780 nm. SHGC (Total solar factor): Solar energy which actually penetrates into a room through the blind and glazing. A low value means good thermal performance.

Comfort Classification According to EN14501 : 0. Very little effect 1. Little effect 2. Moderate effect 3. Good effect 4. Very good effect

Colors



Pr - 01



Pr - 10



Pr - 17



Pr - 22

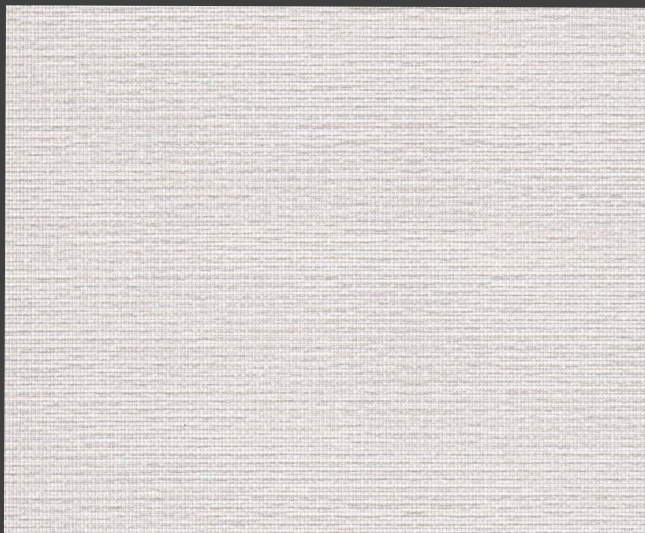


Pr - 32

Colors



BEL-06



BEL-07



BEL-08

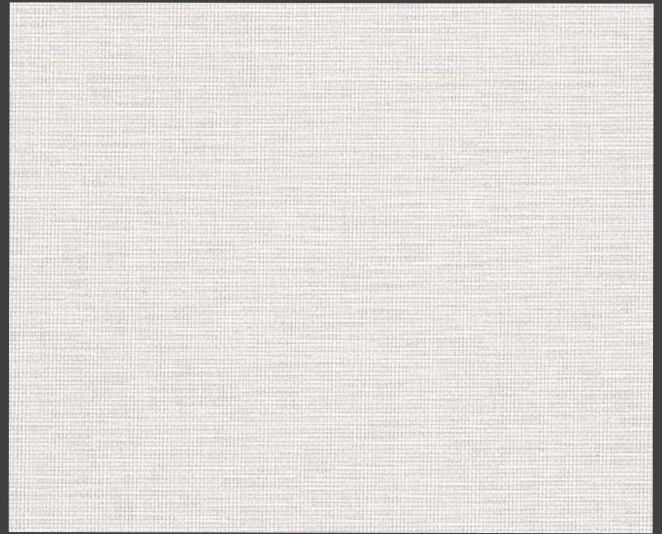


BEL-09



BEL-20

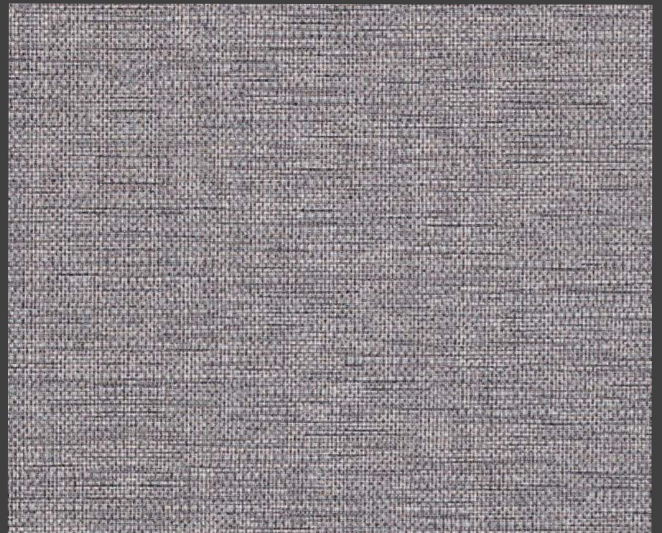
Colors



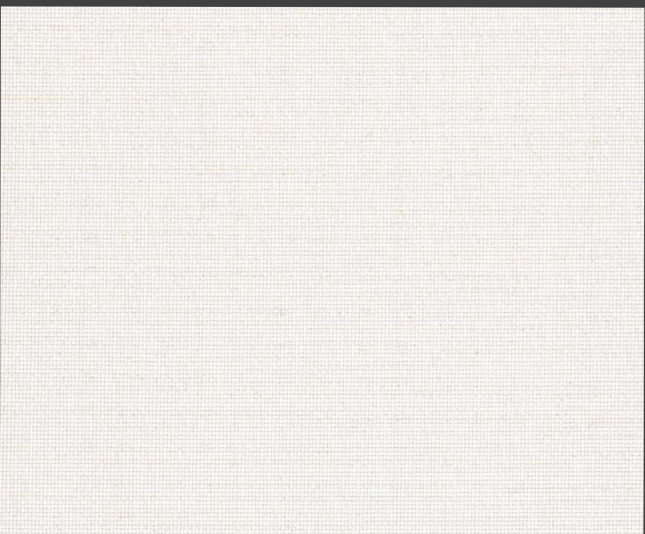
15023



15023-1



15023-B



15023-C



15030



HanDe[®]

Hande Manufacturing(China)Co.,Ltd

Add: No.161, Yao TianHe Street, Yong shun Avenue, Yonghe Economic Zone,
GZ Economic&Technological Development District, Guang zhou, China

Tel: 86-20-32222888 Fax: 86-20-32222205 PostCode: 511356

Mail: info@handegroup.com.cn



www.handegroup.com.cn