

# Special

---

Maze / Viewscreen / Mocha  
Lausanne / Champlain / Candela



---

*By HanDe*

## Product Certificate

|  |  |  |
|--|--|--|
| <b>Fire, Smoke Classification</b>        | FR (US) - NFPA 701 TM#1<br>B1(CN) - GB50222                                    | BS (GB) - 5867 Part2 TypeB                             |
| <b>Health &amp; Safety</b>               | Oeko-tex Standard 100 class IV<br>RoHS Directive (EU)2015/863<br>AATCC112-2014 | Greenguard® Gold<br>EN71 Part 3:1994<br>GB18586 - 2001 |
| <b>Bacterial &amp; Fungal Resistance</b> | ASTM G21-09<br>ASTM E 2180-07 Reduce more than 99.9% of bacteria               |  |
| <b>Colour fastness to light</b>          | Grade 8 ISO105 B02:2014<br>≥4.0 AATCC TM 16.3-2014; Option 3; Xenon Arc Lamp   |  |
| <b>Warranty</b>                          | 5 Years  |  |



## Technical Data

| STYLE                            |                                  | Maze                     | Viewscreen               | Mocha                    |
|----------------------------------|----------------------------------|--------------------------|--------------------------|--------------------------|
| <b>Composition</b>               |                                  | 26% Polyester<br>74% PVC | 26% Polyester<br>74% PVC | 27% Polyester<br>73% PVC |
| <b>Openness Factor</b>           |                                  | ≈9%                      | ≈12%                     | ≈12%                     |
| <b>UV Screen</b>                 |                                  | Up to 90%                | Up to 88%                | Up to 88%                |
| <b>Width</b>                     | inch                             | 118"                     | 118"                     | 114"                     |
|                                  | cm                               | 300                      | 300                      | 290                      |
| <b>Weight</b>                    | oz/yd <sup>2</sup>               | 14.70±5%                 | 13.38±5%                 | 9.65±5%                  |
|                                  | (ISO 2286-2)<br>g/m <sup>2</sup> | 500 ± 5%                 | 455 ± 5%                 | 325 ± 5%                 |
| <b>Thickness</b>                 | inch                             | 0.029 ± 5%               | 0.032 ± 5%               | 0.024 ± 5%               |
|                                  | (ISO 2286-3)<br>mm               | 0.74 ± 5%                | 0.82 ± 5%                | 0.60 ± 5%                |
| <b>Mechanical</b>                |                                  | <b>Resistance</b>        |                          |                          |
| <b>Breaking</b><br>(ISO 13934-1) | Warp                             | ≥1800 N/5cm              | ≥1800 N/5cm              | ≥1200 N/5cm              |
|                                  | Weft                             | ≥1500 N/5cm              | ≥1000 N/5cm              | ≥ 700 N/5cm              |
| <b>Tear</b><br>(ISO 4674)        | Warp                             | ≥160 N                   | ≥190 N                   | ≥160 N                   |
|                                  | Weft                             | ≥140 N                   | ≥150 N                   | ≥140 N                   |
| <b>Packing</b><br>(Roll Length)  |                                  | 32.8 yards<br>30 lm      | 32.8 yards<br>30 lm      | 32.8 yards<br>30 lm      |

## Product Certificate

|  |  |  |
|--|--|--|
| <b>Fire, Smoke Classification</b>        | FR (US) - NFPA 701 TM#1<br>B1(CN) - GB50222                                    | BS (GB) - 5867 Part2 TypeB                             |
| <b>Health &amp; Safety</b>               | Oeko-tex Standard 100 class IV<br>RoHS Directive (EU)2015/863<br>AATCC112-2014 | Greenguard® Gold<br>EN71 Part 3:1994<br>GB18586 - 2001 |
| <b>Bacterial &amp; Fungal Resistance</b> | ASTM G21-09<br>ASTM E 2180-07 Reduce more than 99.9% of bacteria               |  |
| <b>Colour fastness to light</b>          | Grade 8 ISO105 B02:2014<br>≥4.0 AATCC TM 16.3-2014; Option 3; Xenon Arc Lamp   |  |
| <b>Warranty</b>                          | 5 Years  |  |



## Technical Data

| STYLE                  |                    | Lausanne                         | Champlain                | Candela                  |
|------------------------|--------------------|----------------------------------|--------------------------|--------------------------|
| <b>Composition</b>     |                    | 30% Polyester<br>4% Flax 66% PVC | 22% Polyester<br>78% PVC | 22% Polyester<br>78% PVC |
| <b>Openness Factor</b> |                    | ≈5%                              | ≈25%                     | ≈5%                      |
| <b>UV Screen</b>       |                    | Up to 94%                        | Up to 81%                | Up to 94%                |
| <b>Width</b>           | inch               | 98"                              | 114"                     | 98"                      |
|                        | cm                 | 250                              | 290                      | 250                      |
| <b>Weight</b>          | oz/yd <sup>2</sup> | 9.56±5%                          | 8.38±5%                  | 12.35±5%                 |
| (ISO 2286-2)           | g/m <sup>2</sup>   | 325 ± 5%                         | 285 ± 5%                 | 420 ± 5%                 |
| <b>Thickness</b>       | inch               | 0.018 ± 5%                       | 0.020 ± 5%               | 0.024 ± 5%               |
| (ISO 2286-3)           | mm                 | 0.45 ± 5%                        | 0.52 ± 5%                | 0.60 ± 5%                |
| <b>Mechanical</b>      | <b>Resistance</b>  |                                  |                          |                          |
| <b>Breaking</b>        | Warp               | ≥1700 N/5cm                      | ≥850 N/5cm               | ≥1800 N/5cm              |
| (ISO 13934-1)          | Weft               | ≥1000 N/5cm                      | ≥950 N/5cm               | ≥ 900 N/5cm              |
| <b>Tear</b>            | Warp               | ≥120 N                           | ≥120 N                   | ≥160 N                   |
| (ISO 4674)             | Weft               | ≥ 85 N                           | ≥ 70 N                   | ≥ 45 N                   |
| <b>Packing</b>         |                    | 32.8 yards                       | 32.8 yards               | 32.8 yards               |
| (Roll Length)          |                    | 30 lm                            | 30 lm                    | 30 lm                    |

## Thermal and Optical Factors

| Color | Side | Fabric Properties |    |    |         |    | Fabric & Glass     |      |
|-------|------|-------------------|----|----|---------|----|--------------------|------|
|       |      | Thermal           |    |    | Optical |    | SHGC % Improvement | SHGC |
|       |      | Ts                | Rs | As | Rv      | Tv |                    |      |

| Recommended Comfort Classification |                      |               |               |                    |
|------------------------------------|----------------------|---------------|---------------|--------------------|
| Thermal Control                    | Visual               |               |               |                    |
|                                    | Daylight Utilization | Glare Control | Night Privacy | Outward Visibility |

### Maze

|                 |    |    |    |    |    |     |      |
|-----------------|----|----|----|----|----|-----|------|
| 0030 Linen      | 19 | 59 | 22 | 66 | 15 | 46% | 0.26 |
| 0031 Black      | 10 | 37 | 53 | 43 | 14 | 42% | 0.28 |
| 0032 Sand*Pearl | 17 | 58 | 25 | 62 | 14 | 46% | 0.26 |
| 0101 White      | 19 | 71 | 10 | 79 | 16 | 48% | 0.25 |
| 0103 Pearl      | 18 | 56 | 26 | 63 | 15 | 46% | 0.26 |
| 0107 Sand       | 18 | 60 | 22 | 61 | 13 | 46% | 0.26 |

|   |   |   |   |   |
|---|---|---|---|---|
| 2 | 2 | 2 | 2 | 2 |
| 2 | 2 | 3 | 2 | 2 |
| 2 | 2 | 2 | 2 | 2 |
| 2 | 2 | 2 | 2 | 2 |
| 2 | 2 | 2 | 2 | 2 |
| 2 | 2 | 2 | 2 | 2 |

### Viewscreen

|            |    |    |    |    |    |     |      |
|------------|----|----|----|----|----|-----|------|
| 0084 White | 32 | 56 | 12 | 65 | 30 | 46% | 0.26 |
| 0085 Beige | 32 | 37 | 31 | 43 | 29 | 42% | 0.28 |
| 0086 Black | 18 | 8  | 74 | 10 | 18 | 38% | 0.30 |
| 0087 Grey  | 17 | 13 | 70 | 22 | 17 | 38% | 0.30 |
| 0088 Brown | 20 | 14 | 66 | 16 | 20 | 38% | 0.30 |

|   |   |   |   |   |
|---|---|---|---|---|
| 2 | 2 | 0 | 1 | 2 |
| 2 | 2 | 0 | 1 | 2 |
| 2 | 2 | 1 | 1 | 3 |
| 2 | 2 | 1 | 1 | 3 |
| 2 | 2 | 1 | 1 | 3 |

### Mocha

|              |    |    |    |    |    |     |      |
|--------------|----|----|----|----|----|-----|------|
| 0074 Papyrus | 32 | 58 | 10 | 65 | 29 | 46% | 0.26 |
| 0075 Tapioca | 26 | 44 | 30 | 51 | 23 | 44% | 0.27 |
| 0078 Safari  | 18 | 36 | 46 | 43 | 13 | 42% | 0.28 |
| 0079 Cement  | 26 | 30 | 44 | 37 | 23 | 42% | 0.28 |
| 0080 Otter   | 18 | 25 | 57 | 32 | 16 | 40% | 0.29 |
| 0082 Dune    | 19 | 24 | 57 | 31 | 16 | 40% | 0.29 |

|   |   |   |   |   |
|---|---|---|---|---|
| 2 | 2 | 2 | 1 | 2 |
| 2 | 2 | 2 | 1 | 2 |
| 2 | 2 | 1 | 1 | 2 |
| 2 | 2 | 2 | 1 | 2 |
| 2 | 2 | 1 | 1 | 2 |
| 2 | 2 | 1 | 1 | 2 |

### Lausanne

|                  |    |    |    |    |    |     |      |
|------------------|----|----|----|----|----|-----|------|
| 0185 White*Linen | 32 | 56 | 12 | 61 | 28 | 46% | 0.26 |
| 0187 White*White | 34 | 57 | 9  | 63 | 31 | 46% | 0.26 |
| 0189 White*Sand  | 29 | 50 | 21 | 53 | 25 | 44% | 0.27 |
| 0191 White*Pearl | 30 | 52 | 18 | 57 | 26 | 46% | 0.26 |

|   |   |   |   |   |
|---|---|---|---|---|
| 2 | 2 | 1 | 2 | 1 |
| 2 | 2 | 1 | 2 | 1 |
| 2 | 2 | 2 | 2 | 2 |
| 2 | 2 | 2 | 2 | 2 |

### Champlain

|                  |    |    |    |    |    |     |      |
|------------------|----|----|----|----|----|-----|------|
| 0101 White*White | 26 | 71 | 3  | 75 | 22 | 48% | 0.25 |
| 0103 White*Pearl | 24 | 51 | 25 | 58 | 22 | 40% | 0.29 |
| 0104 White*Black | 19 | 23 | 58 | 30 | 20 | 40% | 0.29 |
| 0105 White*Grey  | 28 | 41 | 31 | 48 | 19 | 44% | 0.27 |
| 0106 White*Brown | 21 | 32 | 47 | 39 | 18 | 42% | 0.28 |
| 0107 White*Sand  | 25 | 54 | 21 | 61 | 20 | 46% | 0.26 |

|   |   |   |   |   |
|---|---|---|---|---|
| 2 | 2 | 0 | 0 | 3 |
| 2 | 2 | 0 | 0 | 3 |
| 2 | 2 | 1 | 0 | 3 |
| 2 | 2 | 1 | 0 | 3 |
| 2 | 2 | 1 | 0 | 3 |
| 2 | 2 | 0 | 0 | 3 |

### Candela

|                  |    |    |    |    |    |     |      |
|------------------|----|----|----|----|----|-----|------|
| 0113 White*White | 35 | 50 | 15 | 66 | 33 | 44% | 0.27 |
| 0116 White*Black | 21 | 36 | 43 | 41 | 20 | 42% | 0.28 |
| 0119 White*Sand  | 33 | 39 | 28 | 55 | 30 | 42% | 0.28 |

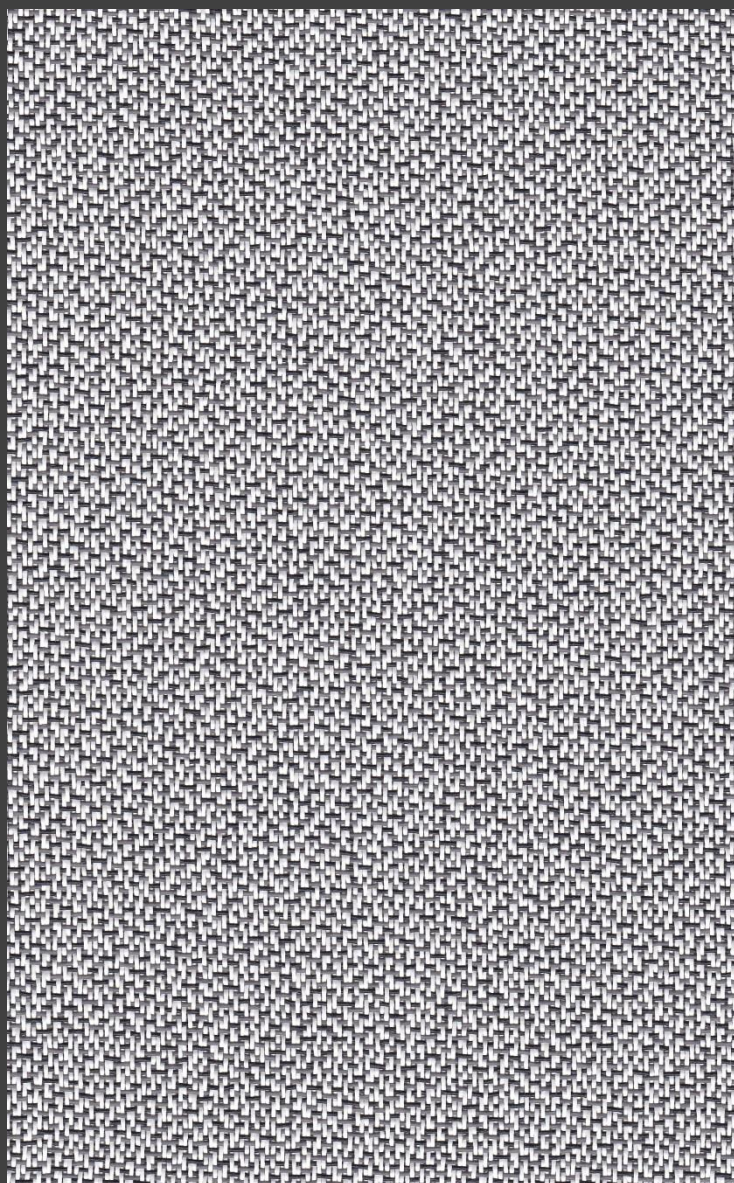
|   |   |   |   |   |
|---|---|---|---|---|
| 2 | 2 | 1 | 1 | 2 |
| 2 | 2 | 1 | 1 | 2 |
| 2 | 2 | 1 | 1 | 2 |

Ts (Solar transmittance): Proportion of solar energy transmitted through the fabric. Rs (Solar reflectance): Proportion of solar radiation reflected by the fabric. As (Solar absorptance): Proportion of solar radiation absorbed by the fabric. Tv (Visible light transmittance): Total percentage of light radiation through the fabric over a wavelength of 380 to 780 nm. Rv (visible light reflectance): Total percentage of light radiation reflected by the fabric over a wavelength of 380 to 780 nm. SHGC (Total solar factor): Solar energy which actually penetrates into a room through the blind and glazing. A low value means good thermal performance.

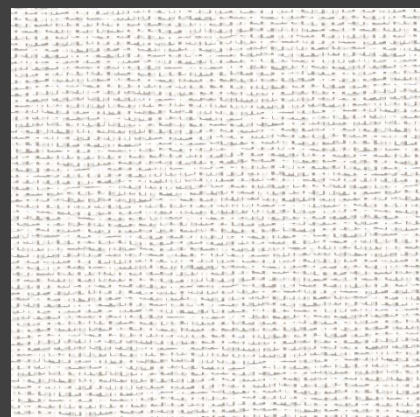
Comfort Classification According to EN14501 : 0. Very little effect 1. Little effect 2. Moderate effect 3. Good effect 4. Very good effect

## Colours

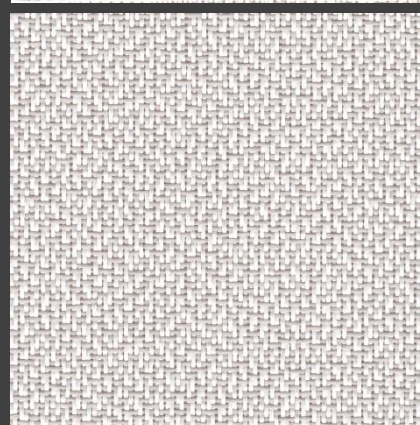
### Maze



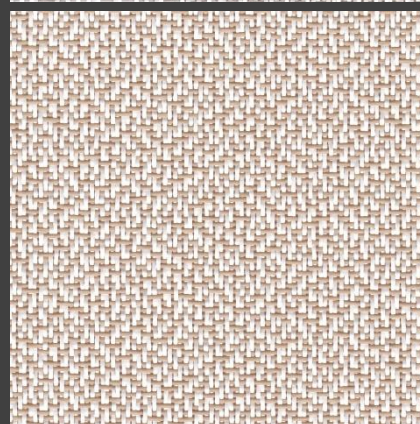
0031 Black



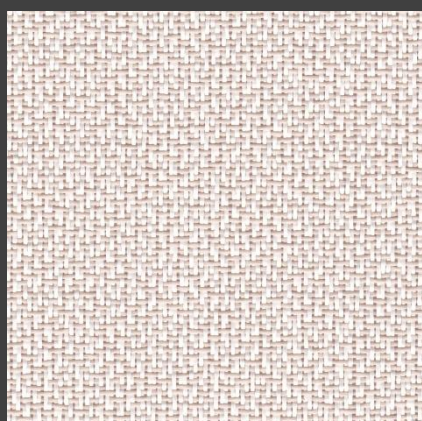
0101 White



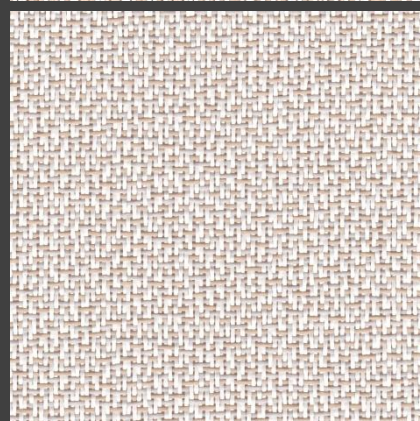
0103 Pearl



0107 Sand



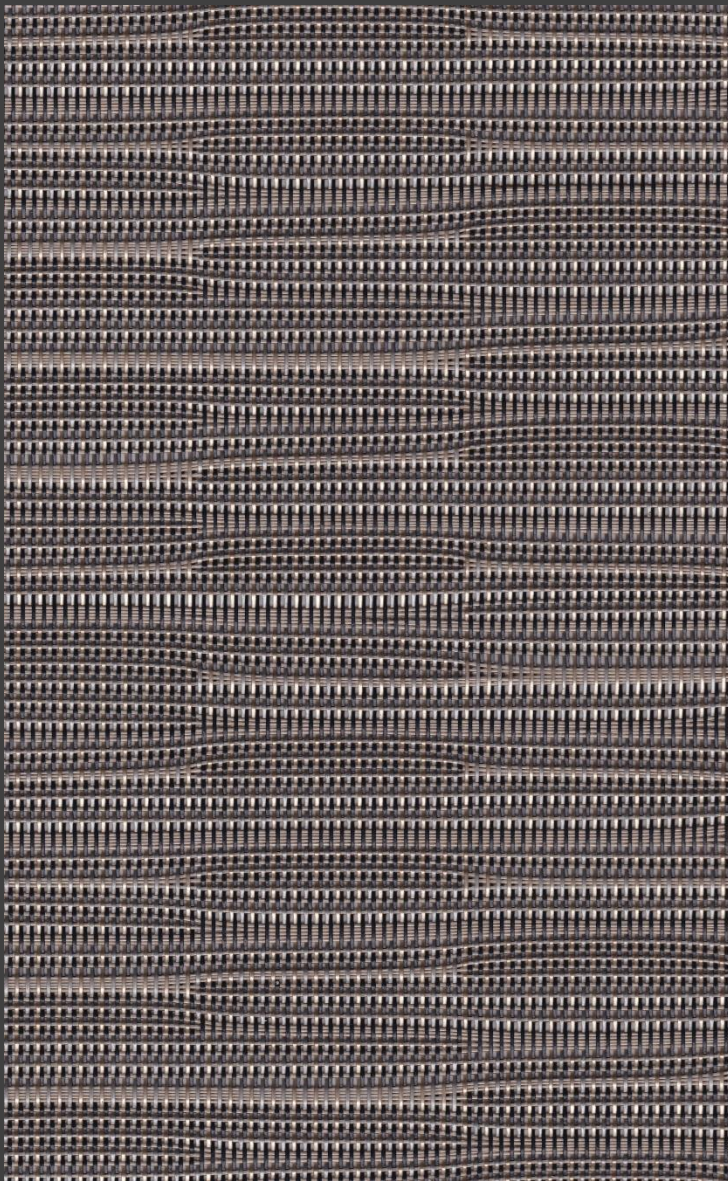
0030 Linen



0032  
Sand \* Pearl

## Colours

## Viewscreen



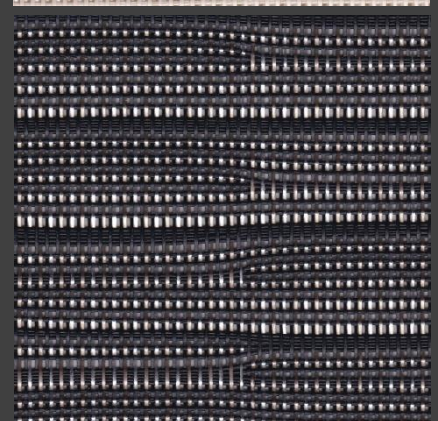
0088 Brown



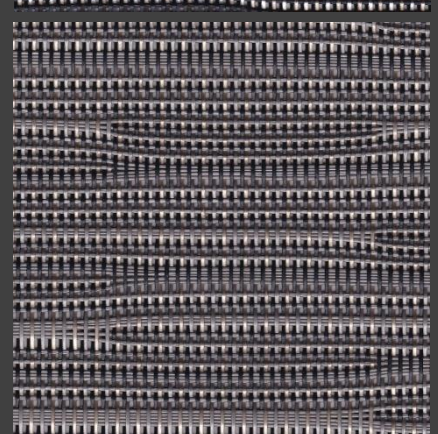
0084 White



0085 Beige



0086 Black

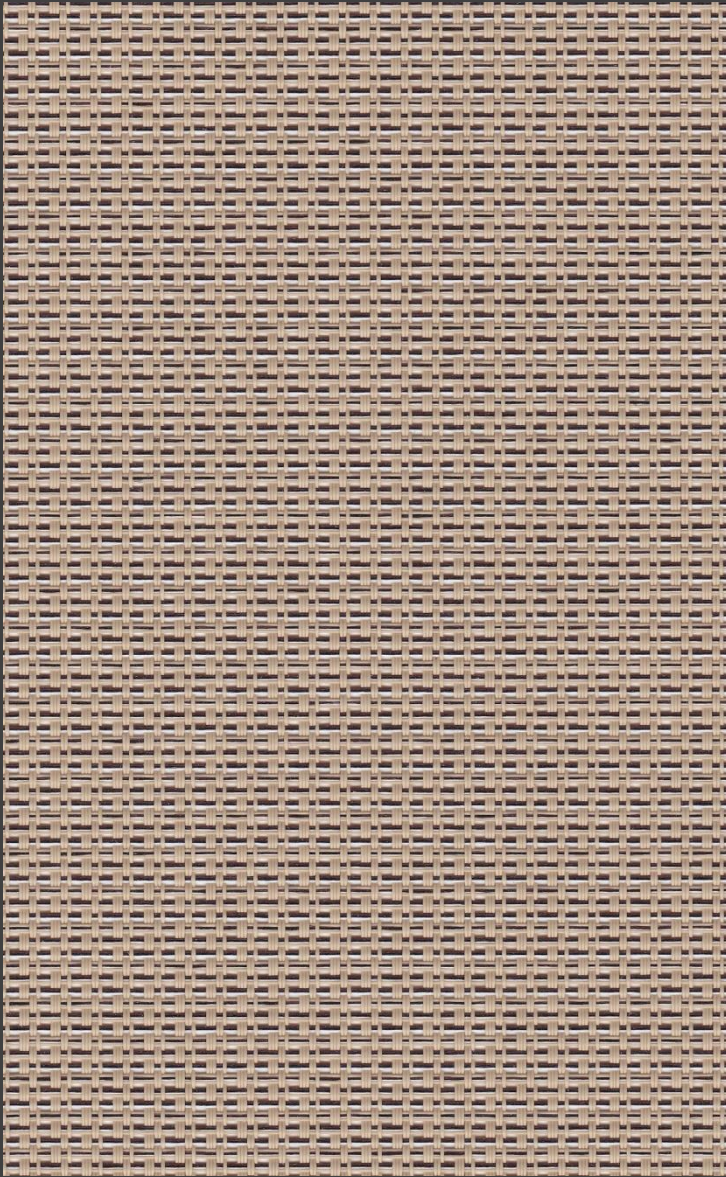


0087 Grey

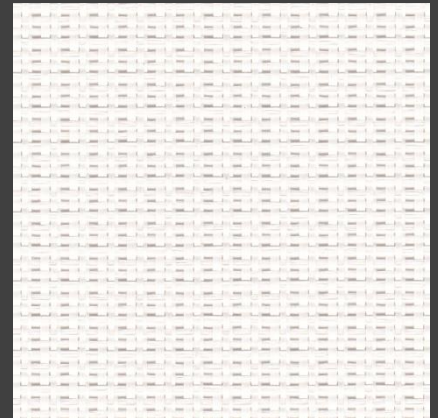
\* Colours may be slightly different from the actual ones

# Colours

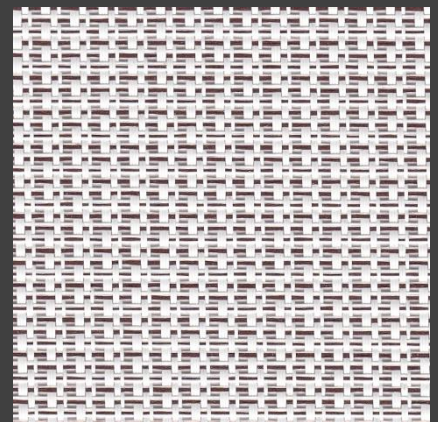
## Mocha



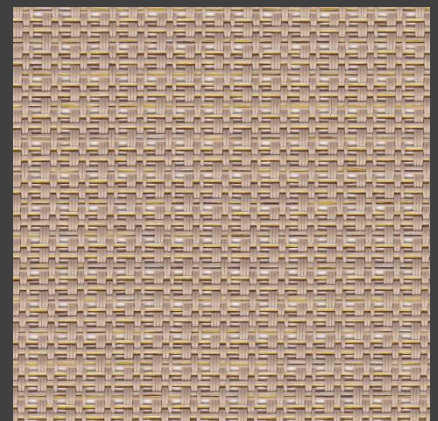
0079 Cement



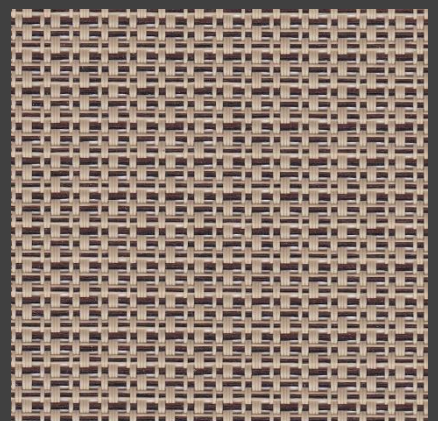
0074 Papyrus



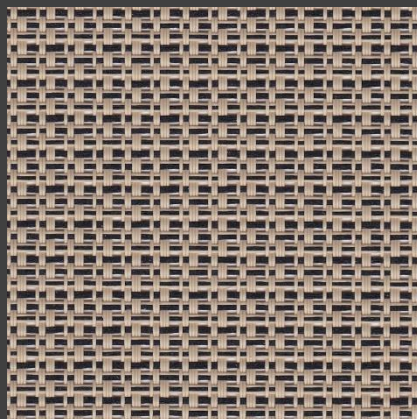
0075 Tapioca



0078 Safari



0080 Otter



0082 Dune

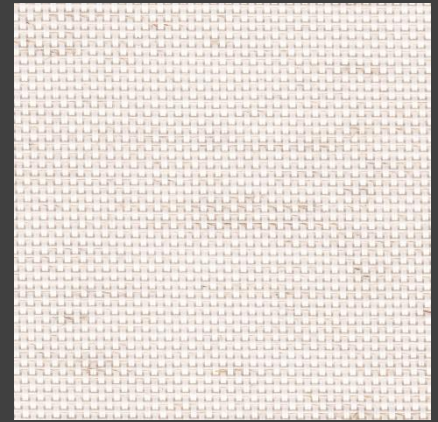
\* Colours may be slightly different from the actual ones

**Colours**

**Lausanne**



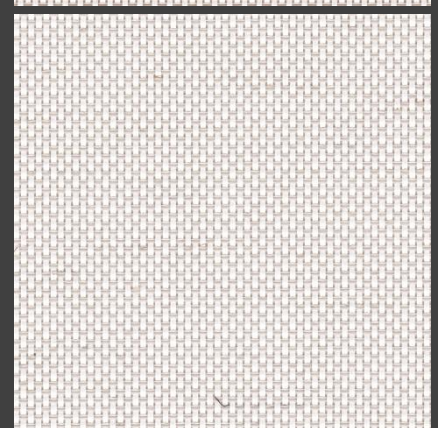
0187 White\*White



0185  
White\*Linen



0189  
White\*Sand



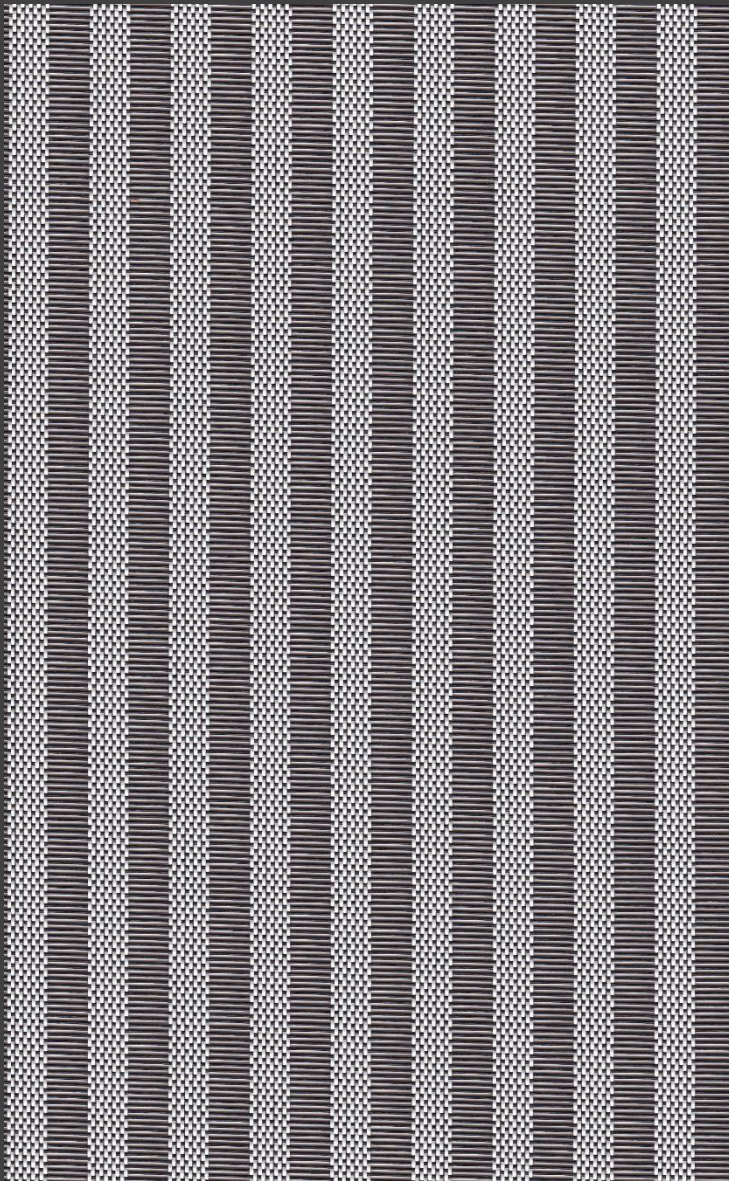
0191  
White\*Pearl

\* Colours may be slightly different from the actual ones

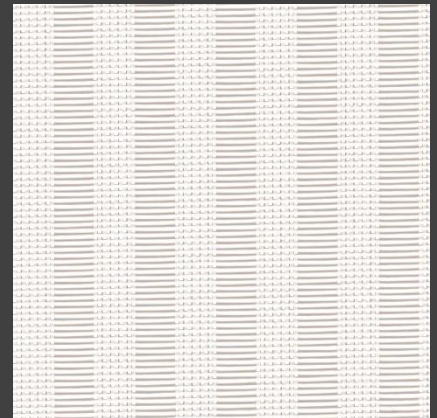


# Colours

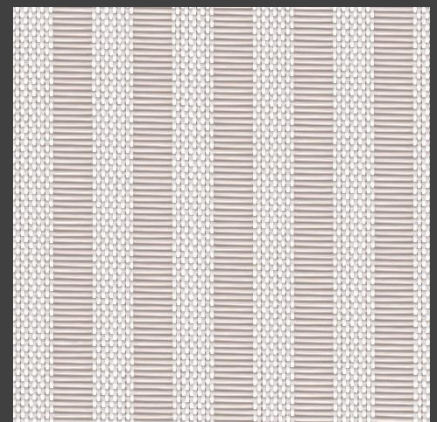
## Champlain



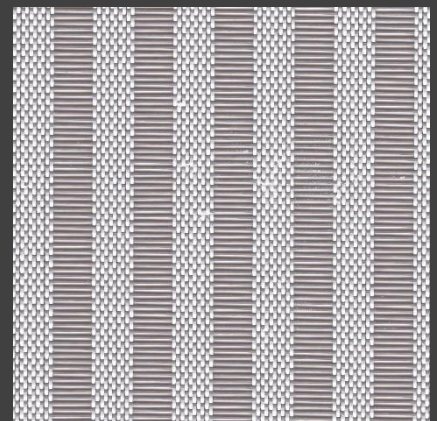
0104 White\*Black



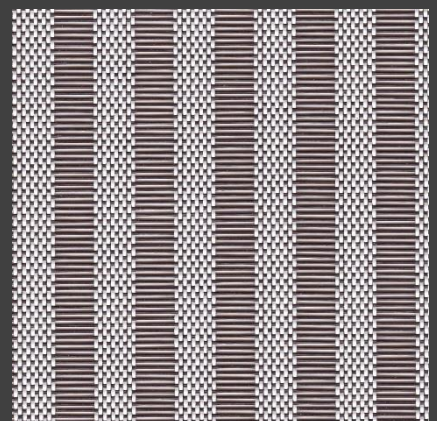
0101  
White\*White



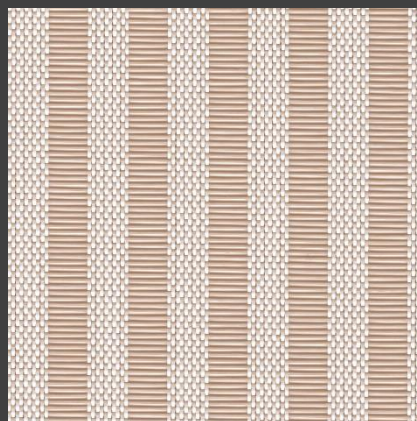
0103  
White\*Pearl



0105  
White\*Grey



0106  
White\*Brown



0107  
White\*Sand

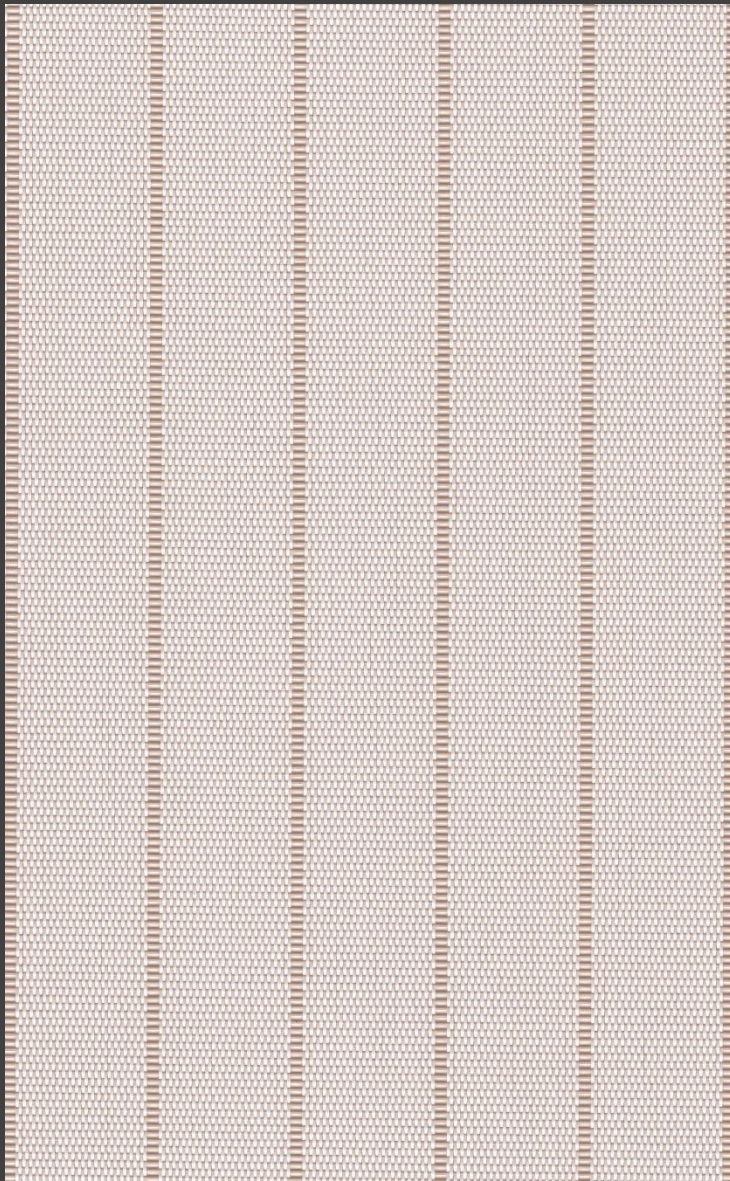
\* Colours may be slightly different from the actual ones



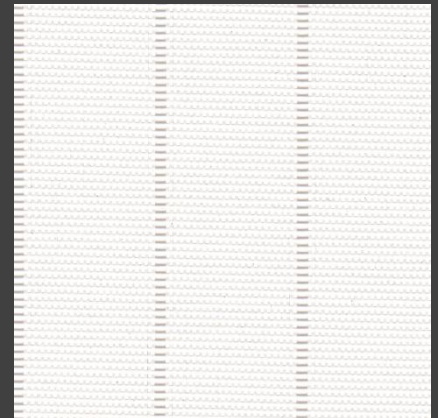
By *Hande*

## Colours

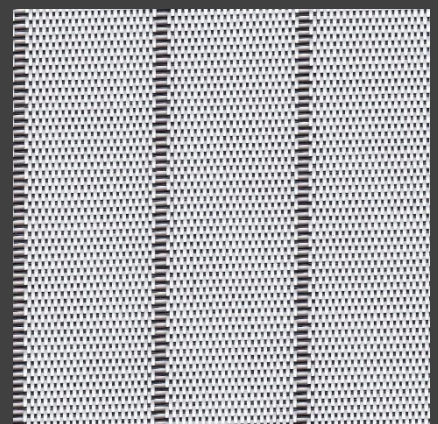
Candela



0119 White\*Sand



0113  
White\*White



0116  
White\*Black



**HanDe<sup>®</sup>**

**Hande Manufacturing(China)Co.,Ltd**

Add: No.161, Yao TianHe Street,Yong shun Avenue,Yonghe Economic Zone,  
GZ Economic&Technological Development District, Guang zhou, China

Tel: 86-20-3222888 Fax: 86-20-3222205 PostCode: 511356

Mail: info@handegroup.com.cn



[www.handegroup.com.cn](http://www.handegroup.com.cn)