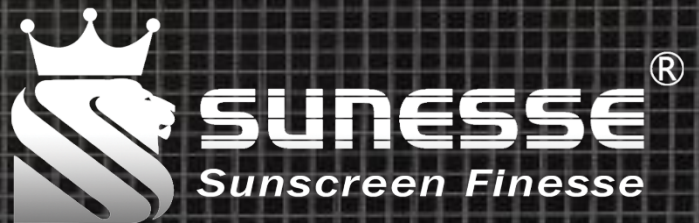


# Zebra

---

Zebra



*By HanDe*

## Product Certificate

<b>Fire, Smoke Classification</b>	FR (US) - NFPA 701 TM#1 B1(CN) - GB50222	BS (GB) - 5867 Part2 TypeB
<b>Health &amp; Safety</b>	Oeko-tex Standard 100 class IV RoHS Directive (EU)2015/863 AATCC112-2014	Greenguard® Gold EN71 Part 3:1994 GB18586 - 2001
<b>Bacterial &amp; Fungal Resistance</b>	ASTM G21-09 ASTM E 2180-07 Reduce more than 99.9% of bacteria	
<b>Colour fastness to light</b>	Grade 8 ISO105 B02:2014 ≥4.0 AATCC TM 16.3-2014; Option 3; Xenon Arc Lamp	
<b>Warranty</b>	5 Years	



## Technical Data

STYLE		Zebra	Zebra (Flax)
<b>Composition</b>		25%Polyester 75% PVC	19%Polyester 8%Flax 73% PVC
<b>Openness Factor</b>		≈65% / 0%	≈65% / 0%
<b>UV Screen</b>		Up to 99% / 35%	Up to 99% / 35%
<b>Width</b>	inch	98"–118"	98"–118"
	cm	250–300	250–300
<b>Weight</b>	oz/yd <sup>2</sup>	8.82 ± 5%	8.55 ± 5%
(ISO 2286–2)	g/m <sup>2</sup>	300 ± 5%	290 ± 5%
<b>Thickness</b>	inch	0.030 / 0.024 ± 5%	0.030 / 0.024 ± 5%
(ISO 2286–3)	mm	0.78 / 0.62 ± 5%	0.78 / 0.62 ± 5%
<b>Mechanical</b>	<b>Resistance</b>		
<b>Breaking</b>	Warp	≥2250 N/5cm	≥2250 N/5cm
(ISO 13934–1)	Weft	≥1470 N/5cm	≥1300 N/5cm
<b>Tear</b>	Warp	≥290 N	≥270 N
(ISO 4674)	Weft	≥235 N	≥215 N
<b>Packing</b>		32.8 yards	32.8 yards
(Roll Length)		30 lm	30 lm

## Thermal and Optical Factors

Color	Side	Fabric Properties					Fabric & Glass		Recommended Comfort Classification				
		Thermal			Optical		SHGC % Improvement	SHGC	Thermal Control	Visual			
		Ts	Rs	As	Rv	Tv				Daylight Utilization	Glare Control	Night Privacy	Outward Visibility

### Zebra

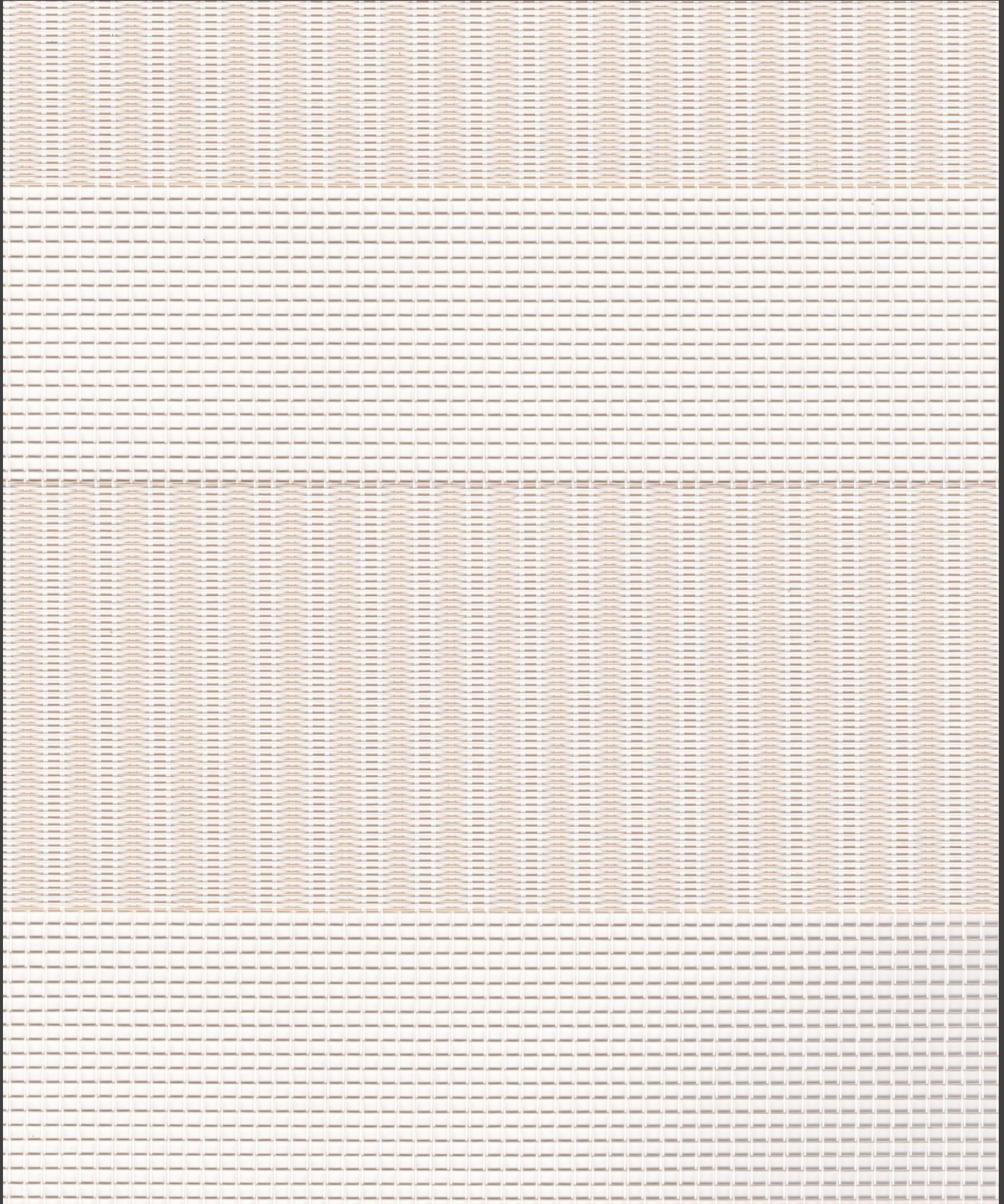
0101 White*White	A	70	19	11	21	69	57%	0.23	2	2	2	3	2
	B	18	64	18	71	14							
0102 White*Linen	A	70	18	12	20	69	47%	0.25	2	2	2	3	2
	B	13	52	35	55	8							
0312 White/White*Grey	A	70	15	15	16	68	44%	0.26	2	2	2	3	2
	B	9	46	45	50	6							
0313 White/White*Linen	A	70	19	11	21	69	52%	0.24	2	2	2	3	2
	B	15	59	26	64	11							
0326 White/White*Flax	A	67	21	12	22	66	52%	0.24	2	2	2	3	2
	B	17	62	21	65	15							

Ts (Solar transmittance): Proportion of solar energy transmitted through the fabric. Rs (Solar reflectance): Proportion of solar radiation reflected by the fabric. As (Solar absorptance): Proportion of solar radiation absorbed by the fabric. Tv (Visible light transmittance): Total percentage of light radiation through the fabric over a wavelength of 380 to 780 nm. Rv (visible light reflectance): Total percentage of light radiation reflected by the fabric over a wavelength of 380 to 780 nm. SHGC (Total solar factor): Solar energy which actually penetrates into a room through the blind and glazing. A low value means good thermal performance.

Comfort Classification According to EN14501 : 0. Very little effect    1. Little effect    2. Moderate effect    3. Good effect    4. Very good effect

## Openness Factor

0313 White/White\*Linene

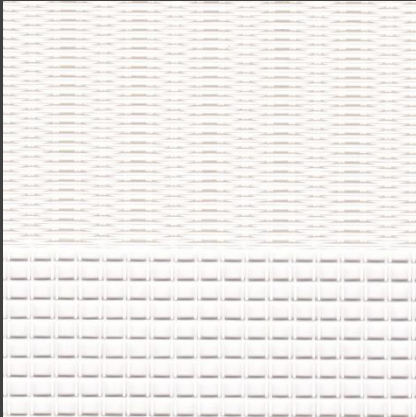


Zebra

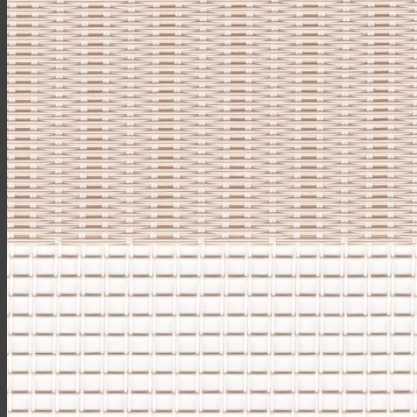
Openness Factor may be slightly different from the actual ones

## Colours

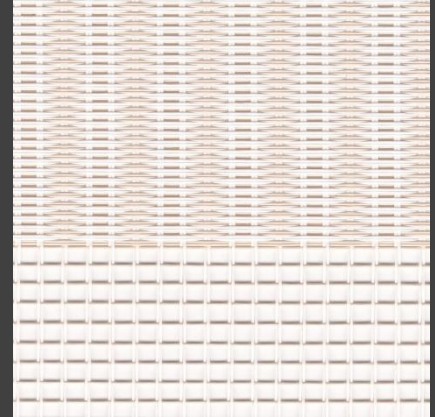
### Zebra



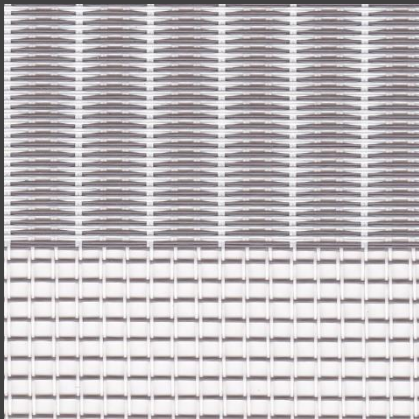
0101 White \* White



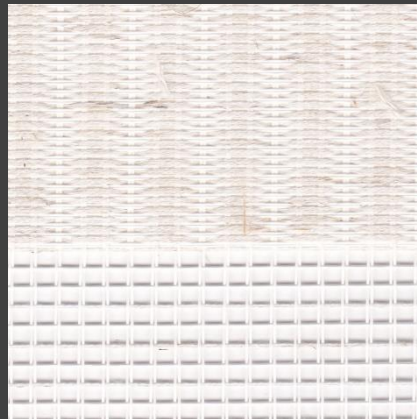
0102 White \* Linen



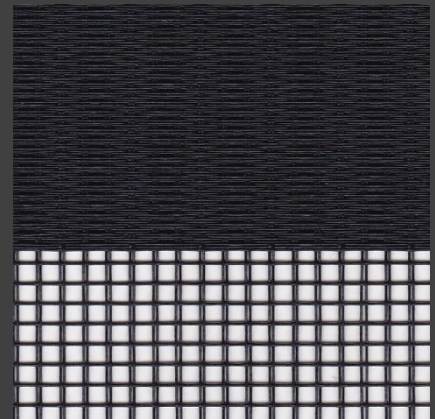
0313 White/Linen \* Linen



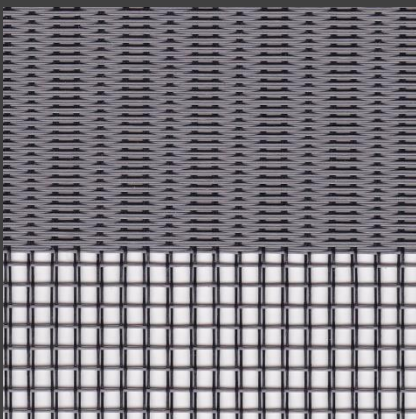
0105 White \* Grey



0326 White/White \* Flax



0404 Black \* Black



0405 Black \* Grey



**HanDe<sup>®</sup>**

**Hande Manufacturing(China)Co.,Ltd**

Add: No.161, Yao TianHe Street, Yong shun Avenue, Yonghe Economic Zone,  
GZ Economic&Technological Development District, Guang zhou, China

Tel: 86-20-32222888 Fax: 86-20-32222205 PostCode: 511356

Mail: info@handegroup.com.cn



[www.handegroup.com.cn](http://www.handegroup.com.cn)