

External Basket

EB3 / EB5



SUNESSE[®]
Sunscreen Finesse

By HanDe

Product Certificate

Fire, Smoke Classification	FR (US) - NFPA 701 TM#1 B1(CN) - GB50222	BS (GB) - 5867 Part2 TypeB
Health & Safety	Oeko-tex Standard 100 class IV RoHS Directive (EU)2015/863 AATCC112-2014	Greenguard® Gold EN71 Part 3:1994 GB18586 - 2001
Bacterial & Fungal Resistance	ASTM G21-09 ASTM E 2180-07 Reduce more than 99.9% of bacteria	
Colour fastness to light	Grade 8 ISO105 B02:2014 ≥4.0 AATCC TM 16.3-2014; Option 3; Xenon Arc Lamp	
Warranty	5 Years	



Technical Data

STYLE		B3	B5
Composition		26%Polyester 74% PVC	26%Polyester 74% PVC
Openness Factor		≈3%	≈5%
UV Screen		Up to 97%	Up to 94%
Width	inch	98"–118"	98"–118"
	cm	250–300	250–300
Weight	oz/yd ²	16.76 ± 5%	16.02 ± 5%
	(ISO 2286–2) g/m ²	570 ± 5%	545 ± 5%
Thickness	inch	0.031 ± 5%	0.030 ± 5%
	(ISO 2286–3) mm	0.80 ± 5%	0.75 ± 5%
Mechanical		Resistance	
Breaking	Warp	≥2100 N/5cm	≥2150 N/5cm
	(ISO 13934–1) Weft	≥2050 N/5cm	≥2000 N/5cm
Tear	Warp	≥220 N	≥200 N
	(ISO 4674) Weft	≥180 N	≥190 N
Packing		32.8 yards	32.8 yards
(Roll Length)		30 lm	30 lm

Thermal and Optical Factors

Color	Fabric Properties					Fabric & Glass	
	Thermal			Optical		SHGC % Improvement	SHGC
	Ts	Rs	As	Rv	Tv		

Recommended Comfort Classification				
Thermal Control	Visual			
	Daylight Utilization	Glare Control	Night Privacy	Outward Visibility

External Basket 3%

0101 White*White	17	67	16	73	14	55%	0.22
0102 White*Linen	14	59	27	63	11	48%	0.23
0103 White*Pearl	13	52	35	57	10	44%	0.25
0105 White*Grey	9	41	50	45	7	36%	0.27
0107 White*Sand	13	52	35	54	10	42%	0.25
0403 Black*Pearl	6	15	79	17	5	20%	0.34
0404 Black*Black	5	3	92	3	5	13%	0.38
0404 Black*Grey	5	10	85	10	5	16%	0.36
0406 Black*Brown	5	6	89	6	5	14%	0.37

2	2	1	2	1
2	2	1	2	1
2	2	1	2	1
2	1	1	2	2
2	2	1	2	1
2	1	3	2	2
1	1	3	2	2
1	1	3	2	2
1	1	3	2	2

External Basket 5%

0101 White*White	23	66	11	72	20	54%	0.25
0102 White*Linen	16	58	26	61	13	46%	0.24
0103 White*Pearl	15	50	35	55	12	42%	0.26
0105 White*Grey	11	39	50	42	9	34%	0.28
0107 White*Sand	14	49	37	51	11	40%	0.27
0403 Black*Pearl	8	16	76	18	8	20%	0.35
0404 Black*Black	7	3	90	3	7	13%	0.38
0404 Black*Grey	6	11	83	10	6	16%	0.36
0406 Black*Brown	7	6	87	6	7	14%	0.37

2	2	0	1	1
2	2	0	1	1
2	2	0	1	2
2	2	0	1	2
2	2	0	1	2
1	1	1	1	3
1	1	1	1	3
1	1	1	1	3
1	1	1	1	3

Ts (Solar transmittance): Proportion of solar energy transmitted through the fabric. Rs (Solar reflectance): Proportion of solar radiation reflected by the fabric. As (Solar absorptance): Proportion of solar radiation absorbed by the fabric. Tv (Visible light transmittance): Total percentage of light radiation through the fabric over a wavelength of 380 to 780 nm. Rv (visible light reflectance): Total percentage of light radiation reflected by the fabric over a wavelength of 380 to 780 nm. SHGC (Total solar factor): Solar energy which actually penetrates into a room through the blind and glazing. A low value means good thermal performance.

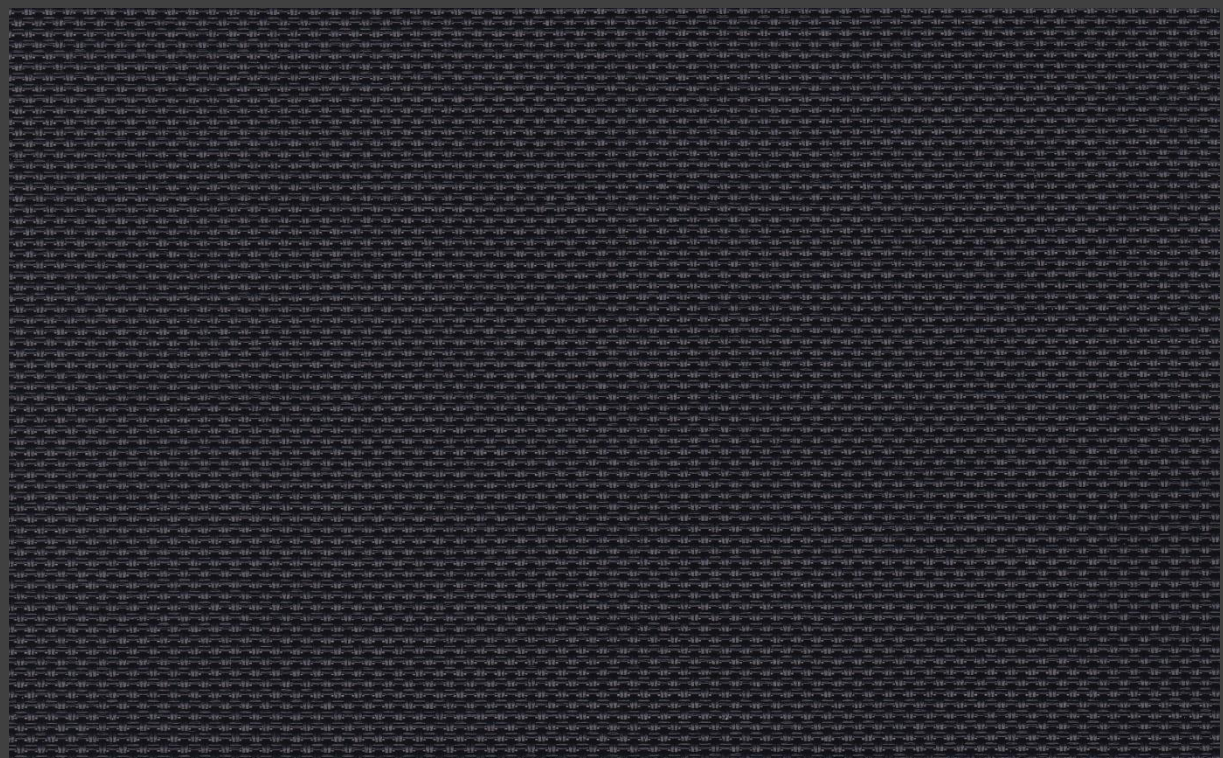
Comfort Classification According to EN14501: 0. Very little effect 1. Little effect 2. Moderate effect 3. Good effect 4. Very good effect

Openness Factor

0404 Black*Black



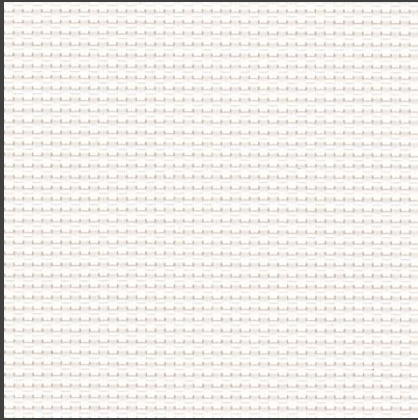
EB 3%



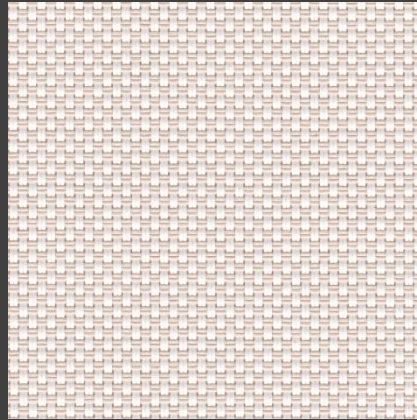
EB 5%

Colours

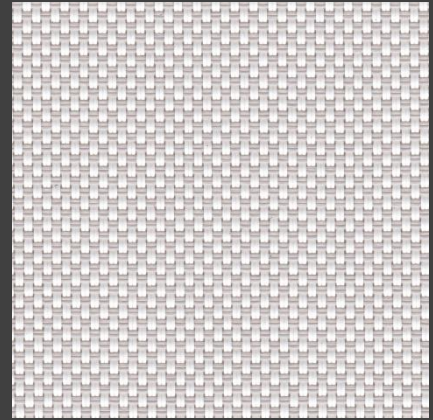
EB 3%



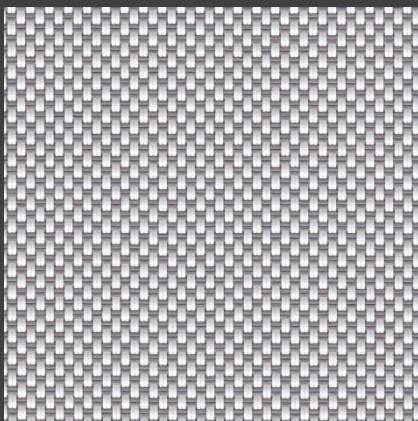
0101 White * White



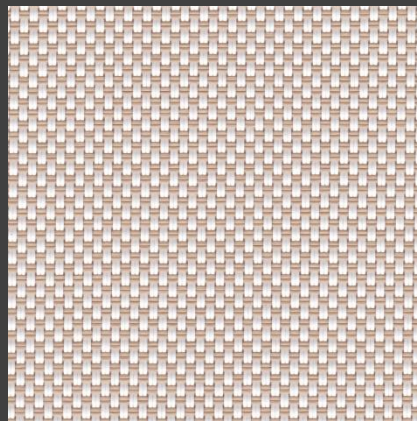
0102 White * Linen



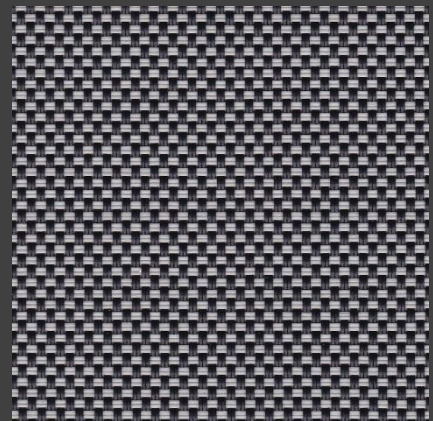
0103 White * Pearl



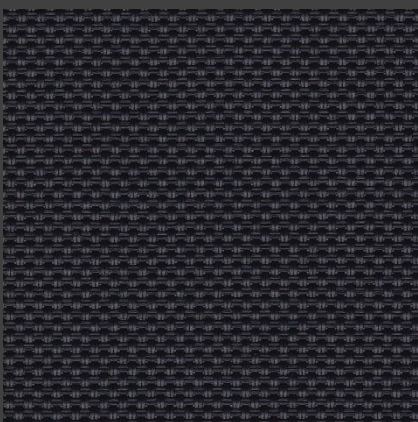
0105 White * Grey



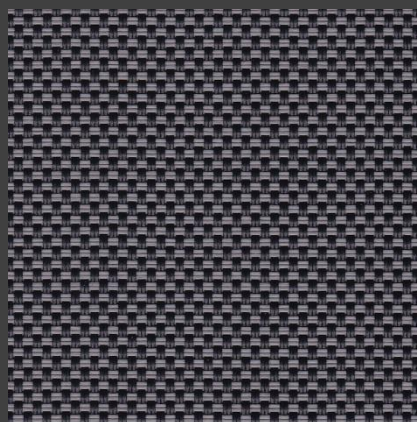
0107 White * Sand



0403 Black * Pearl



0404 Black * Black



0404 Black * Grey



0406 Black * Brown

* Colours may be slightly different from the actual ones



HanDe®

Hande Manufacturing(China)Co.,Ltd

Add: No.161, Yao TianHe Street,Yong shun Avenue,Yonghe Economic Zone,
GZ Economic&Technological Development District, Guang zhou, China

Tel: 86-20-3222888 Fax: 86-20-3222205 PostCode: 511356

Mail: info@handegroup.com.cn



www.handegroup.com.cn