

Kiev

Kiev



By HanDe

Product Certificate

Fire, Smoke Classification	FR (US) - NFPA 701 TM#1 B1(CN) - GB50222	BS (GB) - 5867 Part2 TypeB
Health & Safety	Oeko-tex Standard 100 class IV RoHS Directive (EU)2015/863 AATCC112-2014	Greenguard® Gold EN71 Part 3:1994 GB18586 - 2001
Bacterial & Fungal Resistance	ASTM G21-09 ASTM E 2180-07 Reduce more than 99.9% of bacteria	
Colour fastness to light	Grade 8 ISO105 B02:2014 ≥4.0 AATCC TM 16.3-2014; Option 3; Xenon Arc Lamp	
Warranty	5 Years	



Technical Data

STYLE		Kiev
Composition		25%Polyester 75% PVC
Openness Factor		≈ 3%
UV Screen		Up to 97%
Width	inch	98"–118"
	cm	250–300
Weight	oz/yd ²	14.26 ± 5%
(ISO 2286–2)	g/m ²	485 ± 5%
Thickness	inch	0.028 ± 5%
(ISO 2286–3)	mm	0.70 ± 5%
Mechanical	Resistance	
Breaking	Warp	≥1800 N/5cm
(ISO 13934–1)	Weft	≥1550 N/5cm
Tear	Warp	≥105 N
(ISO 4674)	Weft	≥ 85 N
Packing		32.8 yards
(Roll Length)		30 Im

Thermal and Optical Factors

Color	Fabric Properties					Fabric & Glass	
	Thermal			Optical		SHGC % Improvement	SHGC
	Ts	Rs	As	Rv	Tv		

Recommended Comfort Classification				
Thermal Control	Visual			
	Daylight Utilization	Glare Control	Night Privacy	Outward Visibility

Kiev 3%

0101 White*White	16	65	19	72	13	55%	0.21
0102 White*Linen	15	59	26	63	11	49%	0.23
0103 White*Pearl	13	52	35	58	10	45%	0.25
0105 White*Grey	9	42	49	47	6	38%	0.26
0107 White*Sand	13	52	35	55	9	43%	0.25

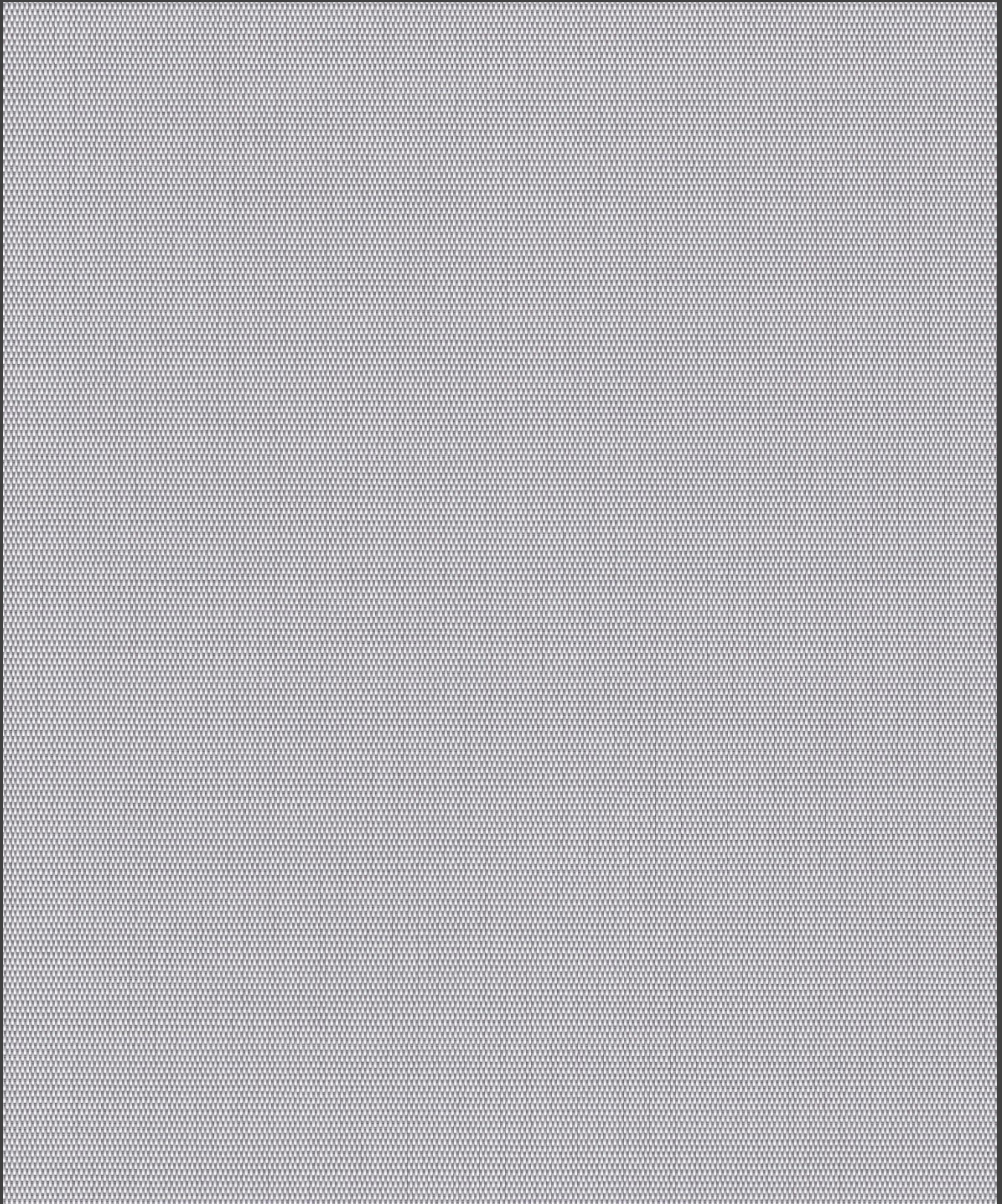
2	2	1	2	0
2	2	1	2	0
2	2	1	2	0
2	2	1	2	1
2	2	1	2	0

Ts (Solar transmittance): Proportion of solar energy transmitted through the fabric. Rs (Solar reflectance): Proportion of solar radiation reflected by the fabric. As (Solar absorptance): Proportion of solar radiation absorbed by the fabric. Tv (Visible light transmittance): Total percentage of light radiation through the fabric over a wavelength of 380 to 780 nm. Rv (visible light reflectance): Total percentage of light radiation reflected by the fabric over a wavelength of 380 to 780 nm. SHGC (Total solar factor): Solar energy which actually penetrates into a room through the blind and glazing. A low value means good thermal performance.

Comfort Classification According to EN14501 : 0. Very little effect 1. Little effect 2. Moderate effect 3. Good effect 4. Very good effect

Openness Factor

0105 White * Grey

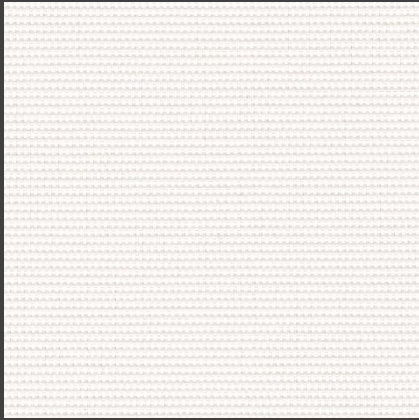


Kiev 3%

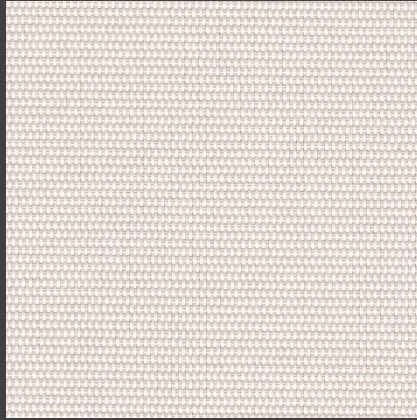
* Openness Factor may be slightly different from the actual ones

Colors

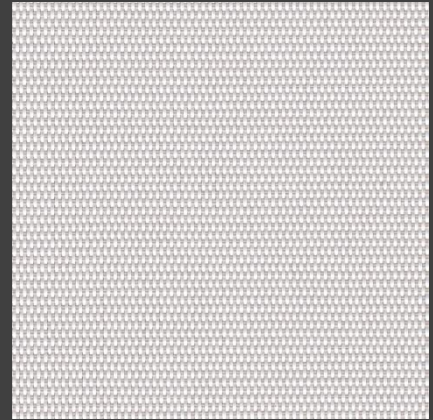
Kiev 3%



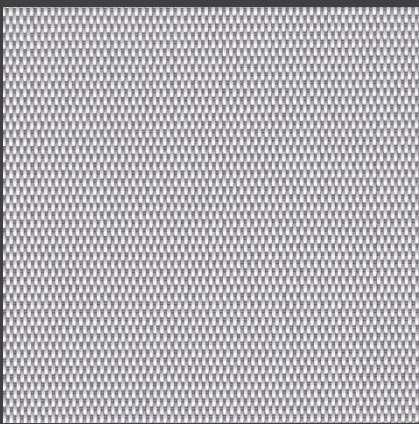
0101 White * White



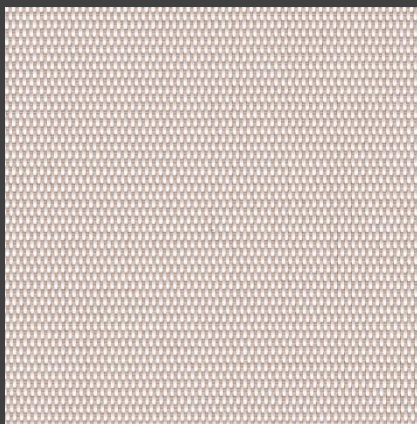
0102 White * Linen



0103 White * Pearl



0105 White * Grey



0107 White * Sand



HanDe[®]

Hande Manufacturing(China)Co.,Ltd

Add: No.161, Yao TianHe Street,Yong shun Avenue,Yonghe Economic Zone,
GZ Economic&Technological Development District, Guang zhou, China

Tel: 86-20-3222888 Fax: 86-20-3222205 PostCode: 511356

Mail: info@handegroup.com.cn



www.handegroup.com.cn