

# Basket

---

B1 / B3 / B5 / B10



*By HanDe*

# Product Certificate

<b>Fire, Smoke Classification</b>	FR (US) - NFPA 701 TM#1 B1(CN) - GB50222	BS (GB) - 5867 Part2 TypeB
<b>Health &amp; Safety</b>	Oeko-tex Standard 100 class IV RoHS Directive (EU)2015/863 AATCC112-2014	Greenguard® Gold EN71 Part 3:1994 GB18586 - 2001
<b>Bacterial &amp; Fungal Resistance</b>	ASTM G21-09 ASTM E 2180-07 Reduce more than 99.9% of bacteria	
<b>Colour fastness to light</b>	Grade 8 ISO105 B02:2014 ≥4.0 AATCC TM 16.3-2014; Option 3; Xenon Arc Lamp	
<b>Warranty</b>	5 Years	



## Technical Data

STYLE		B1	B3	B5	B10
<b>Composition</b>		22%Polyester 78% PVC	22%Polyester 78% PVC	22%Polyester 78% PVC	22%Polyester 78% PVC
<b>Openness Factor</b>		≈1%	≈3%	≈5%	≈10%
<b>UV Screen</b>		Up to 99%	Up to 97%	Up to 94%	Up to 89%
<b>Width</b>	inch	98"–118"	98"–118"	98"–118"	98"–118"
	cm	250–300	250–300	250–300	250–300
<b>Weight</b>	oz/yd <sup>2</sup>	14.55±5%	14.26 ± 5%	13.52 ± 5%	12.05±5%
	(ISO 2286–2) g/m <sup>2</sup>	495 ± 5%	485 ± 5%	460 ± 5%	410 ± 5%
<b>Thickness</b>	inch	0.028 ± 5%	0.027 ± 5%	0.024 ± 5%	0.025 ± 5%
	(ISO 2286–3) mm	0.72 ± 5%	0.70 ± 5%	0.64 ± 5%	0.60 ± 5%
<b>Mechanical</b>	<b>Resistance</b>				
<b>Breaking</b> (ISO 13934–1)	Warp	≥1900 N/5cm	≥1600 N/5cm	≥1550 N/5cm	≥1300 N/5cm
	Weft	≥1100 N/5cm	≥1500 N/5cm	≥1300 N/5cm	≥1200 N/5cm
<b>Tear</b> (ISO 4674)	Warp	≥110 N	≥130 N	≥100 N	≥110 N
	Weft	≥ 60 N	≥ 90 N	≥ 80 N	≥ 90 N
<b>Packing</b> (Roll Length)		32.8 yards 30 lm	32.8 yards 30 lm	32.8 yards 30 lm	32.8 yards 30 lm

## Thermal and Optical Factors

Color	Fabric Properties					Fabric & Glass	
	Thermal			Optical		SHGC % Improvement	SHGC
	Ts	Rs	As	Rv	Tv		

Recommended Comfort Classification				
Thermal Control	Visual			
	Daylight Utilization	Glare Control	Night Privacy	Outward Visibility

### Basket 1%

0101 White*White	15	72	13	74	13	56%	0.21
0102 White*Linen	17	65	18	68	13	53%	0.23
0103 White*Pearl	17	60	23	62	14	47%	0.24
0104 White*Black	3	25	72	35	3	40%	0.28
0105 White*Grey	8	45	47	50	5	40%	0.25
0107 White*Sand	12	55	33	59	8	46%	0.23
0403 Black*Pearl	0	10	89	12	0	18%	0.34
0404 Black*Black	0	3	97	3	0	13%	0.36
0406 Black*Brown	1	5	94	5	1	14%	0.35

2	2	1	2	1
2	2	1	2	1
2	2	1	2	1
2	1	2	2	1
2	1	2	2	1
2	0	3	3	1
1	0	3	3	1
1	0	3	3	1

### Basket 3%

0101 White*White	17	71	12	74	24	46%	0.26
0102 White*Linen	20	66	14	74	16	48%	0.25
0103 White*Pearl	15	58	27	66	12	46%	0.26
0104 White*Black	8	26	66	40	7	40%	0.29
0105 White*Grey	9	49	42	55	7	44%	0.27
0107 White*Sand	18	59	23	62	13	46%	0.26
0403 Black*Pearl	6	14	80	15	6	38%	0.30
0404 Black*Black	5	3	92	3	5	35%	0.31
0406 Black*Brown	6	8	86	7	5	38%	0.30

2	2	1	2	1
2	2	1	2	1
2	2	1	2	1
2	1	1	2	1
2	1	1	2	1
2	1	3	2	2
1	1	3	2	2
1	1	3	2	2

### Basket 5%

0101 White*White	19	72	9	80	15	48%	0.25
0102 White*Linen	22	63	15	71	18	48%	0.25
0103 White*Pearl	18	57	25	65	15	46%	0.26
0104 White*Black	12	27	61	45	11	40%	0.29
0105 White*Grey	12	44	44	51	10	44%	0.27
0107 White*Sand	20	59	21	63	16	46%	0.26
0403 Black*Pearl	10	14	76	17	10	38%	0.30
0404 Black*Black	7	3	90	3	7	35%	0.31
0406 Black*Brown	8	5	87	6	8	35%	0.31

2	2	0	1	1
2	2	0	1	1
2	2	0	1	2
2	1	0	1	2
2	1	0	1	2
2	1	0	1	2
1	1	1	1	3
1	1	1	1	3
1	1	1	1	3

### Basket 10%

0101 White*White	23	66	11	75	19	48%	0.25
0102 White*Linen	25	60	15	68	21	46%	0.26
0103 White*Pearl	24	52	24	60	21	46%	0.26
0104 White*Black	19	23	58	47	18	40%	0.29
0105 White*Grey	18	43	39	50	15	44%	0.27
0107 White*Sand	26	55	19	60	21	46%	0.26
0403 Black*Pearl	16	14	70	17	15	38%	0.30
0404 Black*Black	13	3	84	3	13	35%	0.31
0406 Black*Brown	14	7	79	6	13	38%	0.30

2	2	0	0	2
2	2	0	1	2
2	2	0	1	2
2	2	0	1	3
2	2	0	1	3
2	2	0	1	3
1	1	1	1	3
1	1	1	1	3
1	1	1	1	3

Ts (Solar transmittance): Proportion of solar energy transmitted through the fabric. Rs (Solar reflectance): Proportion of solar radiation reflected by the fabric. As (Solar absorptance): Proportion of solar radiation absorbed by the fabric. Tv (Visible light transmittance): Total percentage of light radiation through the fabric over a wavelength of 380 to 780 nm. Rv (visible light reflectance): Total percentage of light radiation reflected by the fabric over a wavelength of 380 to 780 nm. SHGC (Total solar factor): Solar energy which actually penetrates into a room through the blind and glazing. A low value means good thermal performance.

Comfort Classification According to EN14501 : 0. Very little effect 1. Little effect 2. Moderate effect 3. Good effect 4. Very good effect

## Advantage

### B 1%-3%

#### Tight Basket Weave That Combine Visual Comfort With Transparency

- Tight Basket Weave For EXCELLENT CONTROL OF GLARE. Up To 100% Of Light Rays Filtered( $T_v \approx 0\%$ )
- Benefit To Internal Thermal Comfort: Up To 79% Of Solar Energy( $SHGC=0.21$ )

### B 5%-10%

#### Open Basket Weave Design For Optimum Transparency And Control Of Natural Light

- **MAXIMUM TRANSPARENCY:** Excellent Vision To The Outside With Optimal Control Of Incoming Natural Light. Helps To Improve The Energy Efficiency Of Buildings
- Good Glare Control: Up To 93% Of Light Rays ( $T_v = 7\%$ )

- 9 COLORS Available In 2 Widths: 250cm And 300cm
- COORDINATED RANGE WITH A VARIETY OF OPENNESS FACTORS (B 1%, B 3%, B 5% And B 10%) To Optimize Solar Protection In All Applications, Maintaining A Consistent Design Aesthetic
- Excellent MECHANICAL RESISTANCE And Dimensional Stability For Large Roller Blinds
- Health & Safty: Conforms To Standard Requirements For Buildings Open To The Public
- Excellent DIGITAL PRINTING MEDIUM For Custom Designs

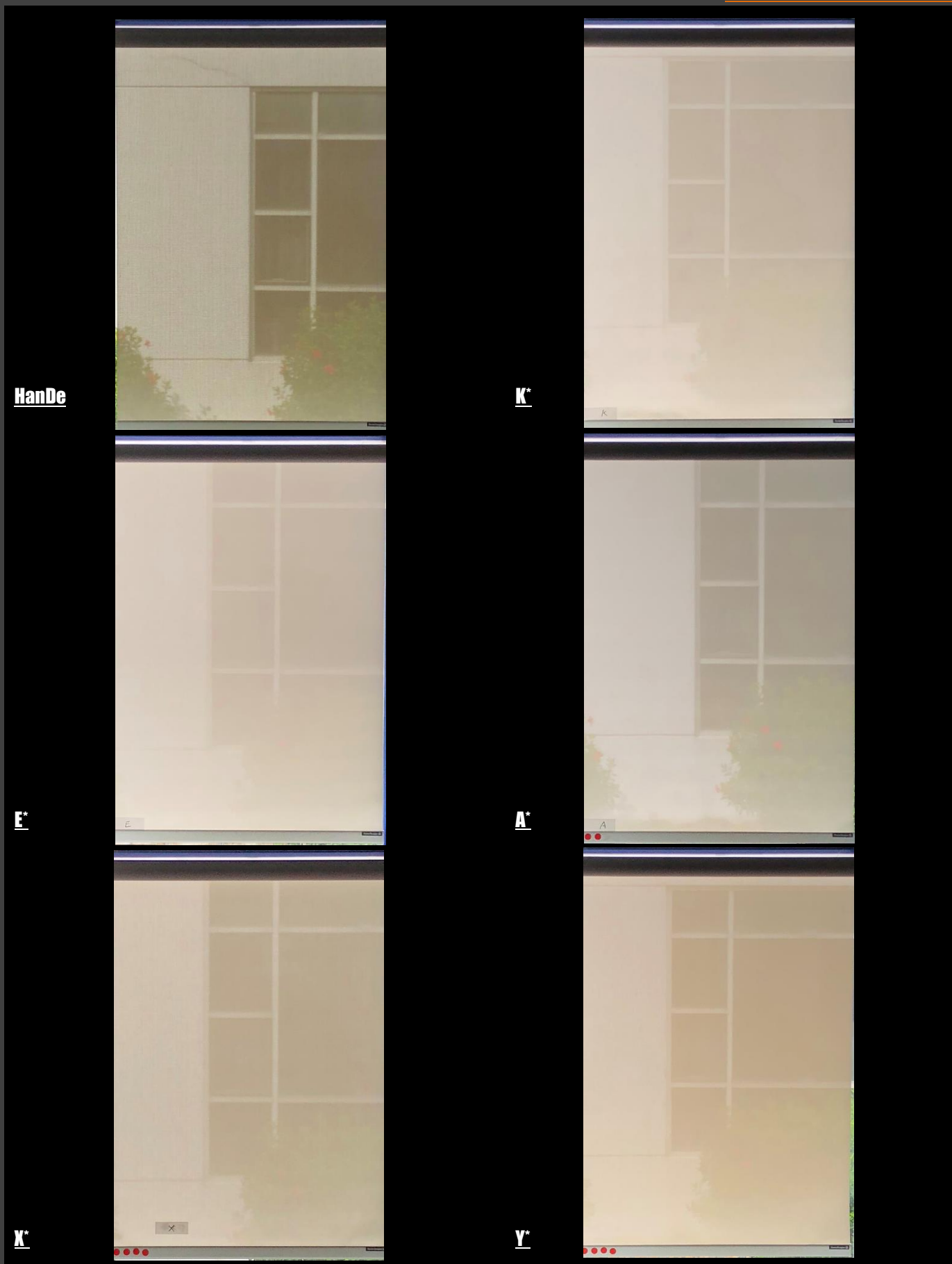
## Solar Fenestration Properties Comparison

**Basket 5% 2X2 White\*White**

Product	Range	Style	Thermal Factors			Optical Factors	SHGC
			Rs (%)	As (%)	Ts (%)	Tv (%)	
<b>HanDe</b>	B5	Basket 5% 2X2 White*White	<b>72</b>	9	19	15	0.32
	NB5*		67	7	26	23	0.33
<b>A*</b>	3000 N		66	14	20	12	0.32
<b>B*</b>	2000		67	11	22	19	0.34
<b>P*</b>	2000		67	13	20	16	0.30
<b>M*</b>	7505		71	9	20	17	0.28

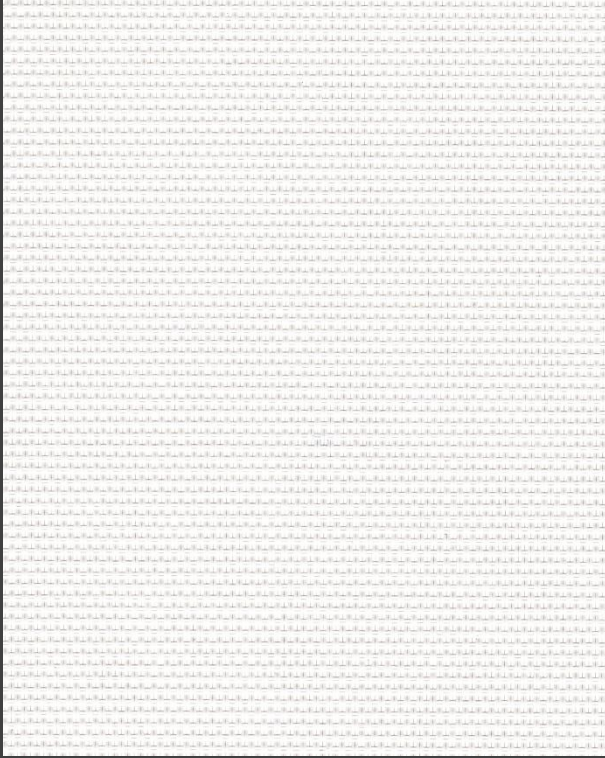
## Transparency Comparison

Basket 5% 2X2 White\*White

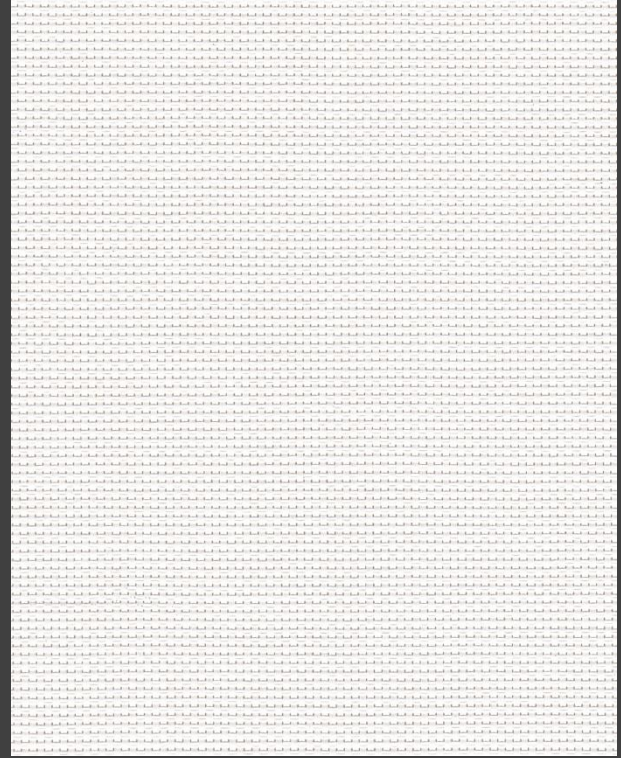


## Openness Factor

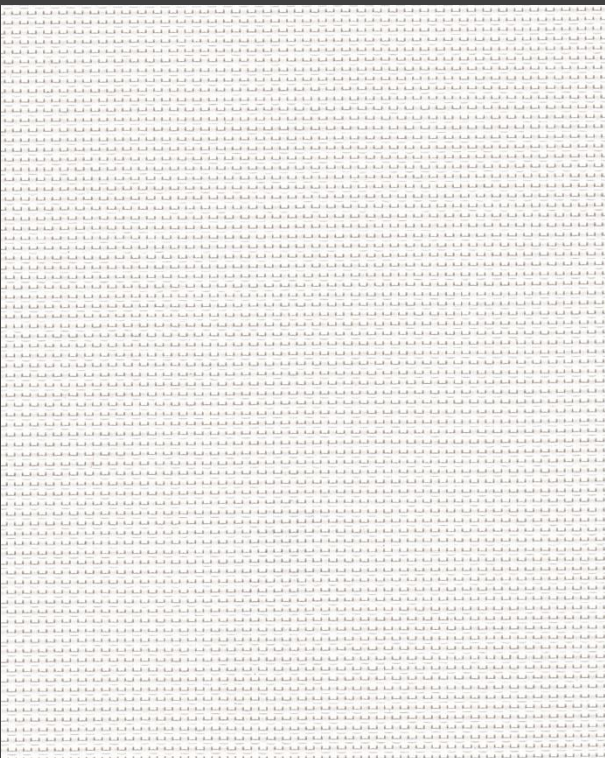
0101 White \* White



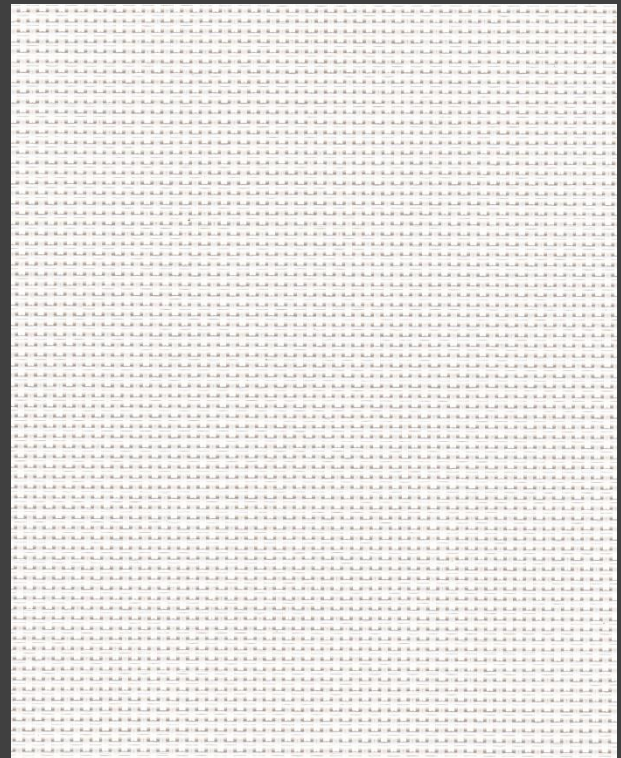
**B 1%**



**B 3%**



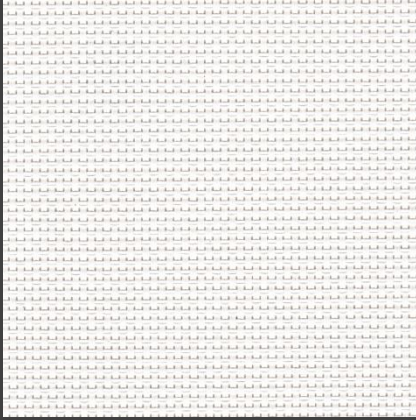
**B 5%**



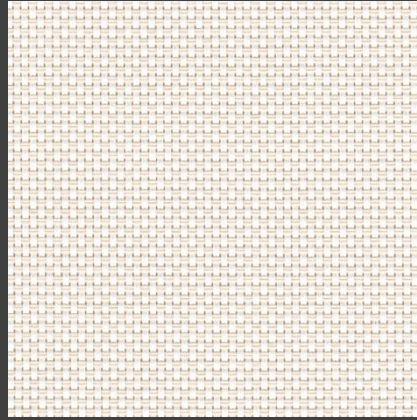
**B 10%**

## Colours

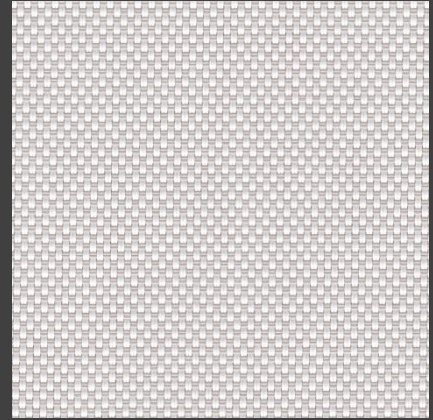
B 5%



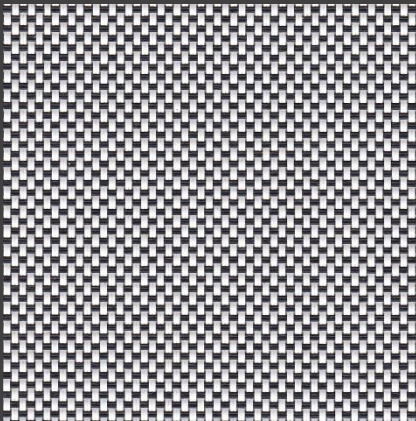
0101 White \* White



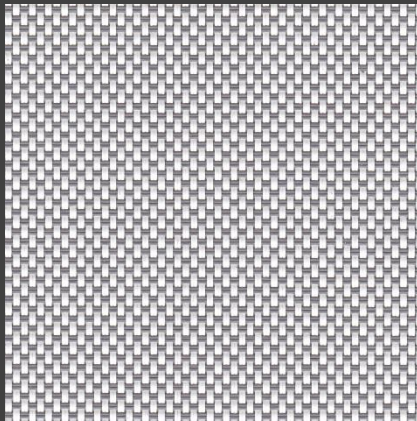
0102 White \* Linen



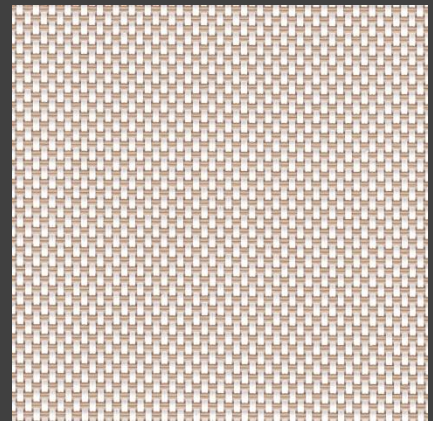
0103 White \* Pearl



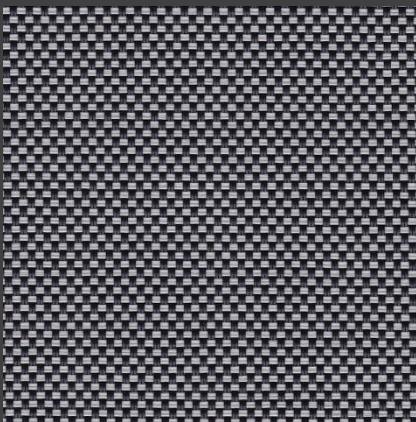
0104 White \* Black



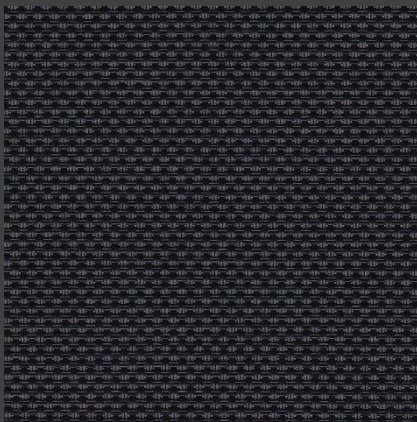
0105 White \* Grey



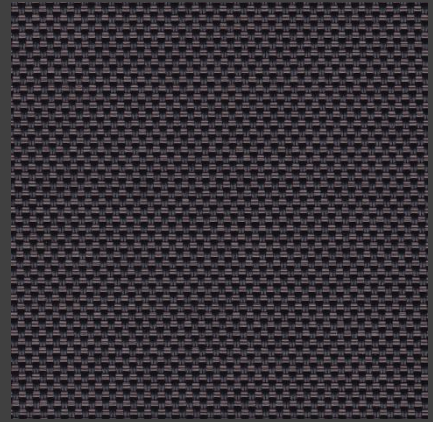
0107 White \* Sand



0403 Black \* Pearl



0404 Black \* Black



0406 Black \* Brown

\* Colours may be slightly different from the actual ones



**HanDe<sup>®</sup>**

**Hande Manufacturing(China)Co.,Ltd**

Add: No.161, Yao TianHe Street,Yong shun Avenue,Yonghe Economic Zone,  
GZ Economic&Technological Development District, Guang zhou, China

Tel: 86-20-3222888 Fax: 86-20-3222205 PostCode: 511356

Mail: info@handegroup.com.cn



[www.handegroup.com.cn](http://www.handegroup.com.cn)