

Nova Basket

NB1 / NB3 / NB5 / NB10



By HanDe

Product Certificate

Fire, Smoke Classification	FR (US) - NFPA 701 TM#1 B1(CN) - GB50222	BS (GB) - 5867 Part2 TypeB
Health & Safety	Oeko-tex Standard 100 class IV RoHS Directive (EU)2015/863 AATCC112-2014	Greenguard® Gold EN71 Part 3:1994 GB18586 - 2001
Bacterial & Fungal Resistance	ASTM G21-09 ASTM E 2180-07 Reduce more than 99.9% of bacteria	
Colour fastness to light	Grade 8 ISO105 B02:2014 ≥4.0 AATCC TM 16.3-2014; Option 3; Xenon Arc Lamp	
Warranty	5 Years	



Technical Data

STYLE		NB1	NB3	NB5	NB10
Composition		25%Polyester 75% PVC	25%Polyester 75% PVC	25%Polyester 75% PVC	25%Polyester 75% PVC
Openness Factor		≈1%	≈3%	≈5%	≈10%
UV Screen		Up to 99%	Up to 97%	Up to 94%	Up to 89%
Width	inch	79"-98"-118"	79"-98"-118"	79"-98"-118"	79"-98"-118"
	cm	200-250-300	200-250-300	200-250-300	200-250-300
Weight	oz/yd ²	14.17±5%	13.67 ± 5%	12.35 ± 5%	11.17±5%
(ISO 2286-2)	g/m ²	482 ± 5%	465 ± 5%	420 ± 5%	380 ± 5%
Thickness	inch	0.028 ± 5%	0.026 ± 5%	0.024 ± 5%	0.023 ± 5%
(ISO 2286-3)	mm	0.72 ± 5%	0.65 ± 5%	0.62 ± 5%	0.58 ± 5%
Mechanical	Resistance				
Breaking	Warp	≥1900 N/5cm	≥1850 N/5cm	≥1550 N/5cm	≥1400 N/5cm
(ISO 13934-1)	Weft	≥1200 N/5cm	≥1400 N/5cm	≥1400 N/5cm	≥1300 N/5cm
Tear	Warp	≥110 N	≥135 N	≥125 N	≥128 N
(ISO 4674)	Weft	≥ 90 N	≥105 N	≥110 N	≥120 N
Packing		32.8 yards	32.8 yards	32.8 yards	32.8 yards
(Roll Length)		30 lm	30 lm	30 lm	30 lm

Thermal and Optical Factors

Color	Fabric Properties					Fabric & Glass	
	Thermal			Optical		SHGC % Improvement	SHGC
	Ts	Rs	As	Rv	Tv		

Recommended Comfort Classification				
Thermal Control	Visual			
	Daylight Utilization	Glare Control	Night Privacy	Outward Visibility

Nova Basket 1%

0101 White*White	16	72	12	74	13	56%	0.21
0102 White*Linen	17	65	18	68	13	53%	0.23
0103 White*Pearl	17	60	23	62	14	47%	0.24
0105 White*Grey	8	45	47	50	5	40%	0.25
0107 White*Sand	12	55	33	59	8	46%	0.23
0403 Black*Pearl	0	11	89	12	0	18%	0.34
0404 Black*Black	0	3	97	3	0	13%	0.36
0405 Black*Grey	0	8	92	8	0	16%	0.35
0406 Black*Brown	1	5	94	5	1	14%	0.35

2	2	1	2	1
2	2	1	2	1
2	2	1	2	1
2	1	2	2	1
2	1	2	2	1
2	0	3	3	1
1	0	3	3	1
1	0	3	3	1
1	0	3	3	1

Nova Basket 3%

0101 White*White	18	70	12	72	15	54%	0.23
0102 White*Linen	15	59	26	63	11	48%	0.24
0103 White*Pearl	14	52	34	57	11	44%	0.25
0105 White*Grey	9	40	51	44	7	36%	0.27
0107 White*Sand	14	51	35	54	10	42%	0.26
0403 Black*Pearl	4	13	83	15	4	19%	0.34
0404 Black*Black	3	3	94	3	3	13%	0.37
0405 Black*Grey	3	9	88	10	3	16%	0.35
0406 Black*Brown	3	6	91	6	3	14%	0.36

2	2	1	2	1
2	2	1	2	1
2	2	1	2	1
2	1	1	2	1
2	1	1	2	1
2	1	3	2	2
1	1	3	2	2
1	1	3	2	2
1	1	3	2	2

Nova Basket 5%

0101 White*White	21	67	12	69	17	51%	0.25
0102 White*Linen	18	56	26	60	14	46%	0.25
0103 White*Pearl	16	49	35	54	13	41%	0.27
0105 White*Grey	12	38	50	40	9	33%	0.30
0107 White*Sand	14	46	40	50	12	40%	0.28
0403 Black*Pearl	8	15	77	17	8	19%	0.35
0404 Black*Black	6	3	91	3	3	11%	0.37
0405 Black*Grey	7	3	90	3	7	12%	0.38
0406 Black*Brown	7	6	87	6	7	14%	0.38

2	2	0	1	1
2	2	0	1	1
2	2	0	1	2
2	1	0	1	2
2	1	0	1	2
1	1	1	1	3
1	1	1	1	3
1	1	1	1	3
1	1	1	1	3

Nova Basket 10%

0101 White*White	21	61	18	60	17	45%	0.26
0102 White*Linen	18	56	26	60	14	45%	0.26
0103 White*Pearl	16	49	35	54	13	41%	0.27
0105 White*Grey	18	36	46	38	15	31%	0.33
0107 White*Sand	18	48	34	23	12	40%	0.30
0403 Black*Pearl	12	17	71	19	10	18%	0.35
0404 Black*Black	10	3	87	3	6	10%	0.37
0405 Black*Grey	11	4	85	5	10	11%	0.38
0406 Black*Brown	11	5	84	8	10	13%	0.38

2	2	0	0	2
2	2	0	1	2
2	2	0	1	2
2	2	0	1	3
2	2	0	1	3
1	1	1	1	3
1	1	1	1	3
1	1	1	1	3
1	1	1	1	3

Ts (Solar transmittance): Proportion of solar energy transmitted through the fabric. Rs (Solar reflectance): Proportion of solar radiation reflected by the fabric. As (Solar absorptance): Proportion of solar radiation absorbed by the fabric. Tv (Visible light transmittance): Total percentage of light radiation through the fabric over a wavelength of 380 to 780 nm. Rv (visible light reflectance): Total percentage of light radiation reflected by the fabric over a wavelength of 380 to 780 nm. SHGC (Total solar factor): Solar energy which actually penetrates into a room through the blind and glazing. A low value means good thermal performance.

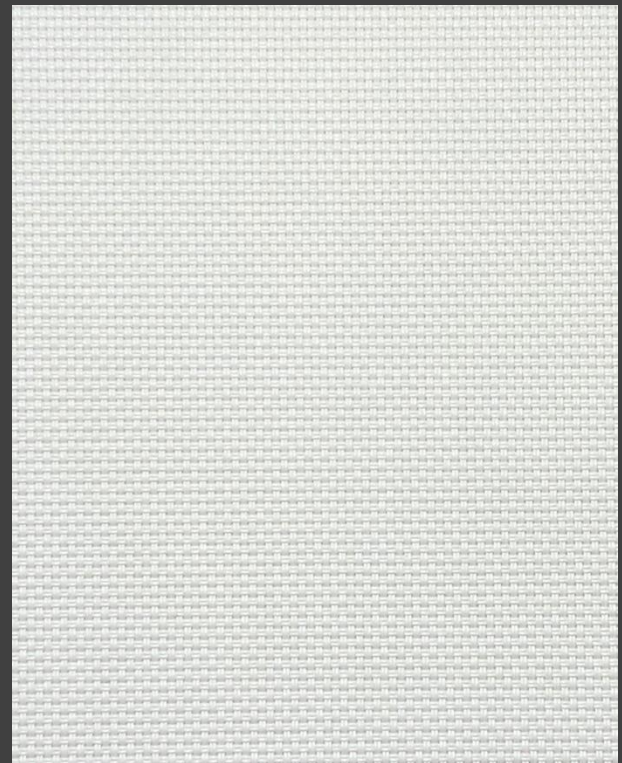
Comfort Classification According to EN14501 : 0. Very little effect 1. Little effect 2. Moderate effect 3. Good effect 4. Very good effect

Openness Factor

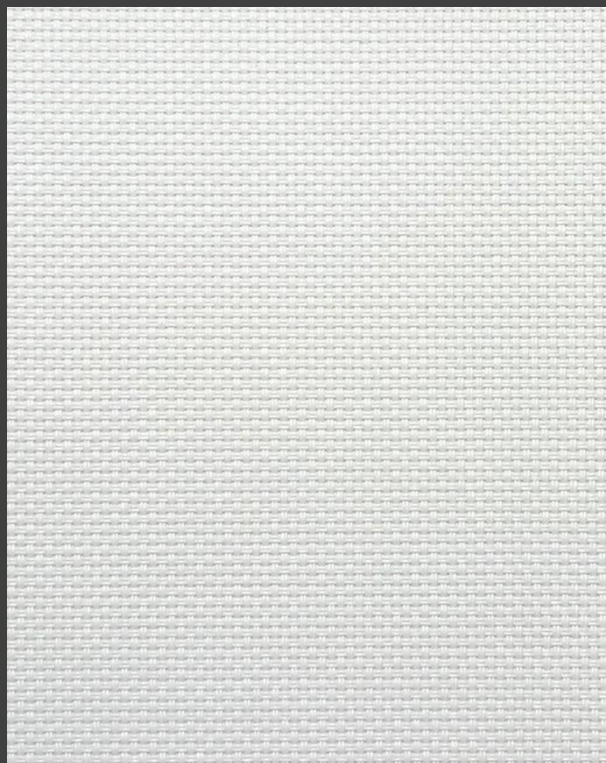
0101 White * White



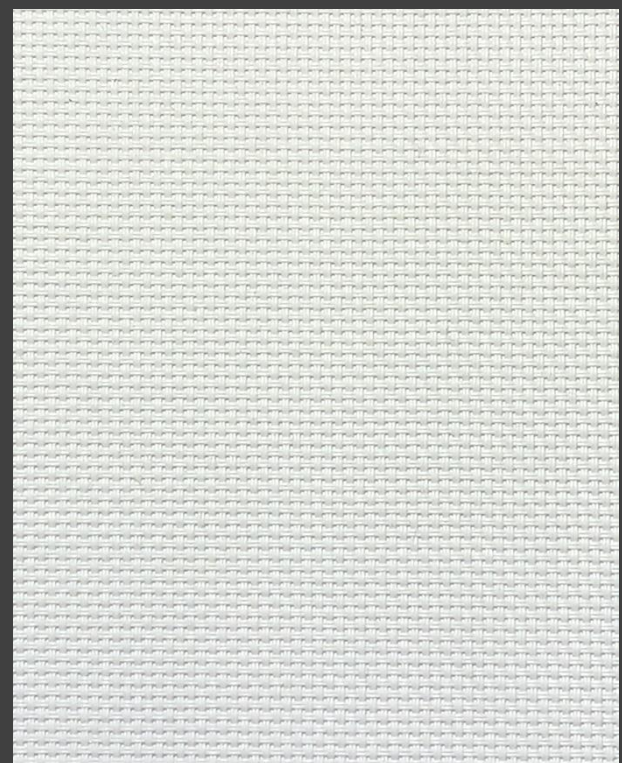
NB 1%



NB 3%



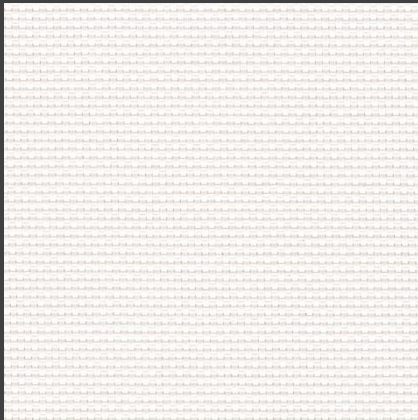
NB 5%



NB 10%

Colors

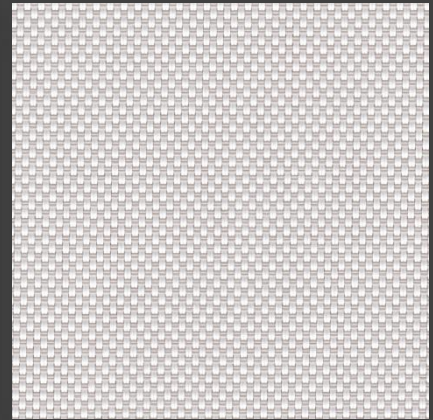
NB 3%



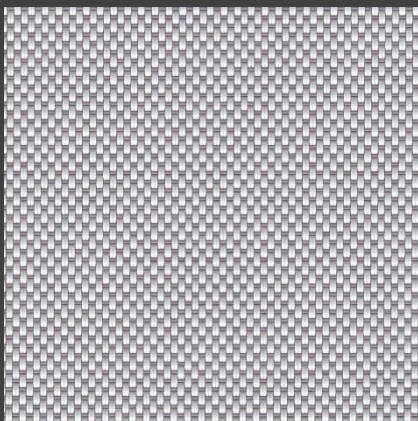
0101 White * White



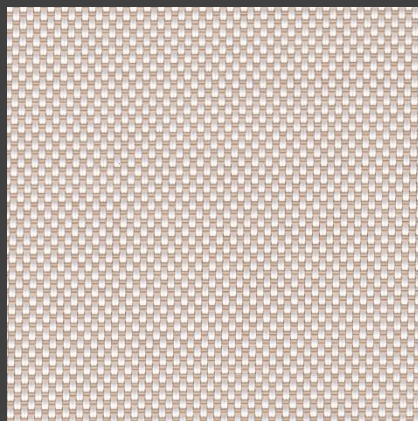
0102 White * Linen



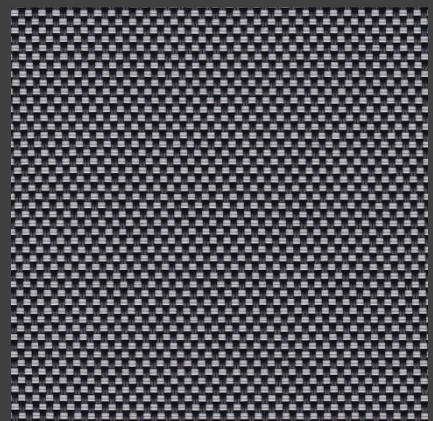
0103 White * Pearl



0105 White * Grey



0107 White * Sand



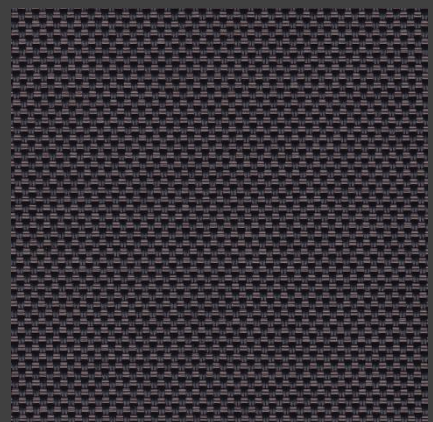
0403 Black * Pearl



0404 Black * Black



0405 Black * Grey



0406 Black * Brown



HanDe[®]

Hande Manufacturing(China)Co.,Ltd

Add: No.161, Yao TianHe Street,Yong shun Avenue,Yonghe Economic Zone,
GZ Economic&Technological Development District, Guang zhou, China

Tel: 86-20-3222888 Fax: 86-20-3222205 PostCode: 511356

Mail: info@handegroup.com.cn



www.handegroup.com.cn